

U.S. ROUTE 1 & 9

- (1) 6 (S)
- (2) 6 (S)
- (3) 7 (S)
- (4) 2 (S)
- (5) 4 (S)

REV. L-26-CJ BY R. WETZEL, HETFIELD AVE. VAC. ORD. NO. 3007

ORD. NO. 3007

ORD. NO. 4164

ORD. NO. 11715

ORD. NO. 4164

ORD. NO. 11715

ORD. NO. 4164

ORD. NO. 11715

ORD. NO. 4164

ORD. NO. 11715

ORD. NO. 4164

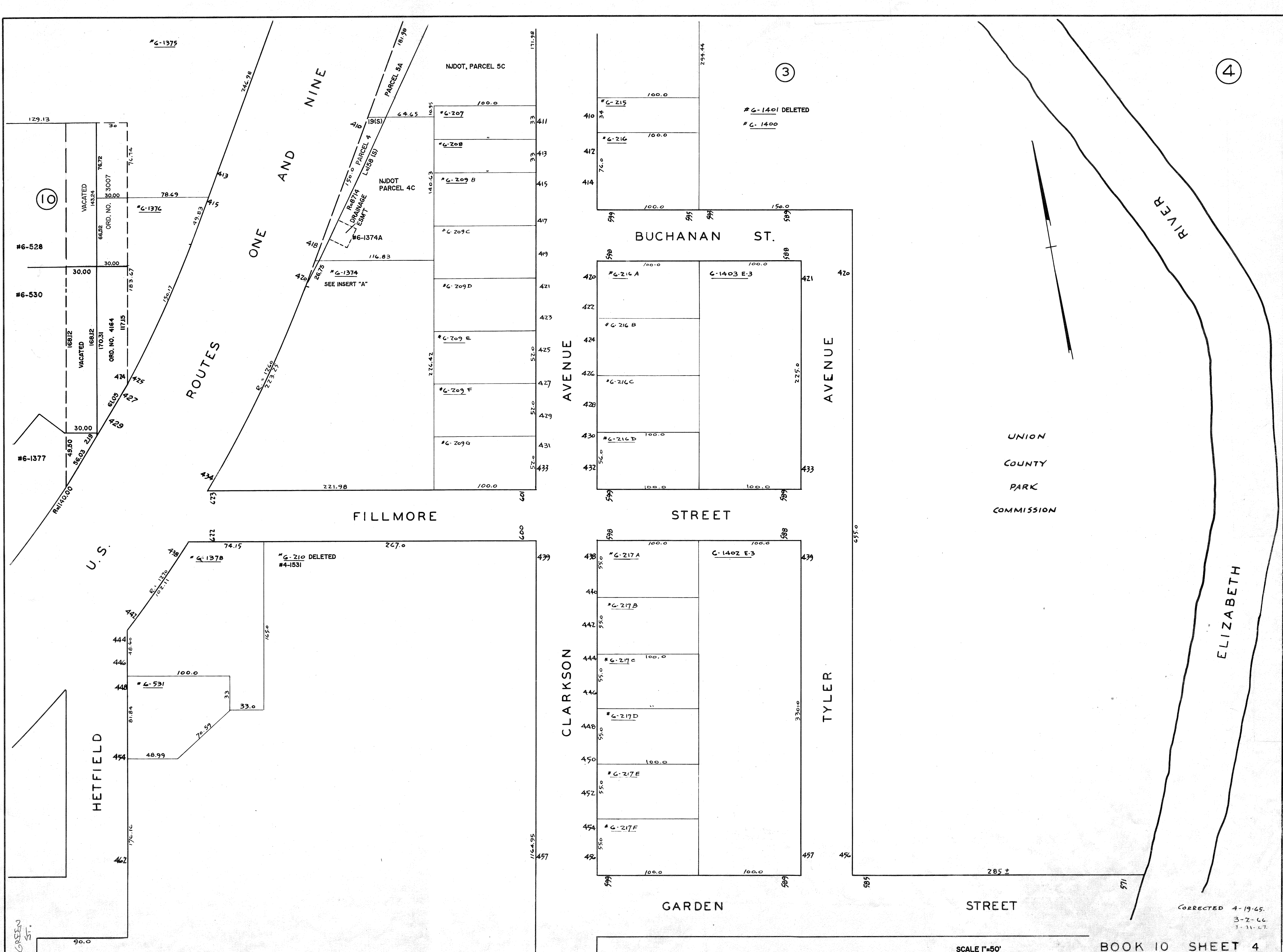
ORD. NO. 11715

ORD. NO. 4164

ORD. NO. 11715

ORD. NO. 4164

ORD. NO. 11715



4

3

10

CORRECTED 4-19-65.
3-2-66.
7-31-67.

SCALE 1"=50'

BOOK 10 SHEET 4