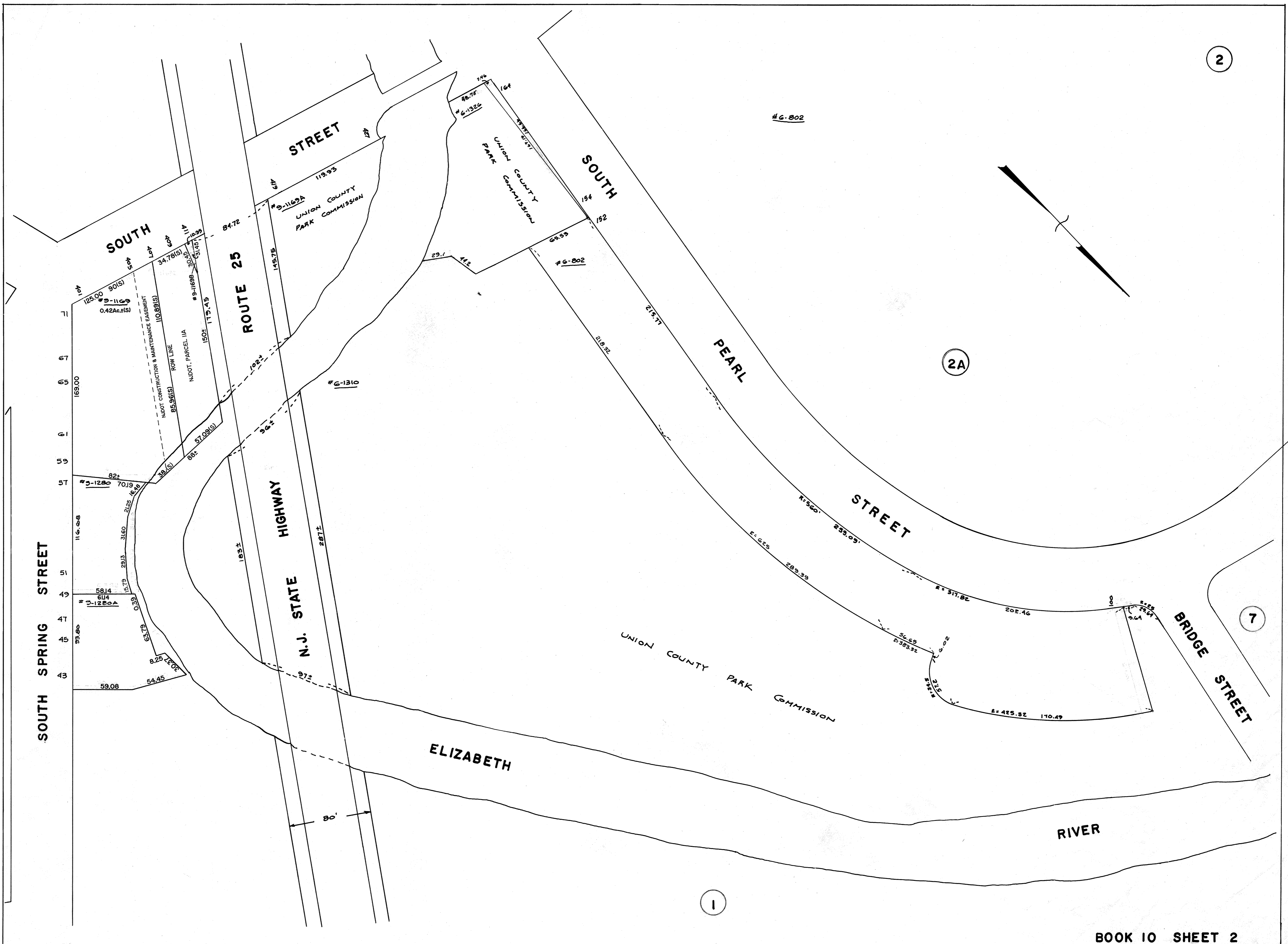


10-01-2002 401-409 SOUTH ST., TAX ACCT. 9-1169, ADDED NOTE NDDOT PARCEL IIA, DOCKET NO. UNH-0455-02, REV. BY S. RINALDI
10-01-2002 43-49 S. SPRING ST., TAX ACCT. 9-1280A, REV. DIMENSIONS PER DB4464 PG0070, REV. BY S. RINALDI GS38944
10-01-2002 51-57 S. SPRING ST., TAX ACCT. 9-1280, REV. DIMENSIONS PER DB5100 PG0304, REV. BY S. RINALDI GS38944

2



2A

7

1