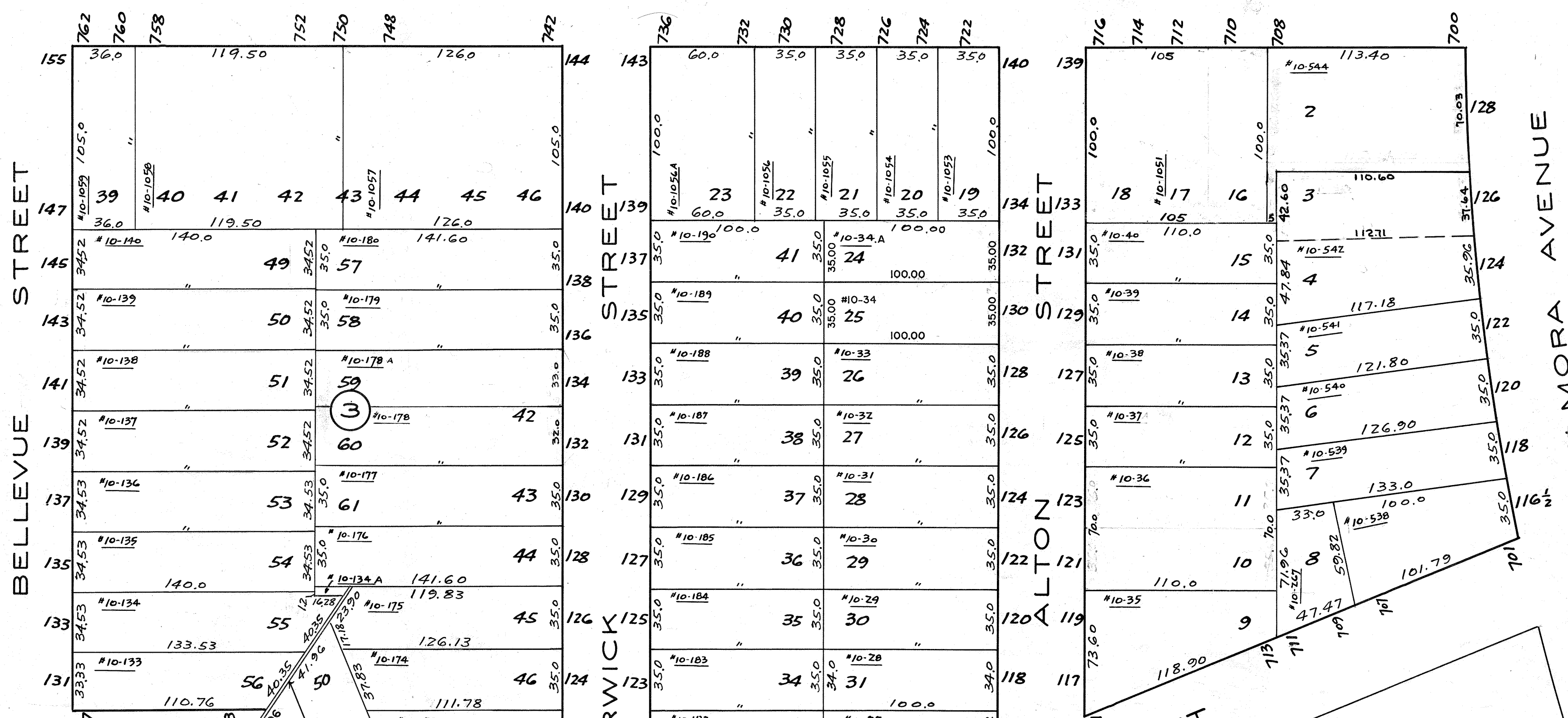


JERSEY AVENUE



29

25

26

CHANCELLOR STREET

STREET

ELMORA AVENUE

CANTON STREET

LINDEN AVENUE

06-25-2004 124-126 ELMORA AVE., ACCT. 10-543 COMBINED WITH 10-542 BY TAX ASSESSOR, REV. BY S. RINALDI 6538944
01-20-2015 751-755 CANTON ST., REV. PER DB3240 P6136 AND DB5738 P6235. BY S. RINALDI

CORRECTED 3-25-65.
3-0-66.
3-30-67.