



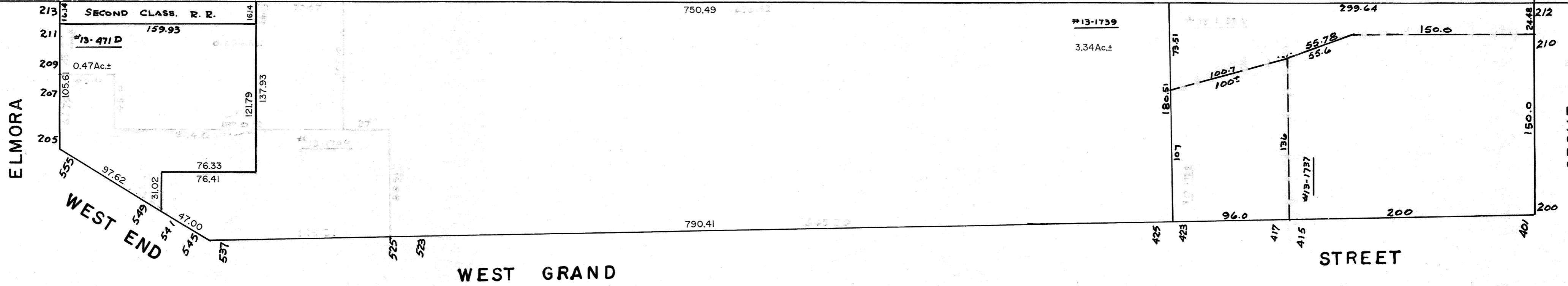
PAGE 31

CENTRAL RAILROAD OF NEW JERSEY

AVE.

ST.

PAGE 13



AVE.

PAGE 8

PAGE 7

SCALE : 1" = 60'

CORRECTED 8-27-73

11-30-1999 ACT. 13-1740 DELETED 13-471D & 13-1739 REVISED DB3366 PG19, REV BY S. RINALDI 6538944  
06-14-2002 401-423 WEST GRAND ST., ACT. 13-1738 & 13-1739A COMBINED BY ASSESSOR INTO 13-1737, REV. BY S. RINALDI