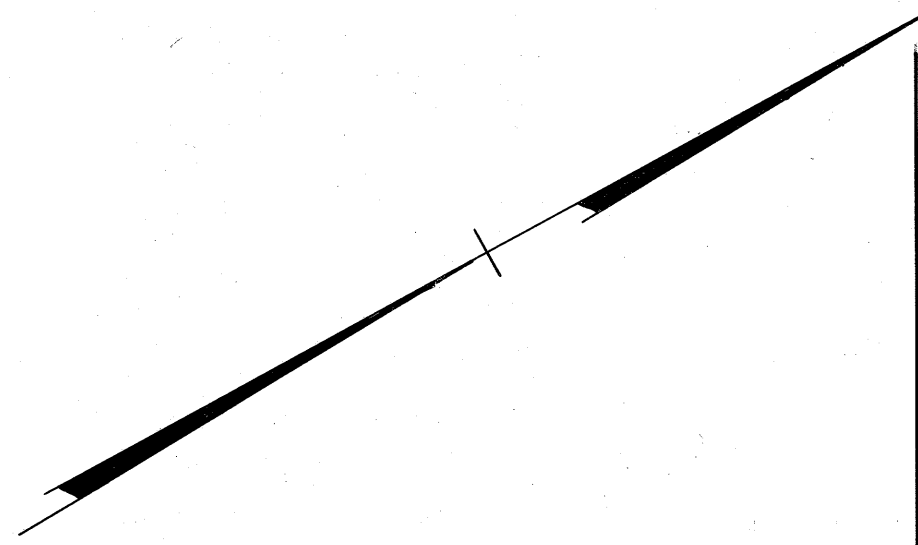
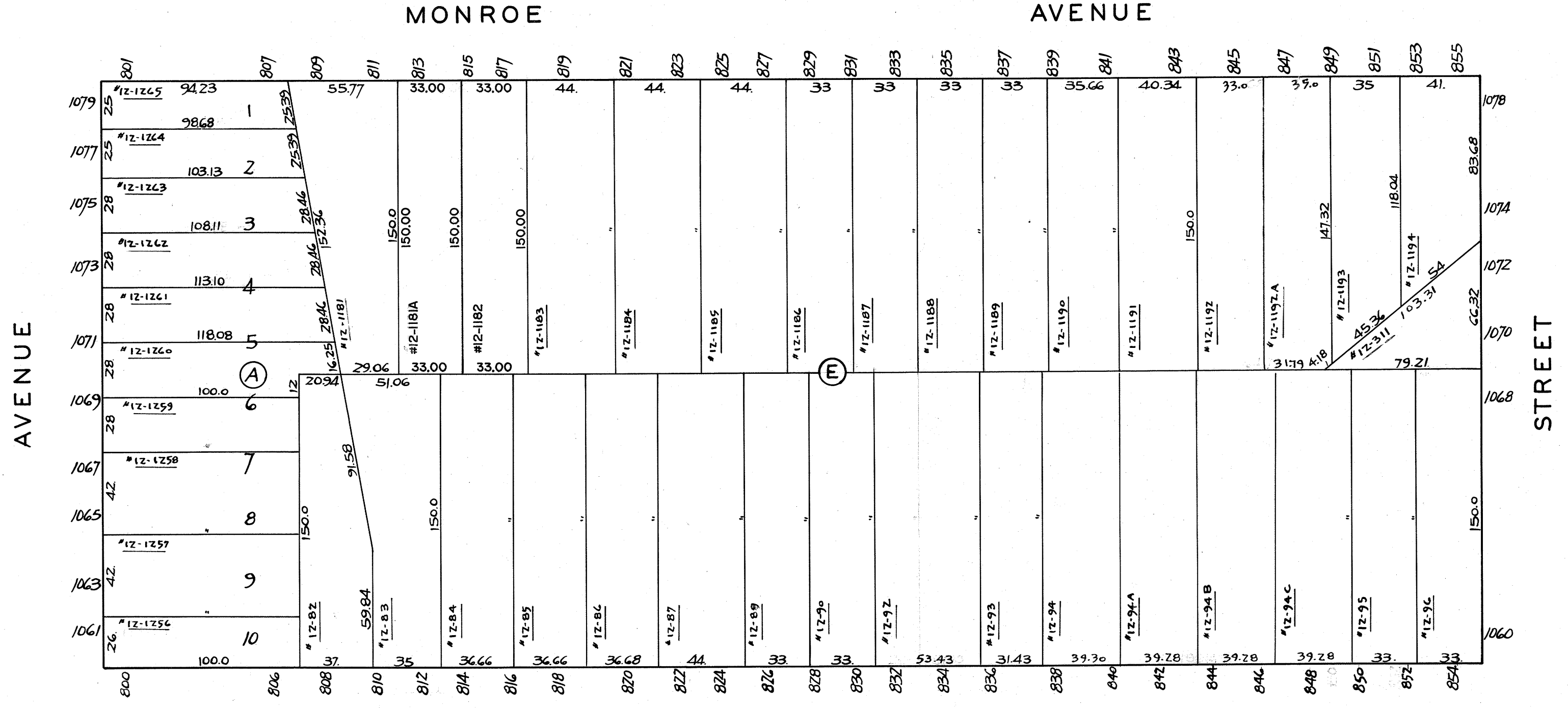


829-835 ADAMS AVE. REV. PER FM185F. REV. BY S. RINALDI. GS38944
12-31-2001 813-817 MONROE AVE., SUB. DBS175 F60156, REV. BY S. RINALDI. GS38944



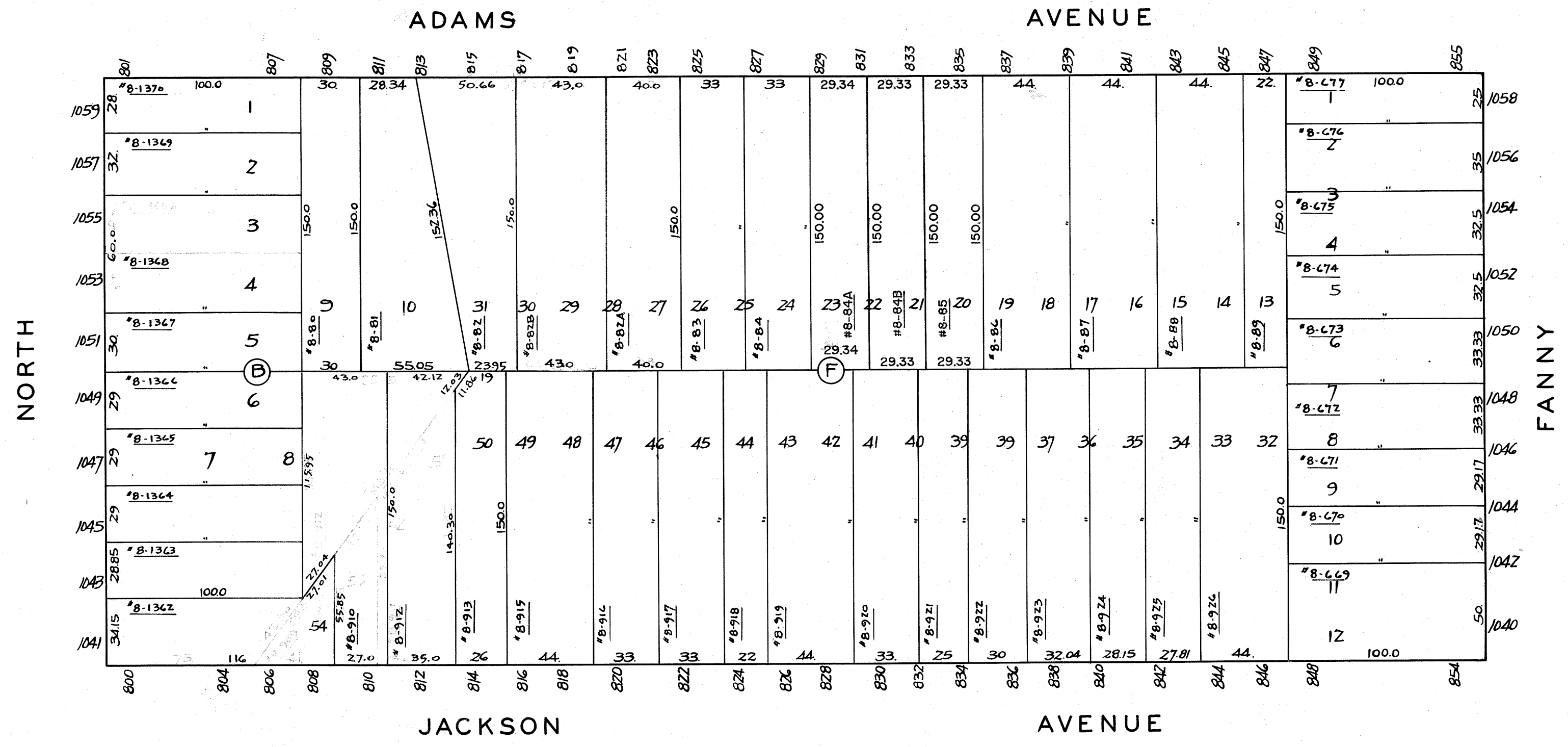
(10)



(8)

(11)

(10)



(3)

(12)

CORRECTED 3-14-65.
3-1-66.
3-23-67.