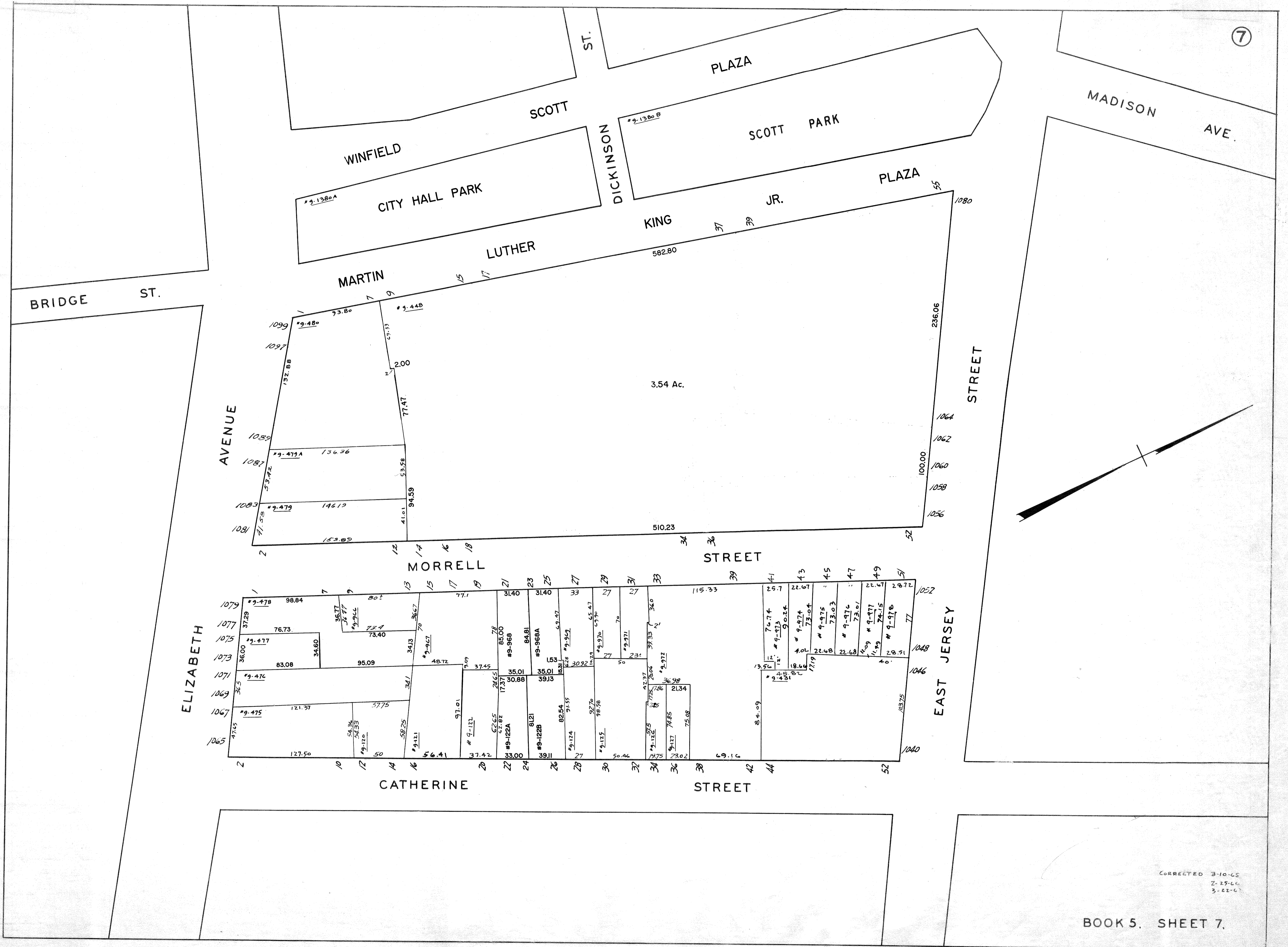


11-04-2002 22-26 CATHERINE ST. & 21-25 MORRELL ST., SUB. FM824C, REV. BY S. RINALDI 05318944  
6-6-2015 9-55 MLK JR. PLAZA, REV. PER DB6060 PG.365, REV. BY S. RINALDI



CORRECTED 3-10-05  
2-25-06  
3-22-06