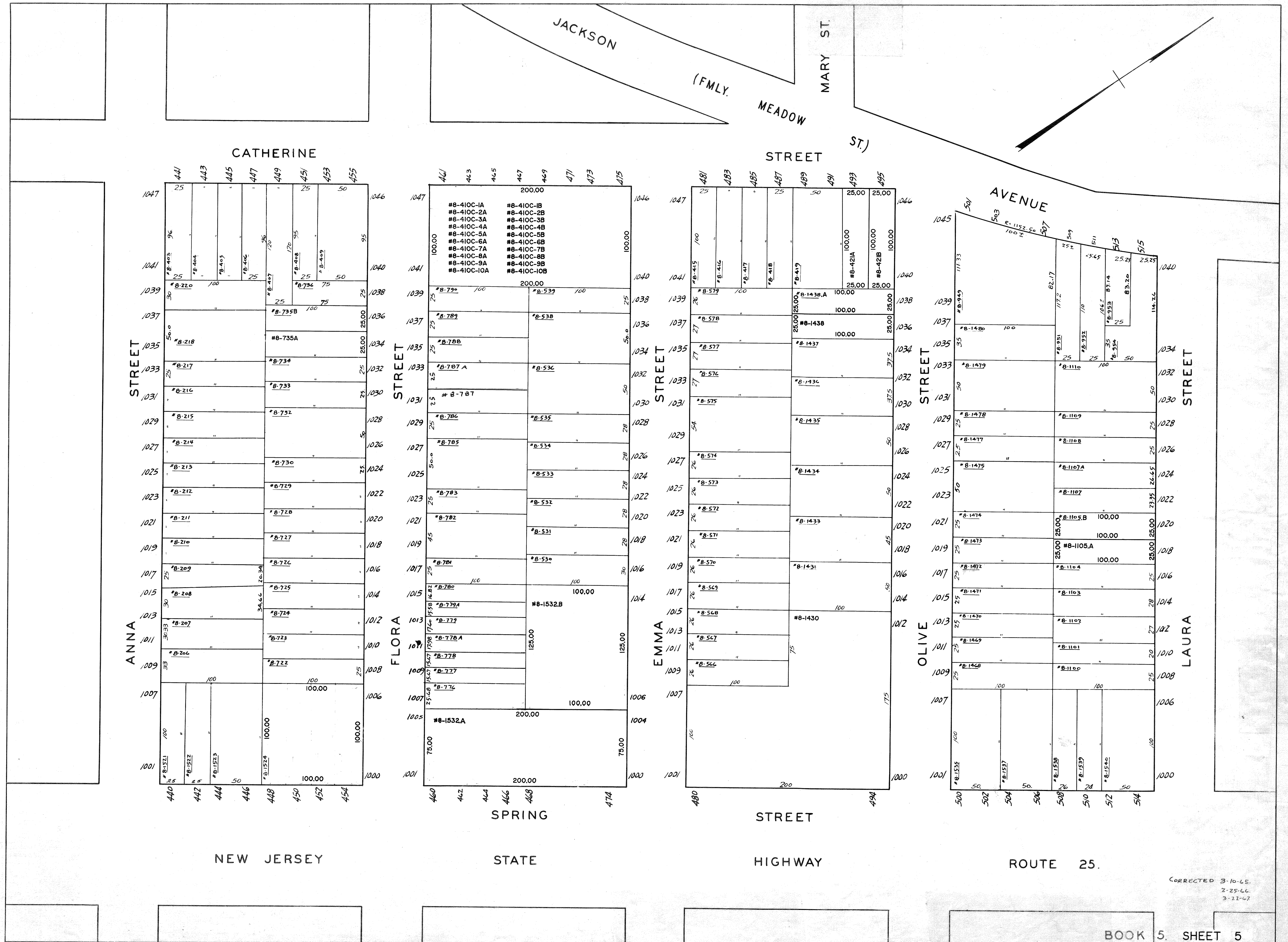


06-26-2000 461-475 CATHERINE ST. ADDED CONDO DB4894 PG0001, REV. BY S. RINALDI 6536944
10.13.2015 448-454 SPRING ST. COMBINED PER DB6079 PG167, REV. BY S. RINALDI



CORRECTED 3-10-65.
2-25-66.
3-22-67