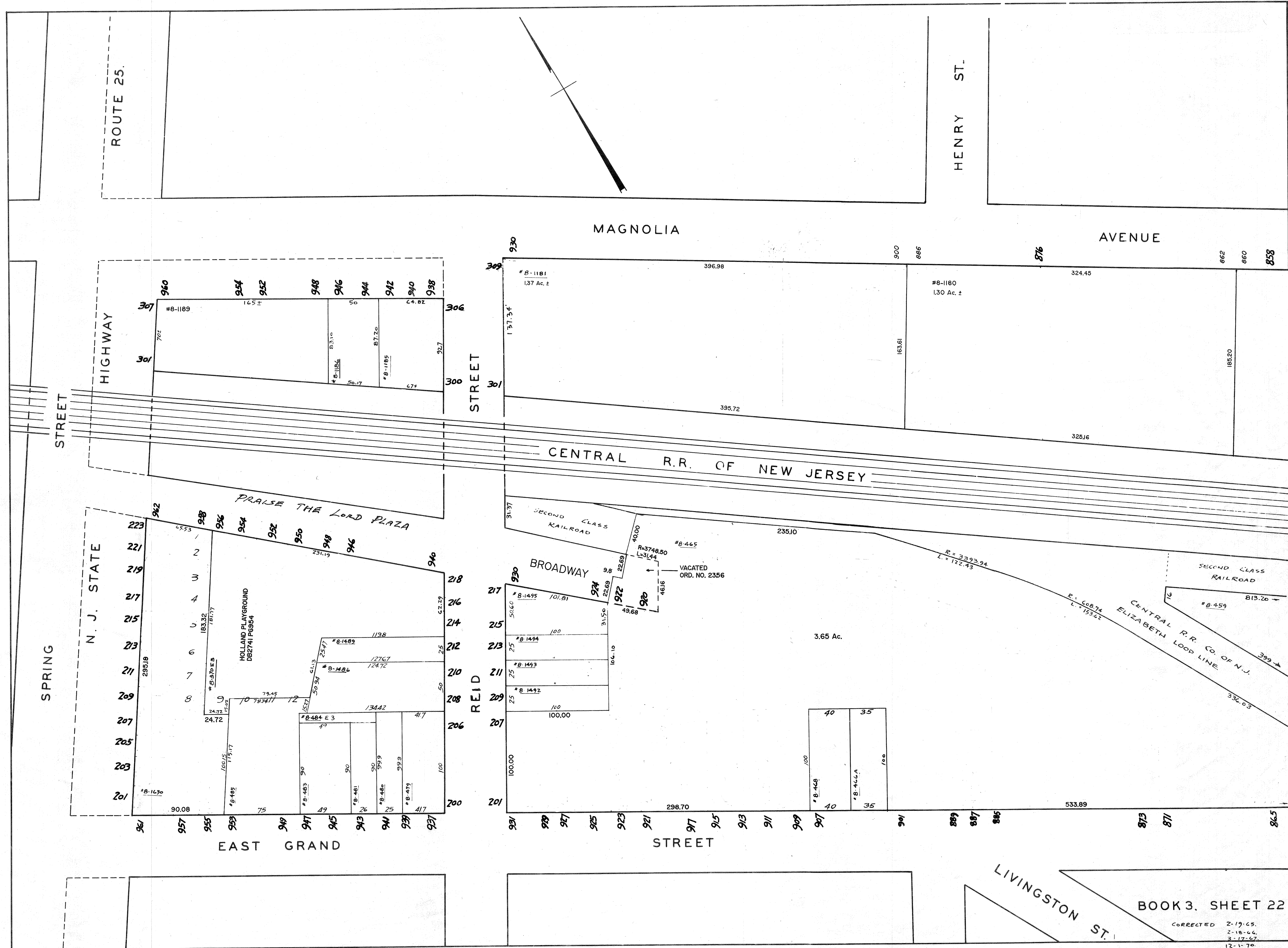


09-20-2000, 865-901 & 909-931 E GRAND ST., REV. PER DB3625 PRO441, REV. BY S. RINALDI G538944
12-12-2017, 862-330 MAGNOLIA AVE. SIB. DB6190 P6700, REV. BY S. RINALDI



BOOK 3, SHEET 22

CORRECTED 2-19-65,
2-18-66,
3-17-67,
12-1-70