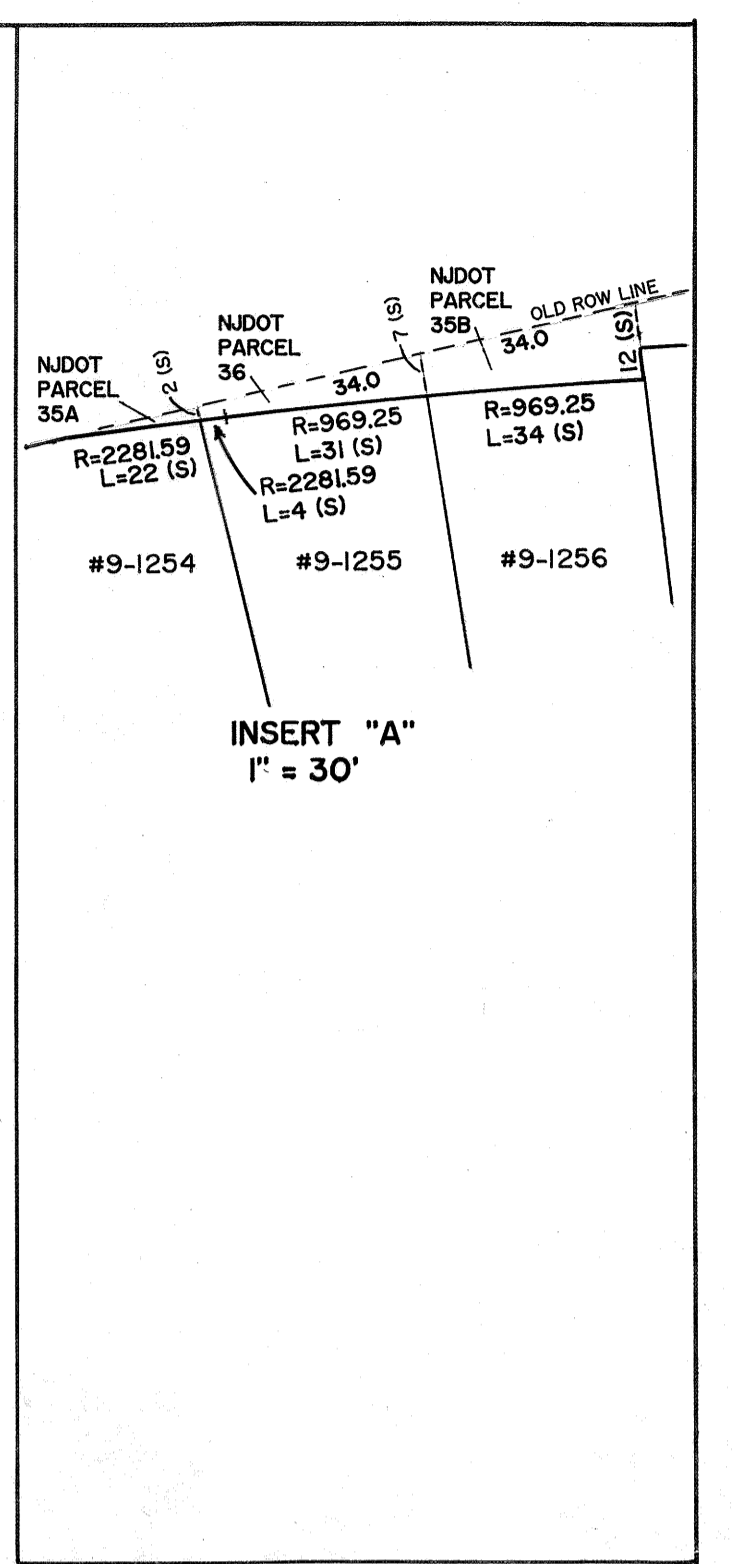


04-17-2000 14-20 JACQUES ST., ADDED ACCT NO'S, REV. BY S. RINALDI, GS38944
 09-04-2001 904-906 E. JERSEY ST., SUBDIVISION, REV. BY S. RINALDI, GS38944
 02-04-2002 9-1 SPRING ST., TAX ACCT. 9-1244, ADDED NOTE NIDOT PARCEL E27A & X289, NOTIFICATION PER NISA 54-4-3.36 (DB5217 P60185)
 02-04-2002 9-1 SPRING ST., TAX ACCT. 9-1244, ADDED NOTE NIDOT PARCEL E27A & X289, NOTIFICATION PER NISA 54-4-3.36 (DB5217 P60185)
 02-04-2002 11-3 SPRING ST., TAX ACCT. 9-1244, ADDED NOTE NIDOT PARCEL E27A & X289, NOTIFICATION PER NISA 54-4-3.36 (DB5217 P60185)
 02-04-2002 15 SPRING ST., TAX ACCT. 9-1247, ADDED NOTE NIDOT PARCEL E27A, NOTIFICATION PER NISA 54-4-3.36 (DB5217 P60185)
 02-04-2002 21 SPRING ST., TAX ACCT. 9-1249, ADDED NOTE NIDOT PARCEL X289 & DARR2, DB5192 P60054
 02-04-2002 17-9 SPRING ST., TAX ACCT. 9-1246, ADDED NOTE NIDOT PARCEL X289 & DARR2, DB5542 P60213
 07-15-2002 29-31 SPRING ST., TAX ACCT. 9-1253A, ADDED NOTE NIDOT PARCEL X338 & DARR3, DB5254 P60049
 07-15-2002 31 SPRING ST., TAX ACCT. 9-1253B, ADDED NOTE NIDOT PARCEL X348 & DARR4, DB5257 P60273
 08-26-2002 23 SPRING ST., TAX ACCT. 9-1250, ADDED NOTE NIDOT PARCEL X289 & E280, DB5209 P60116
 08-26-2002 23 SPRING ST., TAX ACCT. 9-1251, ADDED NOTE NIDOT PARCEL X308 & DARR0, DB5549 P60046
 08-26-2002 23 SPRING ST., TAX ACCT. 9-1252, ADDED NOTE NIDOT PARCEL X308 & DARR0, DB5549 P60046
 08-26-2002 23 SPRING ST., TAX ACCT. 9-1253, ADDED NOTE NIDOT PARCEL X308 & DARR0, DB5549 P60046
 09-03-2002 39-41 SPRING ST., TAX ACCT. 9-1256, ADDED NOTE NIDOT PARCEL X318 & DARR1, NOTIFICATION PER NISA 54-4-3.36
 12-02-2002 27 SPRING ST., TAX ACCT. 9-1255, ADDED NOTE NIDOT PARCEL X318 & DARR1, NOTIFICATION PER NISA 54-4-3.36



Corrected 3-7-65.
 2-18-66.
 3-16-67.
 12-11-70.

BOOK 3. SHEET 14.