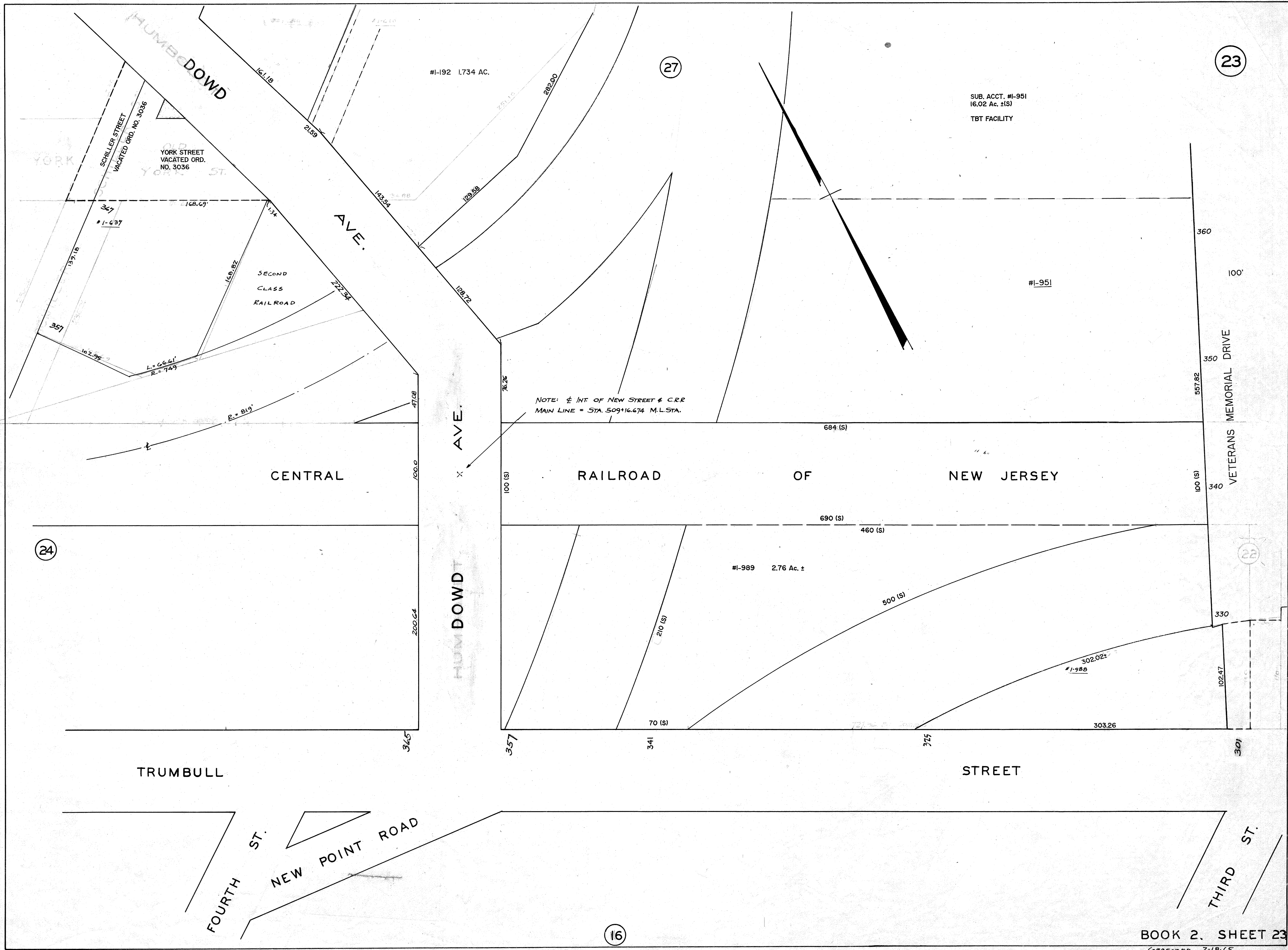


05-12-2000 REV. VACATION YORK & SCHILLER ST., REV. S. RINALDI 6538944  
312016 341 TRUMBULL ST., TAX ACCT. 1-989 ADDED PER TREASURY NOTIFICATION, REV. BY S. RINALDI  
372016 RR PROPERTY REV. PER. TREASURY NOTIFICATION 982011, REV. BY S. RINALDI



#1-192 1.734 AC.

SUB. ACCT. #1-951  
16.02 Ac. ±(S)  
TBT FACILITY

NOTE:  $\frac{1}{2}$  INT. OF NEW STREET & C.R.R.  
MAIN LINE = STA. 509+16.674 M.L. STA.

BOOK 2, SHEET 23

CORRECTED 2-18-65.  
2-17-66  
3-14-67.

23

27

24

16

22