

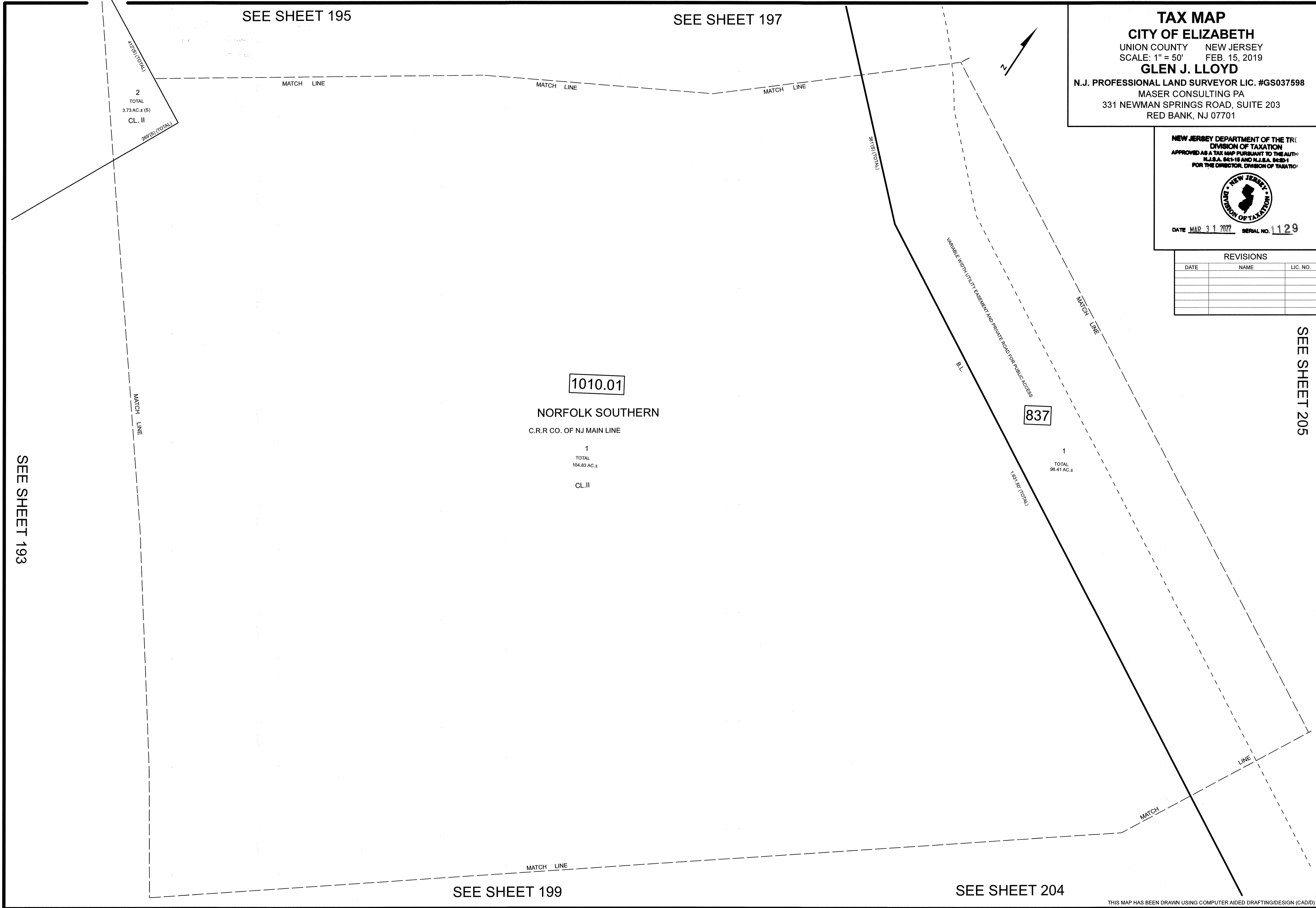
TAX MAP
CITY OF ELIZABETH
 UNION COUNTY NEW JERSEY
 SCALE: 1" = 50' FEB. 15, 2019
GLEN J. LLOYD
 N.J. PROFESSIONAL LAND SURVEYOR LIC. #GS037598
 MASER CONSULTING PA
 331 NEWMAN SPRINGS ROAD, SUITE 203
 RED BANK, NJ 07701

NEW JERSEY DEPARTMENT OF THE TREASURY
 DIVISION OF TAXATION
 APPROVED AS A TAX MAP PURSUANT TO THE AUTHORITY
 GRANTED BY N.J.S.A. 54:1-18 AND N.J.S.A. 54:1-19
 FOR THE DIRECTOR, DIVISION OF TAXATION



DATE MAR 31 2022 SERIAL NO. 1129

REVISIONS		
DATE	NAME	LIC. NO.



2
 TOTAL
 3.73 AC.± (S)
 CL. II

1010.01

NORFOLK SOUTHERN
 C.R.R. CO. OF NJ MAIN LINE

1
 TOTAL
 104.83 AC.±
 CL. II

837

1
 TOTAL
 98.41 AC.±

SEE SHEET 193

SEE SHEET 195

SEE SHEET 197

SEE SHEET 199

SEE SHEET 204

SEE SHEET 205