

REVISIONS		
DATE	NAME	LIC. NO.

SOUTH SECOND STREET

SECOND

SEE SHEET 164

STREET

SEE SHEET 165

BUTLER STREET

STREET

780

3
7.76 AC ± TOTAL

SEE SHEET 178

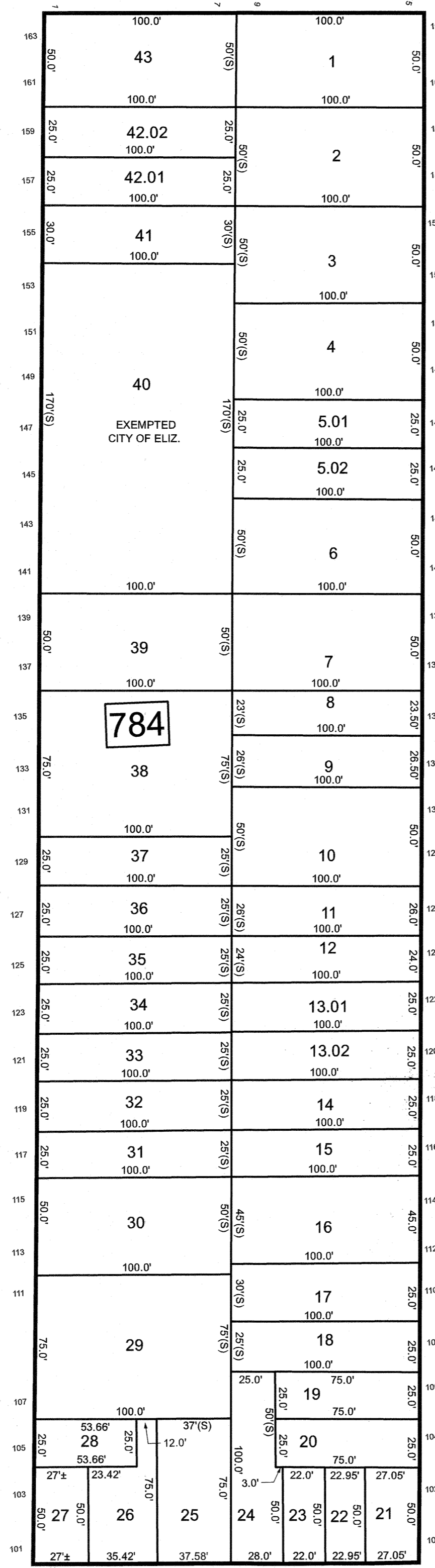
SOUTH FIRST STREET

FIRST

SEE SHEET 180

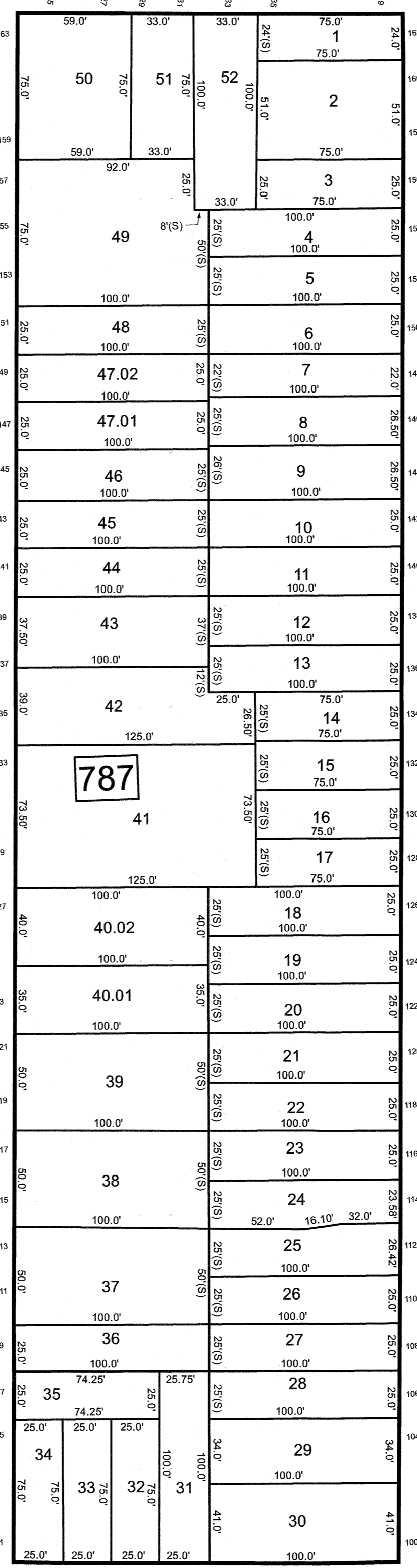
AVENUE

ELIZABETH



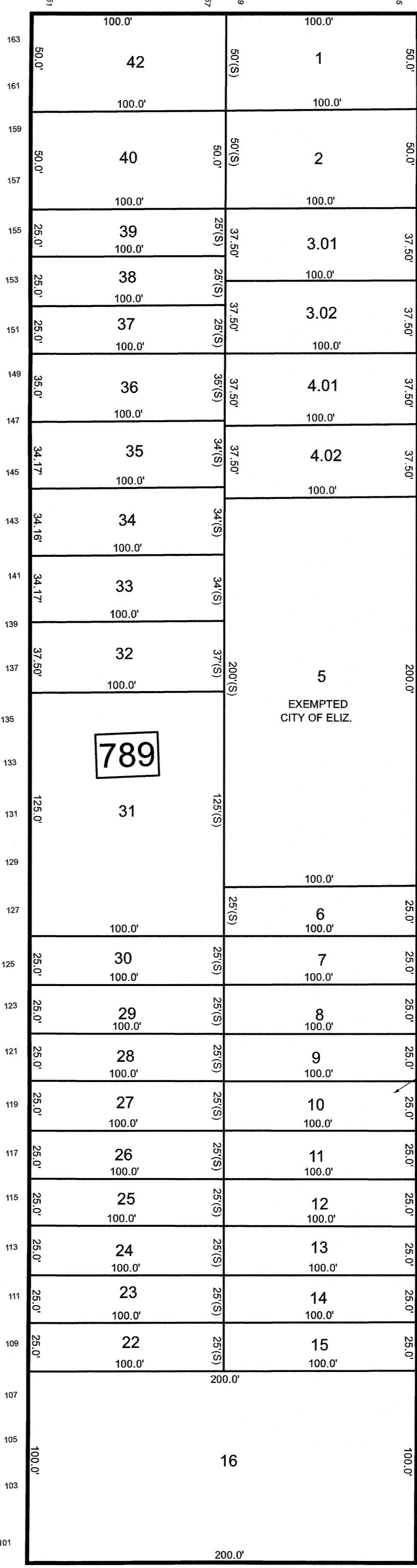
STREET

MARSHALL



STREET

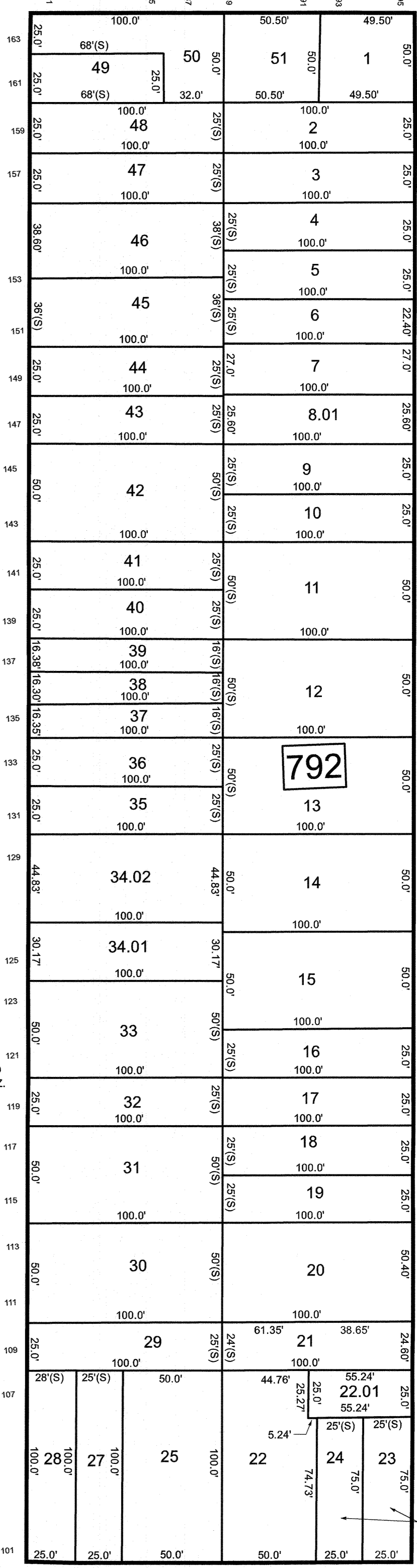
FRANKLIN



STREET

STREET

FULTON



STREET

EAST

SEE SHEET 182

NEW JERSEY

NEW JERSEY DEPARTMENT OF THE TREASURY
DIVISION OF TAXATION
APPROVED AS A TAX MAP PURSUANT TO THE AUTHORITY OF
N.J.S.A. 54:1-16 AND N.J.S.A. 54:26-1
FOR THE DIRECTOR, DIVISION OF TAXATION



DATE MAR 31 2022 SERIAL NO. 1129

TAX MAP
CITY OF ELIZABETH
UNION COUNTY NEW JERSEY
SCALE: 1" = 50' FEB. 15, 2019
GLEN J. LLOYD
N.J. PROFESSIONAL LAND SURVEYOR LIC. #GS037598
MASER CONSULTING PA
331 NEWMAN SPRINGS ROAD, SUITE 203
RED BANK, NJ 07701

THIS MAP HAS BEEN DRAWN USING COMPUTER AIDED DRAFTING/DESIGN (CAD/D)