

REVISIONS		
DATE	NAME	LIC. NO.

SEE SHEET 167

SEE SHEET 166

GENEVA STREET

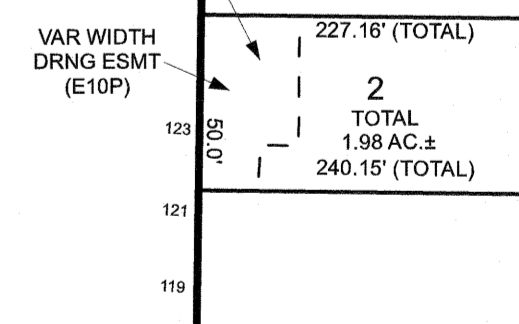
AVENUE

SEE SHEET 165

BUTLER STREET

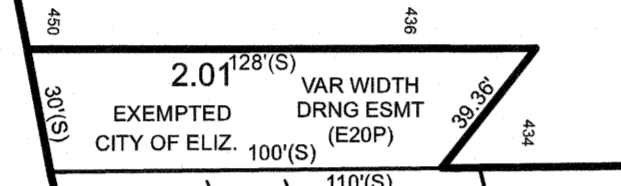
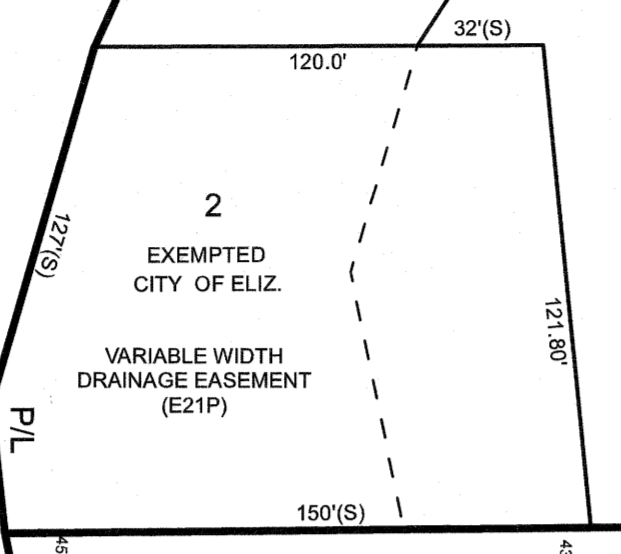
THIRD

780



743

1
24.19 AC.± TOTAL



SOUTH SECOND STREET

771

2
3.30 AC.± TOTAL
EXEMPTED VACANT LAND

40' ELIZABETHTOWN GAS COMPANY EASEMENT

4
9.10 AC.± TOTAL

1
3.0 AC.± TOTAL
EXEMPTED CITY OF ELIZ.
VARIABLE WIDTH DRAINAGE EASEMENT (E19P)

3
2.15 AC.± TOTAL

744

2
28.40 AC.± TOTAL
EXEMPTED JOINT MEETING OF MUNICIPALITIES

3
2.54 AC.± TOTAL
EXEMPTED JOINT MEETING OF MUNICIPALITIES

SEE SHEET 175

SEE SHEET 177

NEW JERSEY DEPARTMENT OF THE TREASURY
DIVISION OF TAXATION
APPROVED AS A TAX MAP PURSUANT TO THE AUTHORITY OF
N.J.S.A. 54:1-16 AND N.J.S.A. 54:5D-1
FOR THE DIRECTOR, DIVISION OF TAXATION



DATE MAR 31 2022 SERIAL NO. 1129

TAX MAP
CITY OF ELIZABETH
UNION COUNTY NEW JERSEY
SCALE: 1" = 50' FEB. 15, 2019
GLEN J. LLOYD
N.J. PROFESSIONAL LAND SURVEYOR LIC. #GS037598
MASER CONSULTING PA
331 NEWMAN SPRINGS ROAD, SUITE 203
RED BANK, NJ 07701

THIS MAP HAS BEEN DRAWN USING COMPUTER AIDED DRAFTING/DESIGN (CADD)