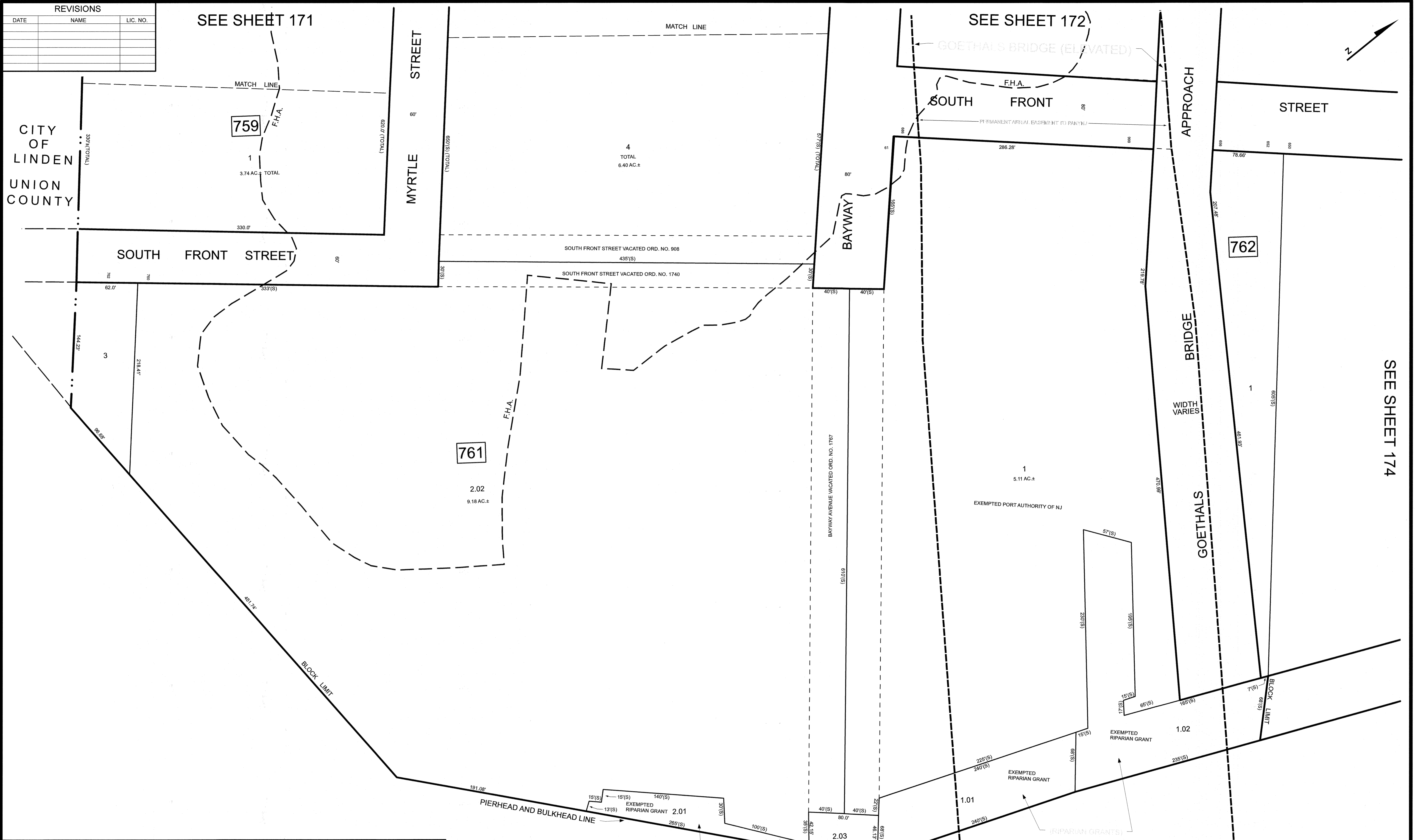



REVISIONS		
DATE	NAME	LIC. NO.



TAX MAP
CITY OF ELIZABETH
 UNION COUNTY NEW JERSEY
 SCALE: 1" = 50' FEB. 15, 2019
GLEN J. LLOYD
 N.J. PROFESSIONAL LAND SURVEYOR LIC. #GS037598
 MASER CONSULTING PA
 331 NEWMAN SPRINGS ROAD, SUITE 203
 RED BANK, NJ 07701

NEW JERSEY DEPARTMENT OF THE TREASURY
 DIVISION OF TAXATION
 APPROVED AS A TAX MAP PURSUANT TO THE AUTHORITY OF
 N.J.S.A. §61-16 AND N.J.S.A. §62D-1
 FOR THE DIRECTOR, DIVISION OF TAXATION



DATE **MAR 31 2022** SERIAL NO. **1129**

ARTHUR KILL

GOETHALS BRIDGE (ELEVATED)

GOETHALS BRIDGE (ELEVATED)

SEE SHEET 171

SEE SHEET 172

SEE SHEET 174

THIS MAP HAS BEEN DRAWN USING COMPUTER AIDED DRAFTING/DESIGN (CAD/D)