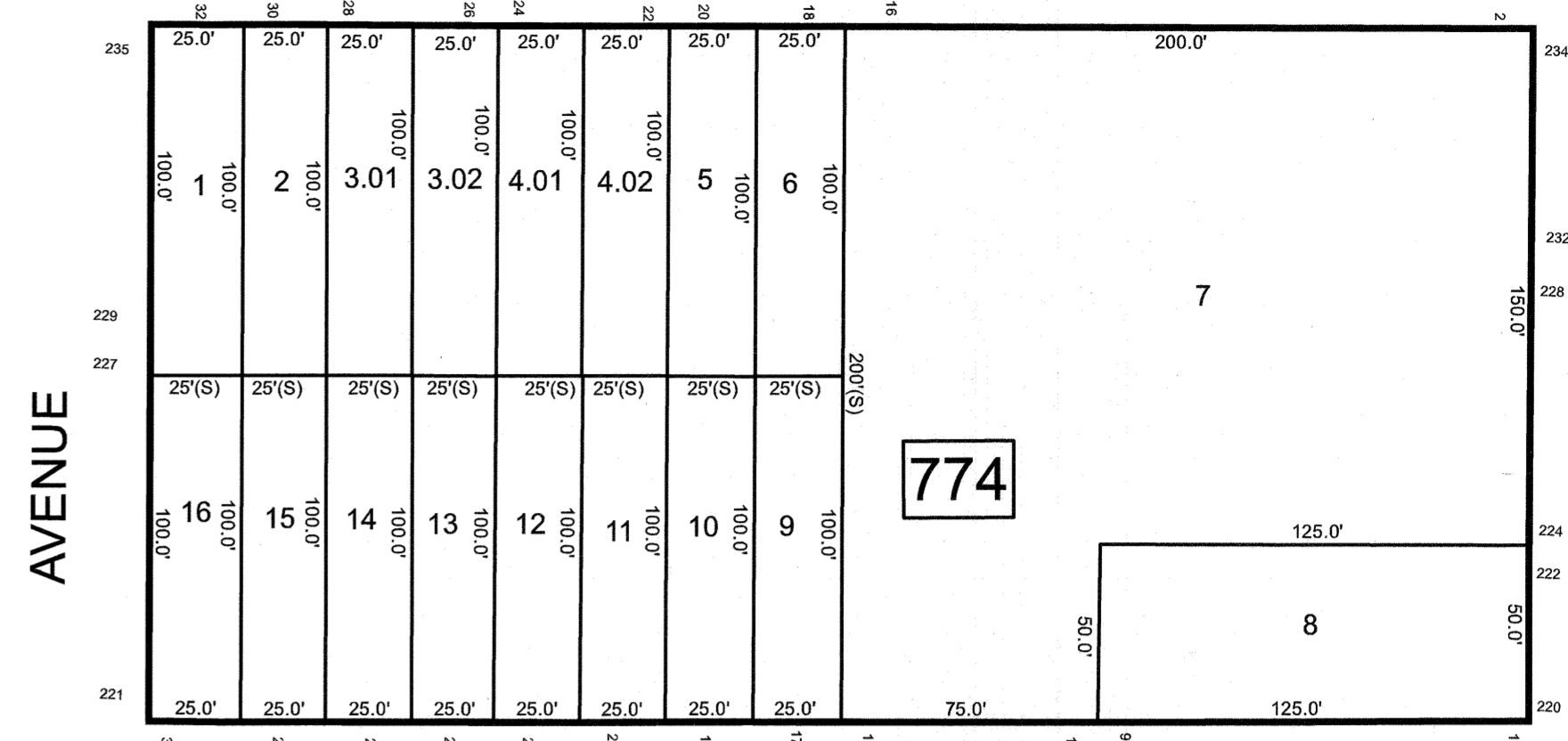
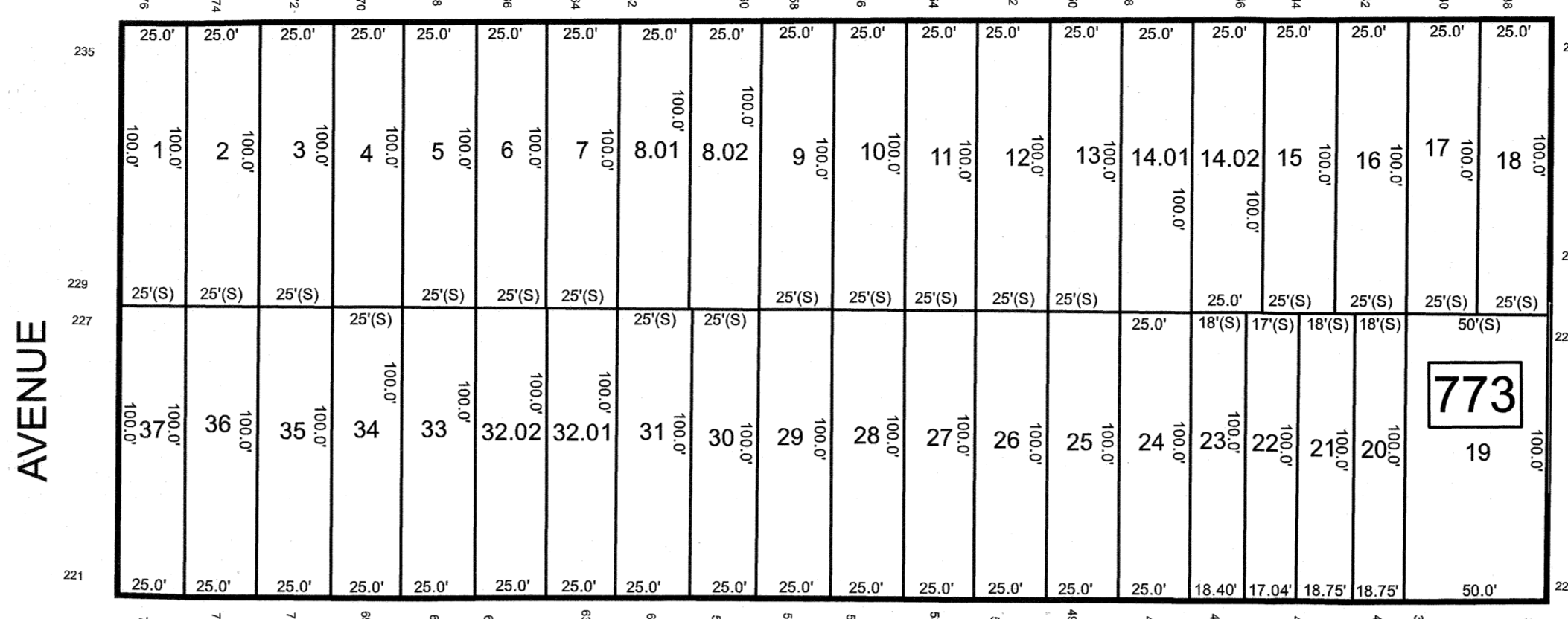
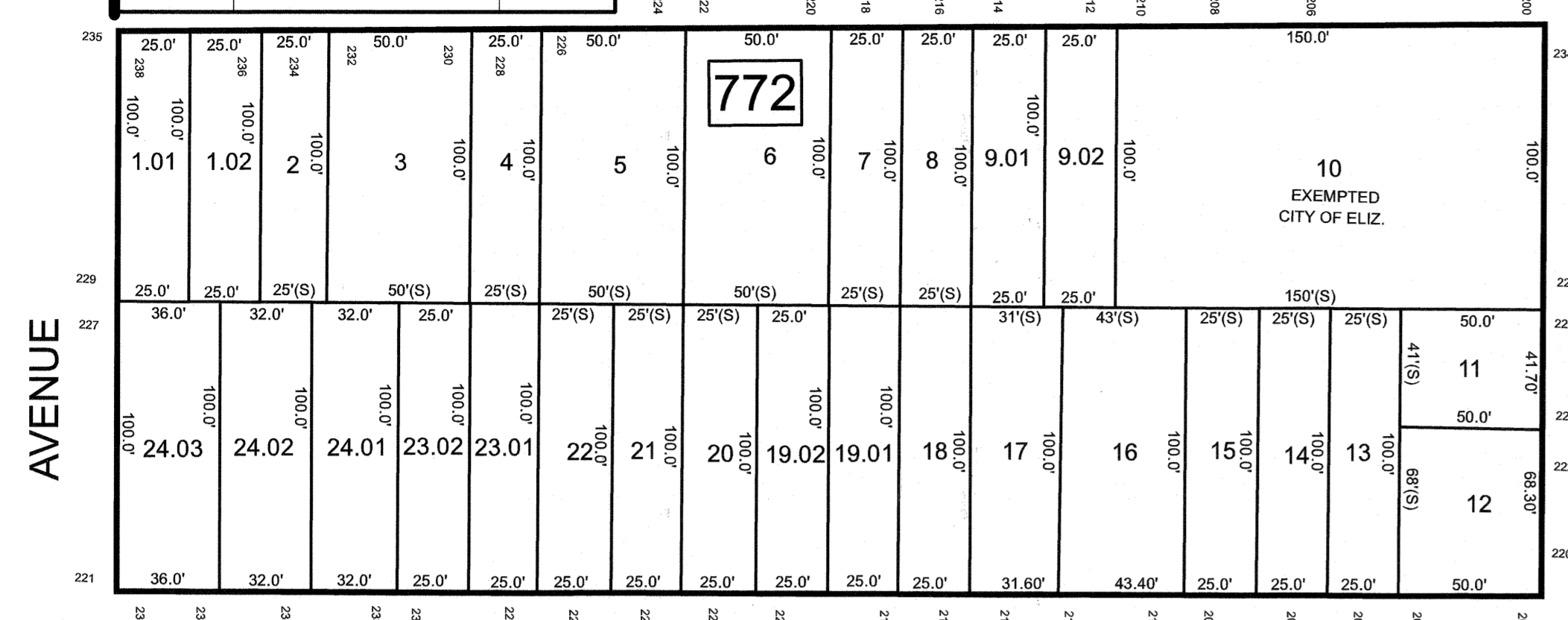


REVISIONS		
DATE	NAME	LIC. NO.

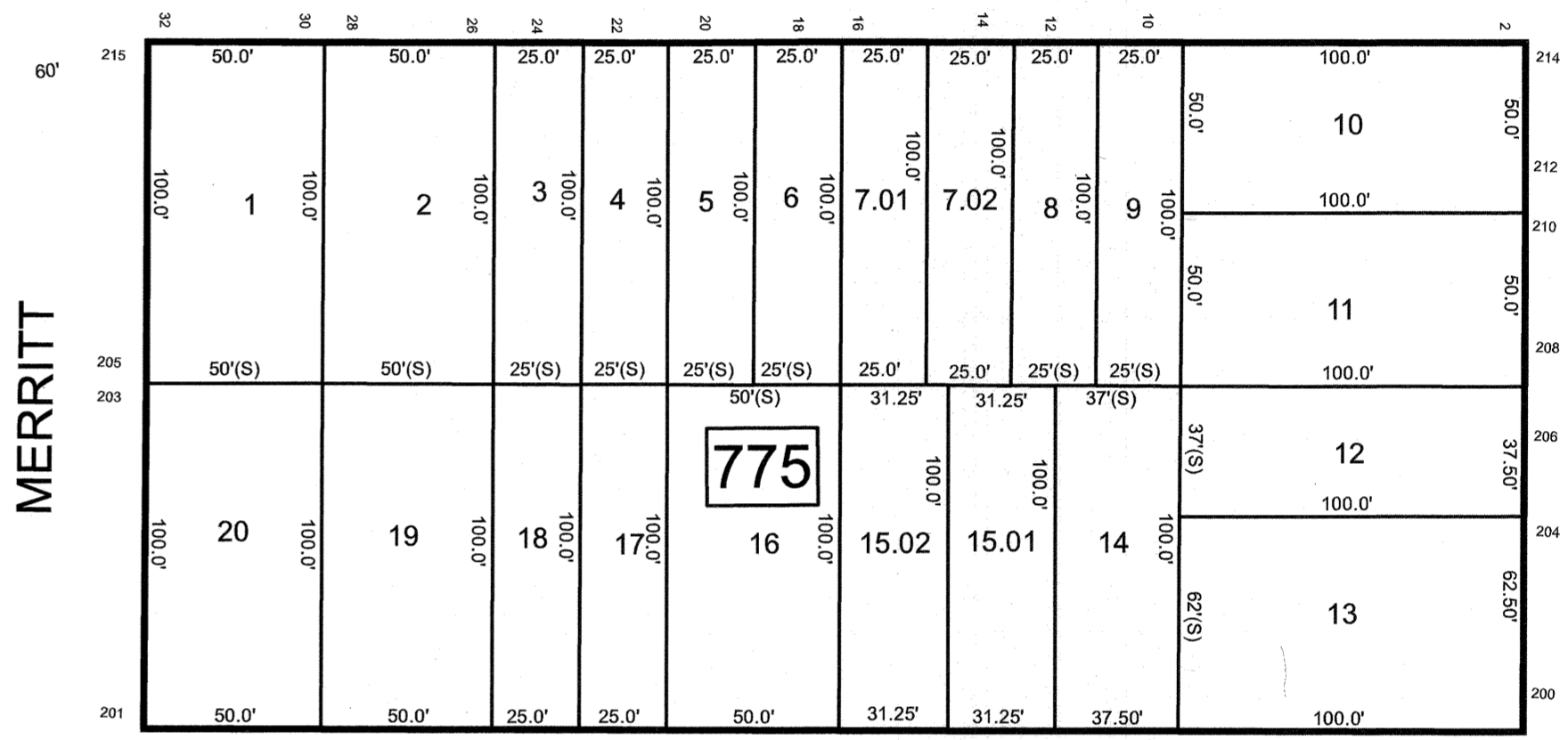
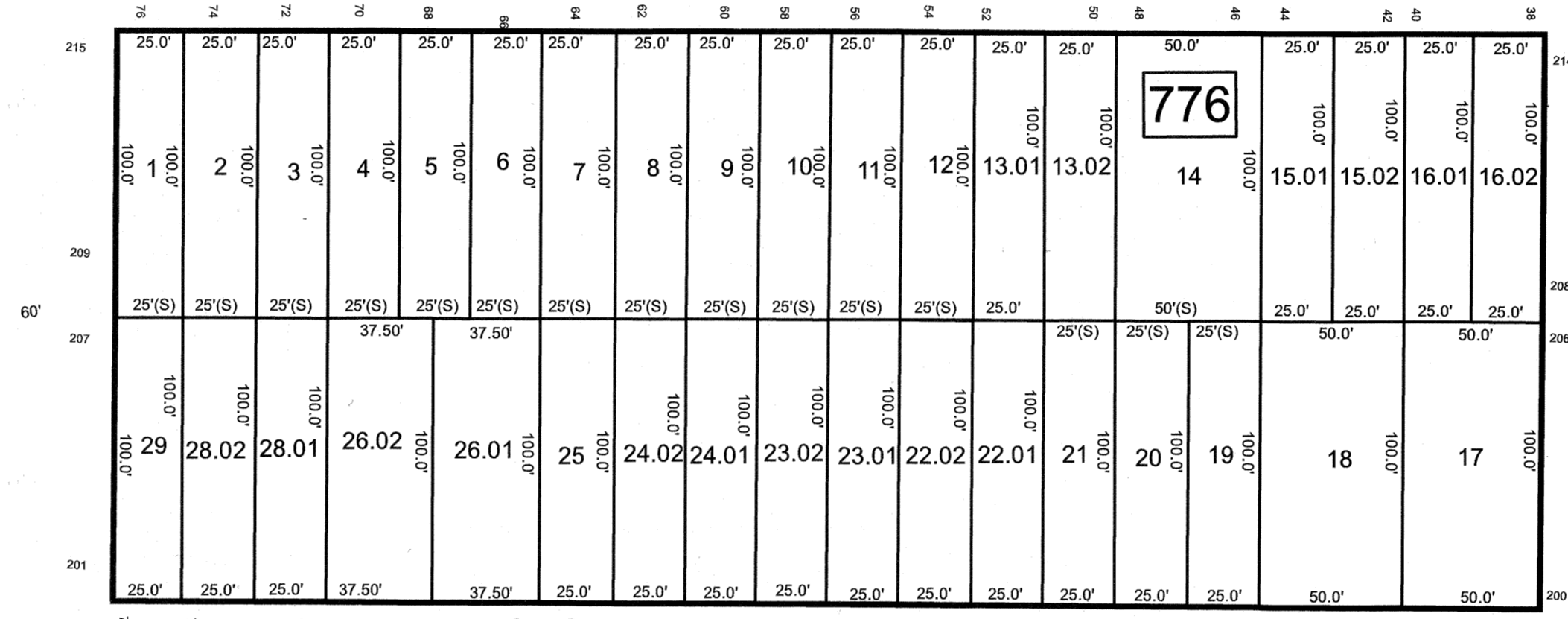
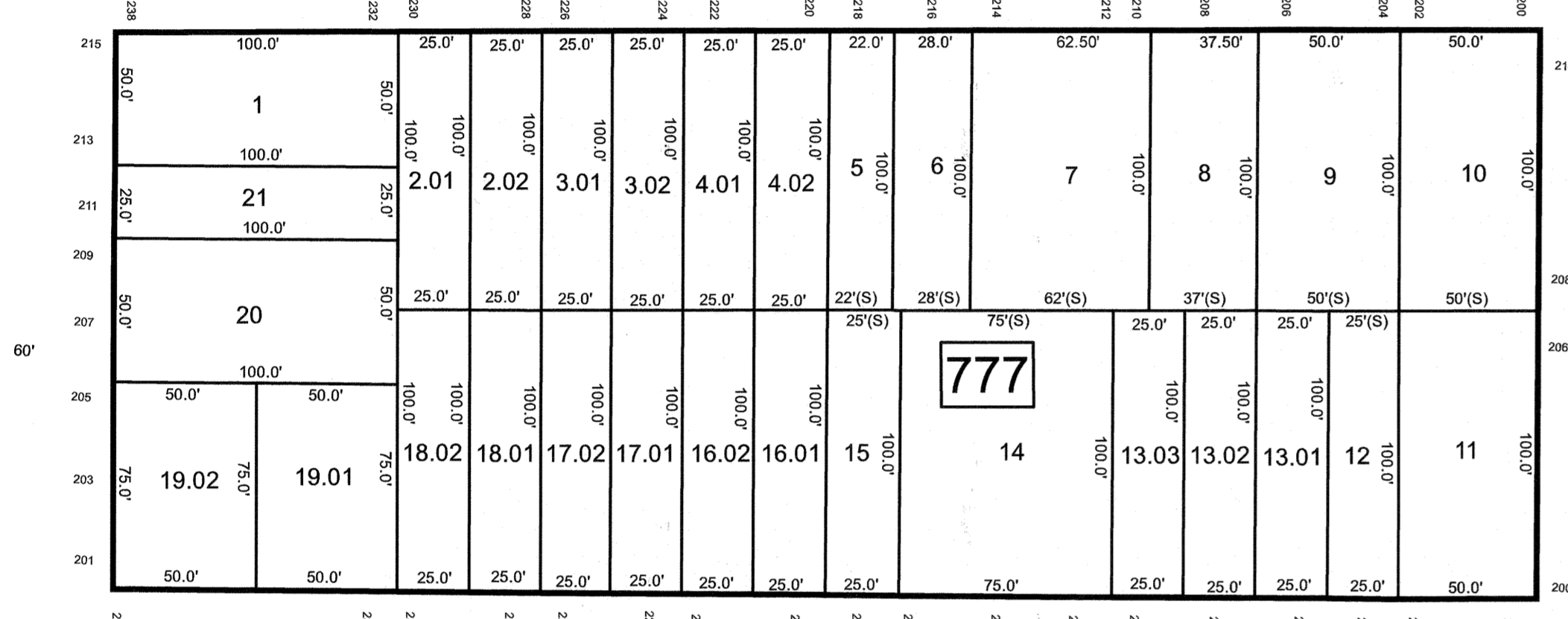
SEE SHEET 166

SEE SHEET 148

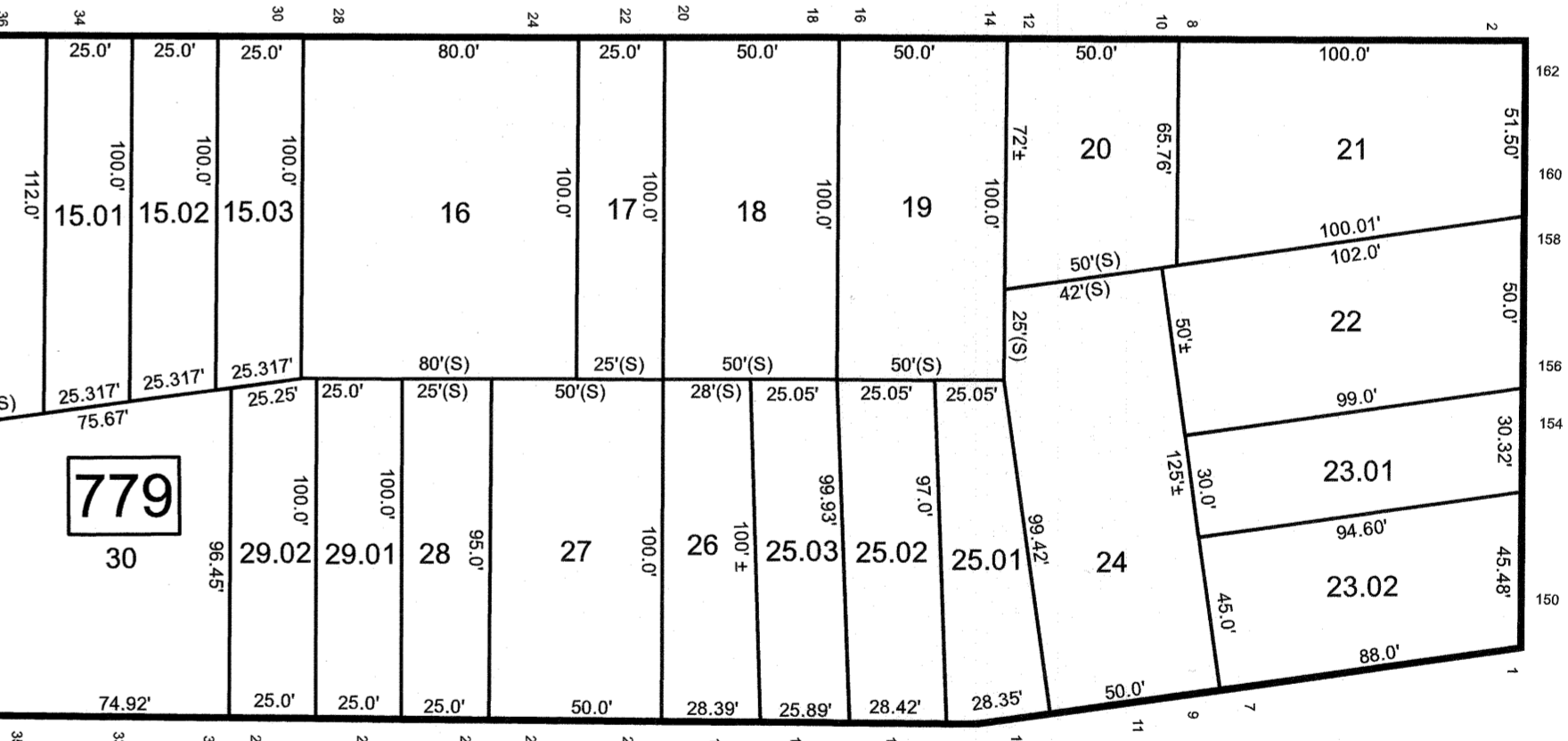
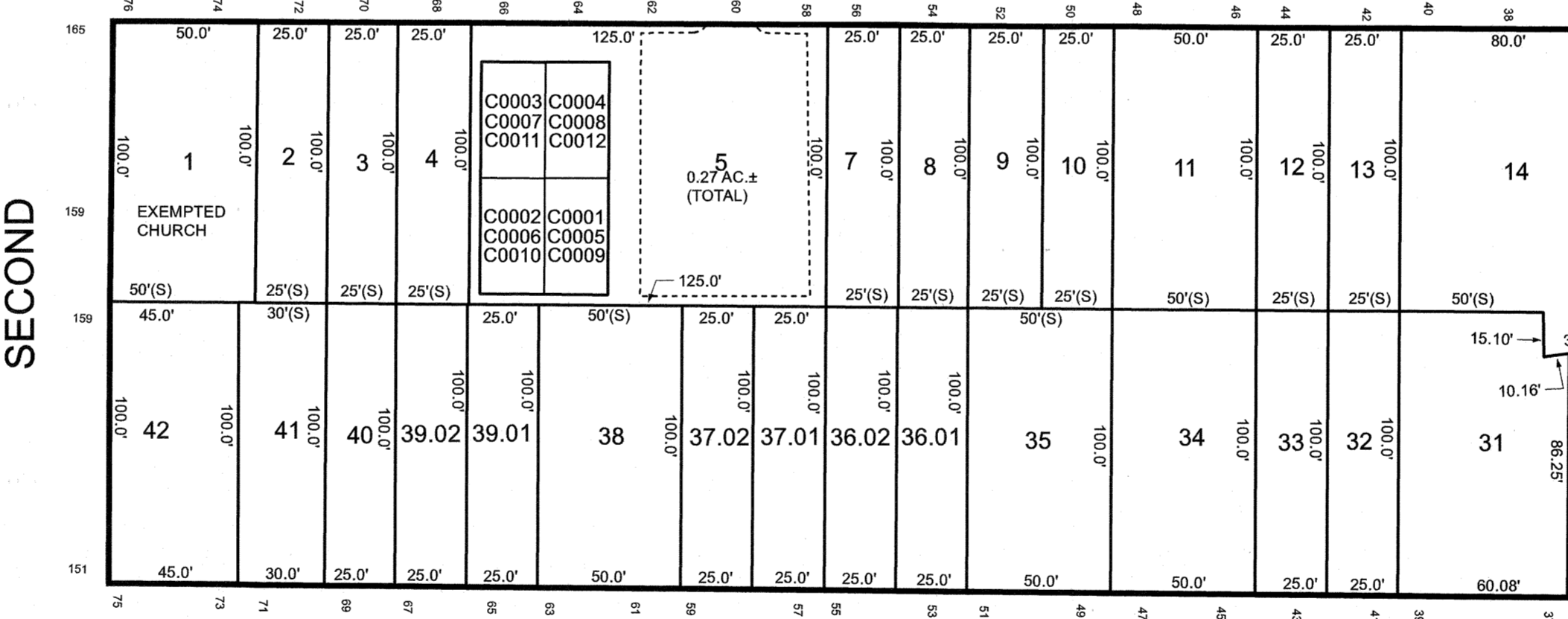
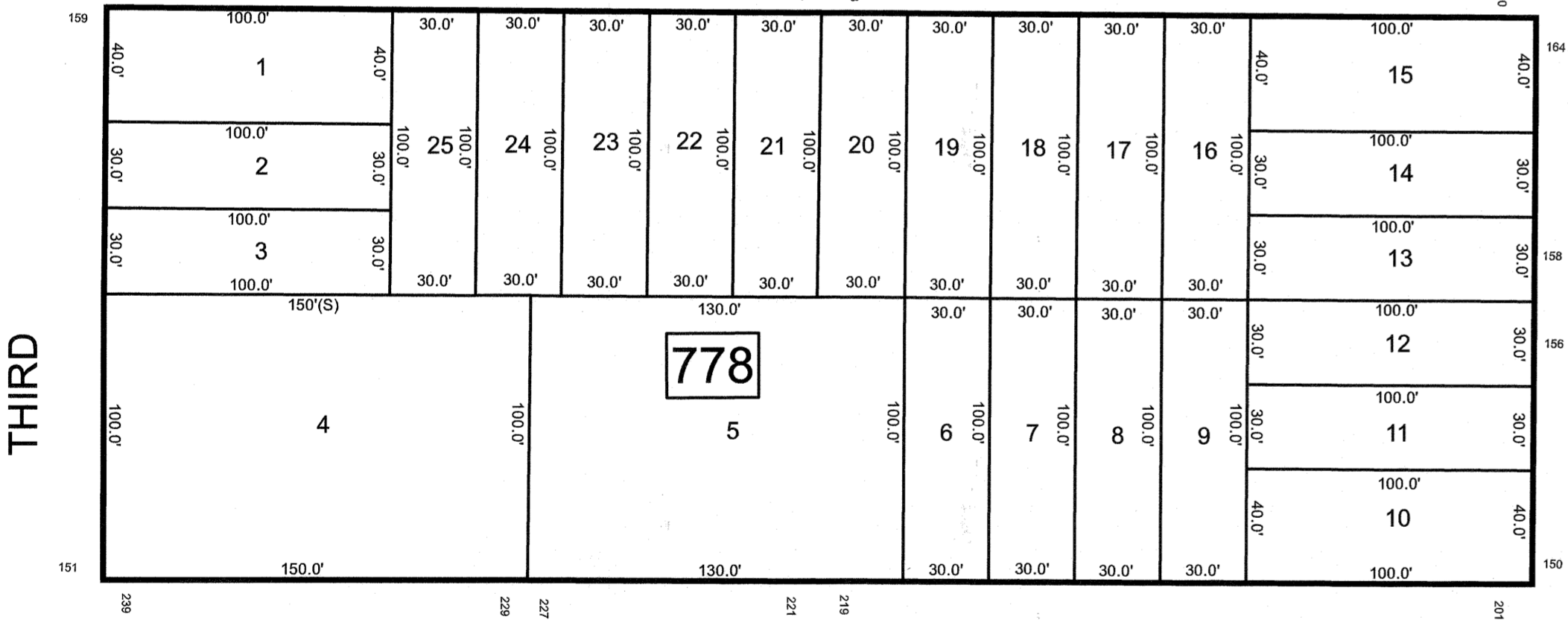
FLORIDA



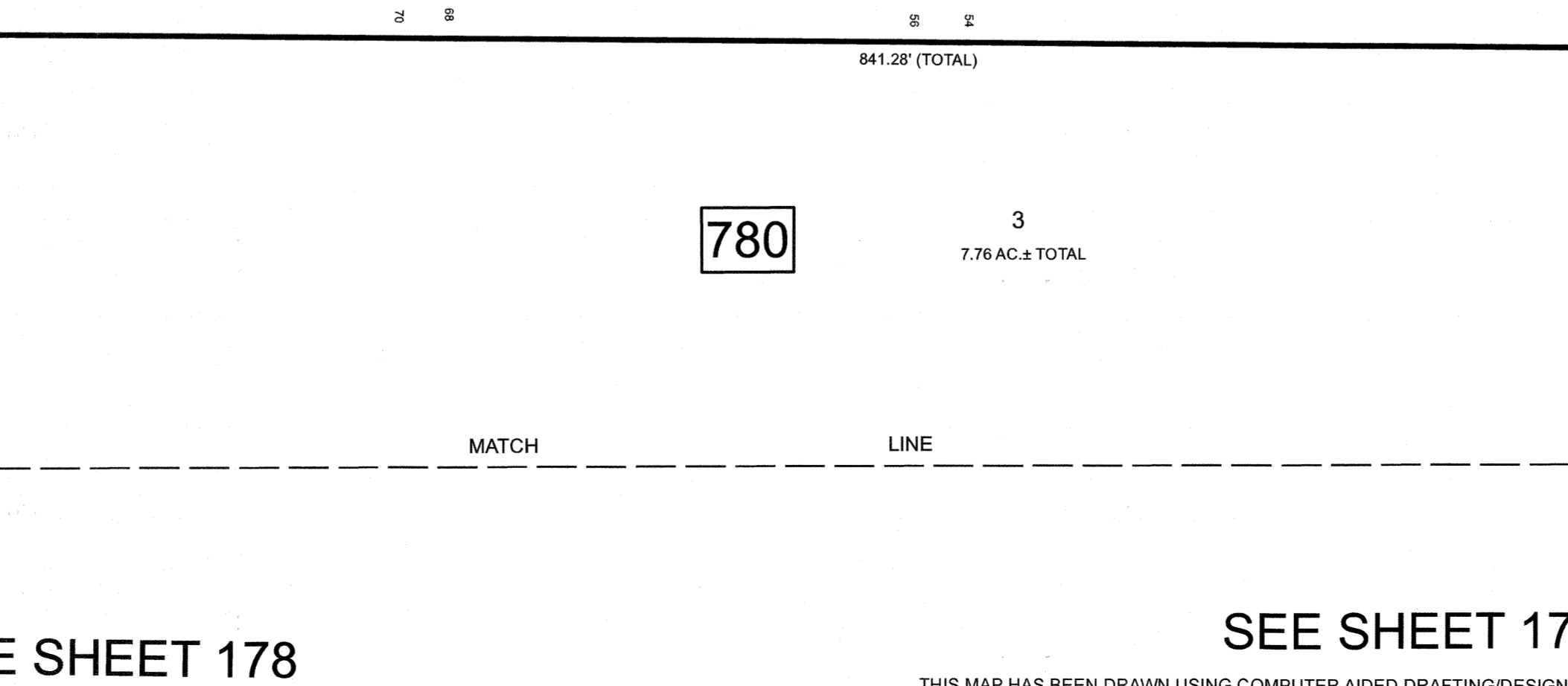
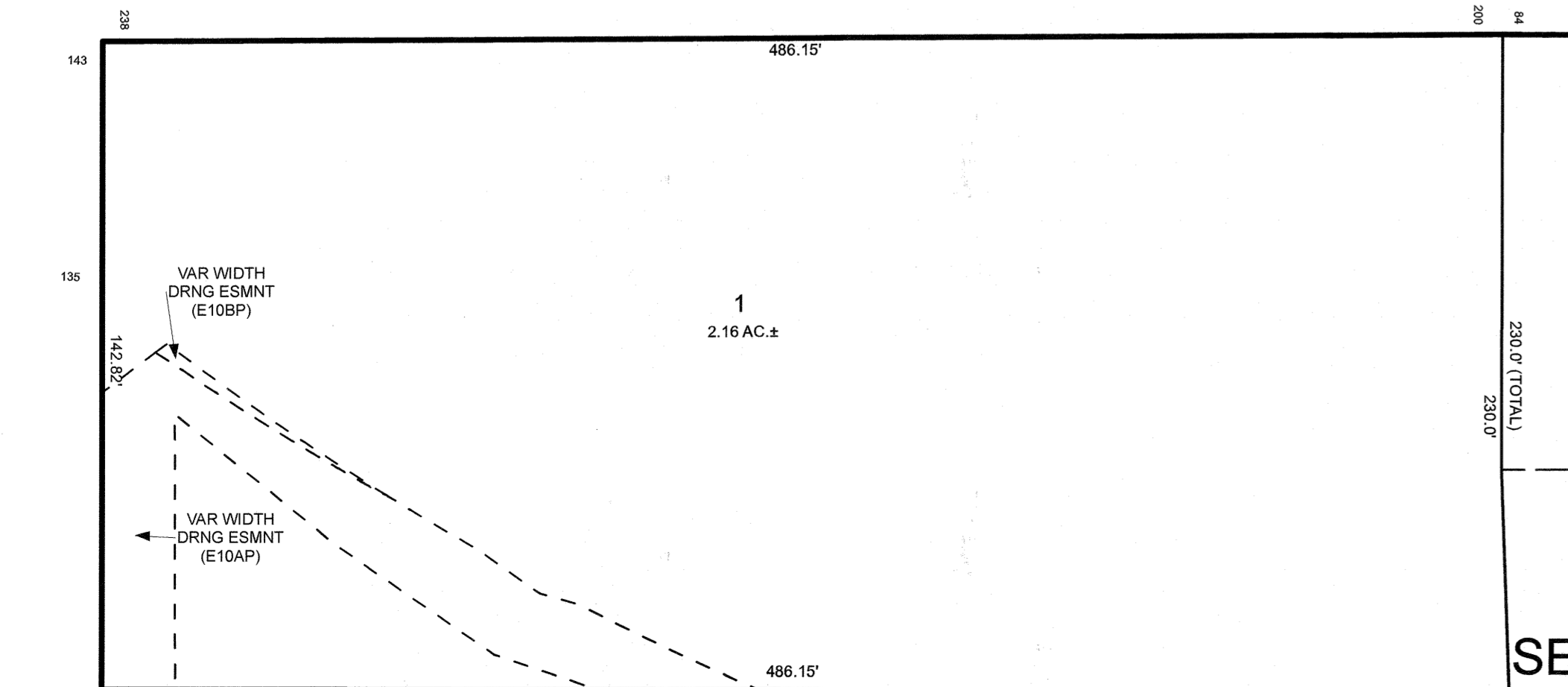
GENEVA



SOUTH



BUTLER



BLOCK	LOT	QUAL	SQ. FT.	FLOOR	UNIT NO.
779	5	C0001	826	1	1A
		C0002	826	1	1B
		C0003	826	1	1C
		C0004	826	1	1D
		C0005	826	2	2A
		C0006	826	2	2B

NEW JERSEY DEPARTMENT OF THE TREASURY
 DIVISION OF TAXATION
 APPROVED AS A TAX MAP PURSUANT TO THE AUTHORITY OF
 N.J.S.A. 84:1-16 AND N.J.S.A. 84:30-1
 FOR THE DIRECTOR, DIVISION OF TAXATION

DATE MAR 3 1 2022 SERIAL NO. 1129

TAX MAP
CITY OF ELIZABETH
 UNION COUNTY NEW JERSEY
 SCALE: 1" = 50' FEB. 15, 2019
GLEN J. LLOYD
 N.J. PROFESSIONAL LAND SURVEYOR LIC. #GS037598
 MASER CONSULTING PA
 331 NEWMAN SPRINGS ROAD, SUITE 203
 RED BANK, NJ 07701

SEE SHEET 166

SEE SHEET 176

SEE SHEET 164

SEE SHEET 179

SEE SHEET 179

SEE SHEET 178

THIS MAP HAS BEEN DRAWN USING COMPUTER AIDED DRAFTING/DESIGN (CAD/D)