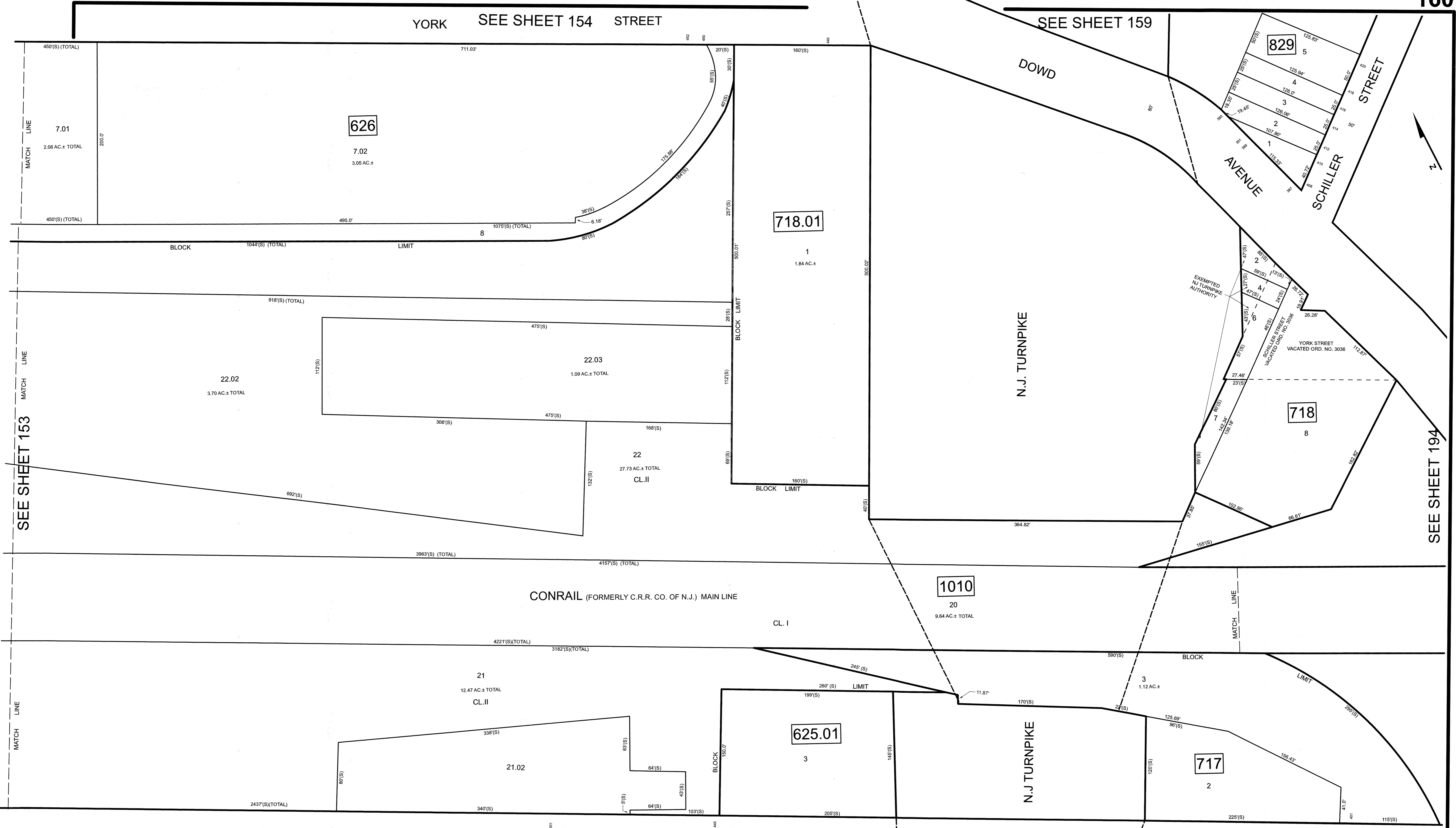


YORK SEE SHEET 154 STREET

SEE SHEET 159



SEE SHEET 153


SEE SHEET 194

REVISIONS		
DATE	NAME	LIC. NO.

WIDTH VARIES  
PAPETTI PLAZA

SEE SHEET 161

NEW JERSEY DEPARTMENT OF THE TREASURY  
DIVISION OF TAXATION  
APPROVED AS A TAX MAP PURSUANT TO THE AUTHORITY OF  
N.J.S.A. 84:1-15 AND N.J.S.A. 84:2D-1  
FOR THE DIRECTOR, DIVISION OF TAXATION



DATE MAR 31 2022 SERIAL NO. 1129

**TAX MAP**  
**CITY OF ELIZABETH**  
UNION COUNTY NEW JERSEY  
SCALE: 1" = 50' FEB. 15, 2019  
**GLEN J. LLOYD**  
N.J. PROFESSIONAL LAND SURVEYOR LIC. #GS037598  
MASER CONSULTING PA  
331 NEWMAN SPRINGS ROAD, SUITE 203  
RED BANK, NJ 07701

THIS MAP HAS BEEN DRAWN USING COMPUTER AIDED DRAFTING/DESIGN (CAD/D)