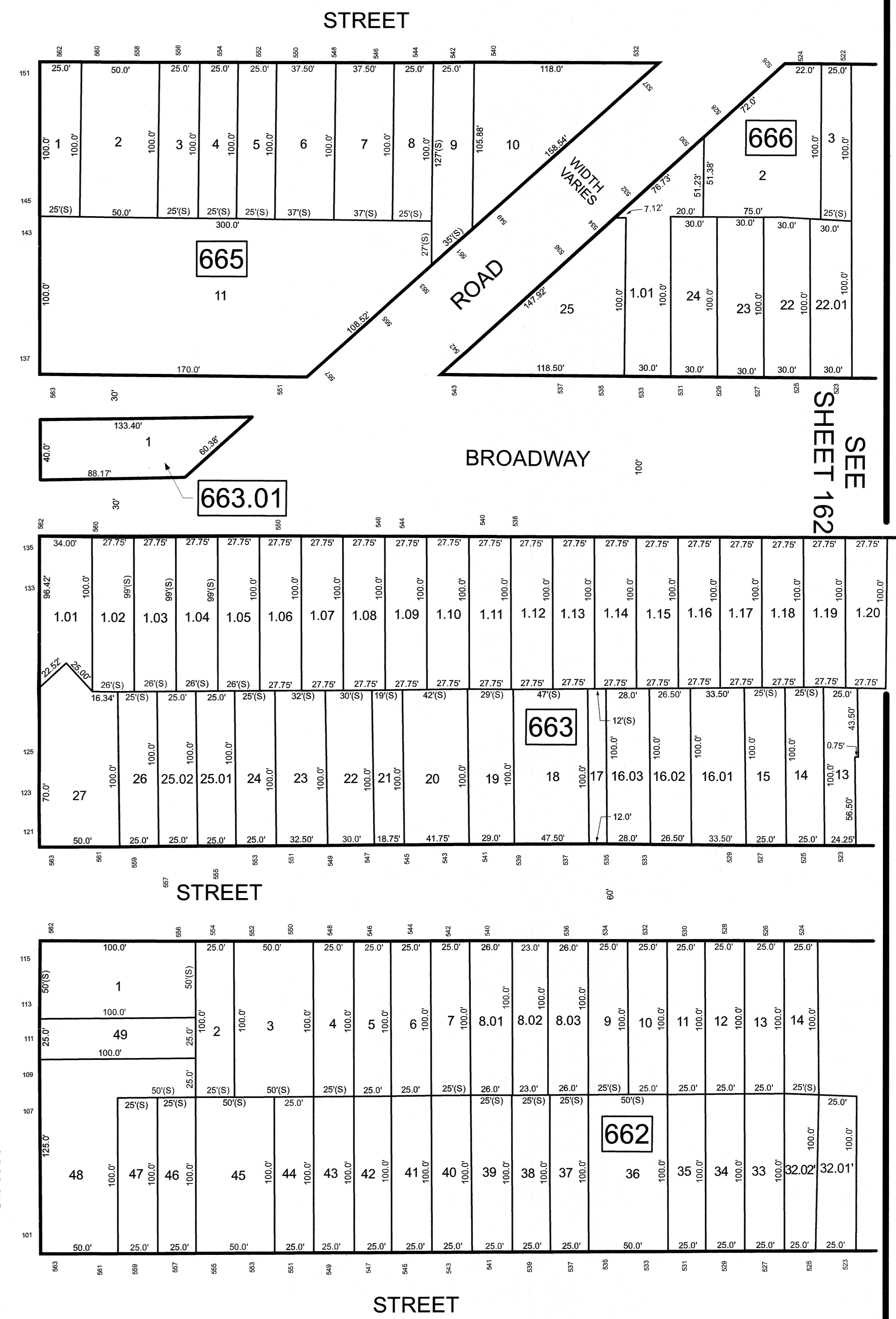
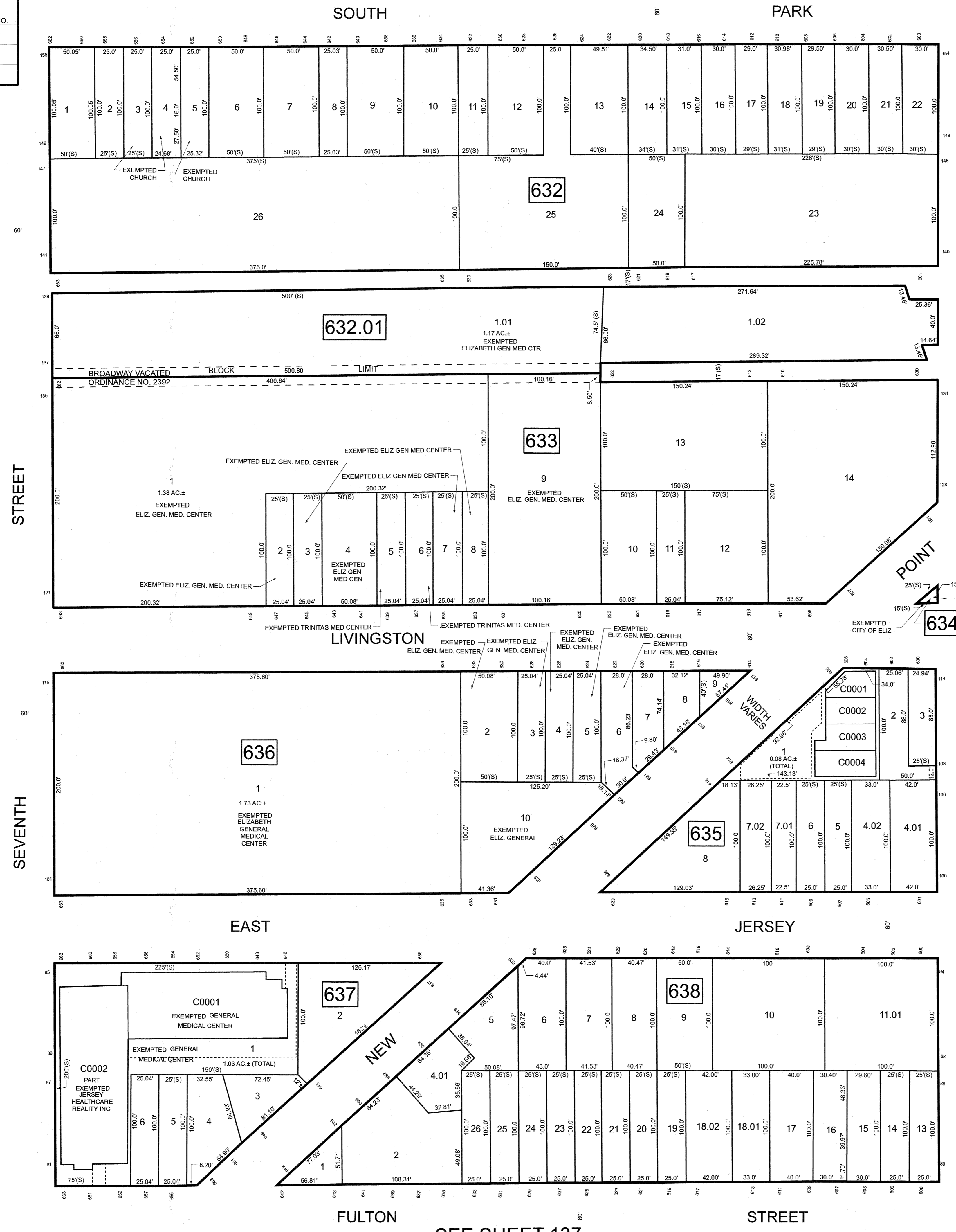
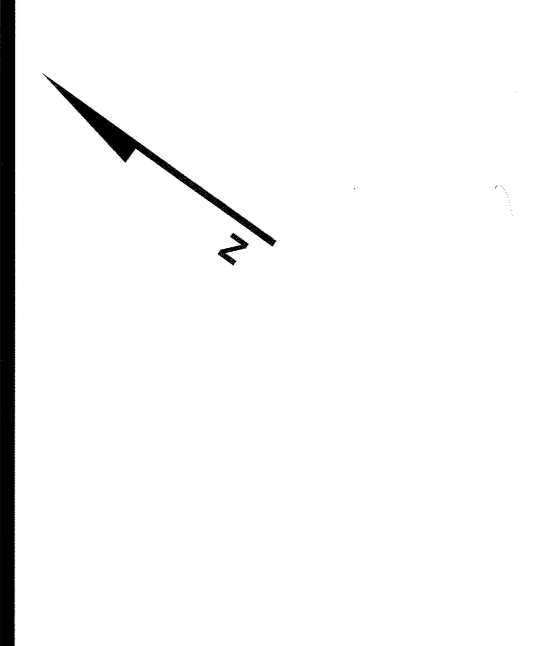


REVISIONS		
DATE	NAME	LIC. NO.



SEE SHEET 136

SEVENTH STREET

SIXTH STREET

BLOCK	LOT	QUAL	SQ. FT.	FLOOR	UNIT NO.
637	1	C0001	14,519	3/3	S1
		C0002	26,355	2/3/4	R1

BLOCK	LOT	QUAL	SQ. FT.	FLOOR	UNIT NO.
635	1	C0001	1,409	1/2	1
		C0002	1,985	1/2	2
		C0003	2,150	1/2	3
		C0004	2,420	1/2	4

THIS MAP HAS BEEN DRAWN USING COMPUTER AIDED DRAFTING/DESIGN (CAD/D)

NEW JERSEY DEPARTMENT OF THE TREASURY
 DIVISION OF TAXATION
 APPROVED AS A TAX MAP PURSUANT TO THE AUTHORITY OF
 N.J.S.A. 54:1-16 AND N.J.S.A. 54:20-1
 FOR THE DIRECTOR, DIVISION OF TAXATION



DATE MAR 31 2022 SERIAL NO. 1129

TAX MAP
CITY OF ELIZABETH
 UNION COUNTY NEW JERSEY
 SCALE: 1" = 50' FEB. 15, 2019
GLEN J. LLOYD
 N.J. PROFESSIONAL LAND SURVEYOR LIC. #GS037598
 MASER CONSULTING PA
 331 NEWMAN SPRINGS ROAD, SUITE 203
 RED BANK, NJ 07701