

REVISIONS		
DATE	NAME	LIC. NO.

SEE SHEET 149

SEE SHEET 163

SEE SHEET 164

FIRST

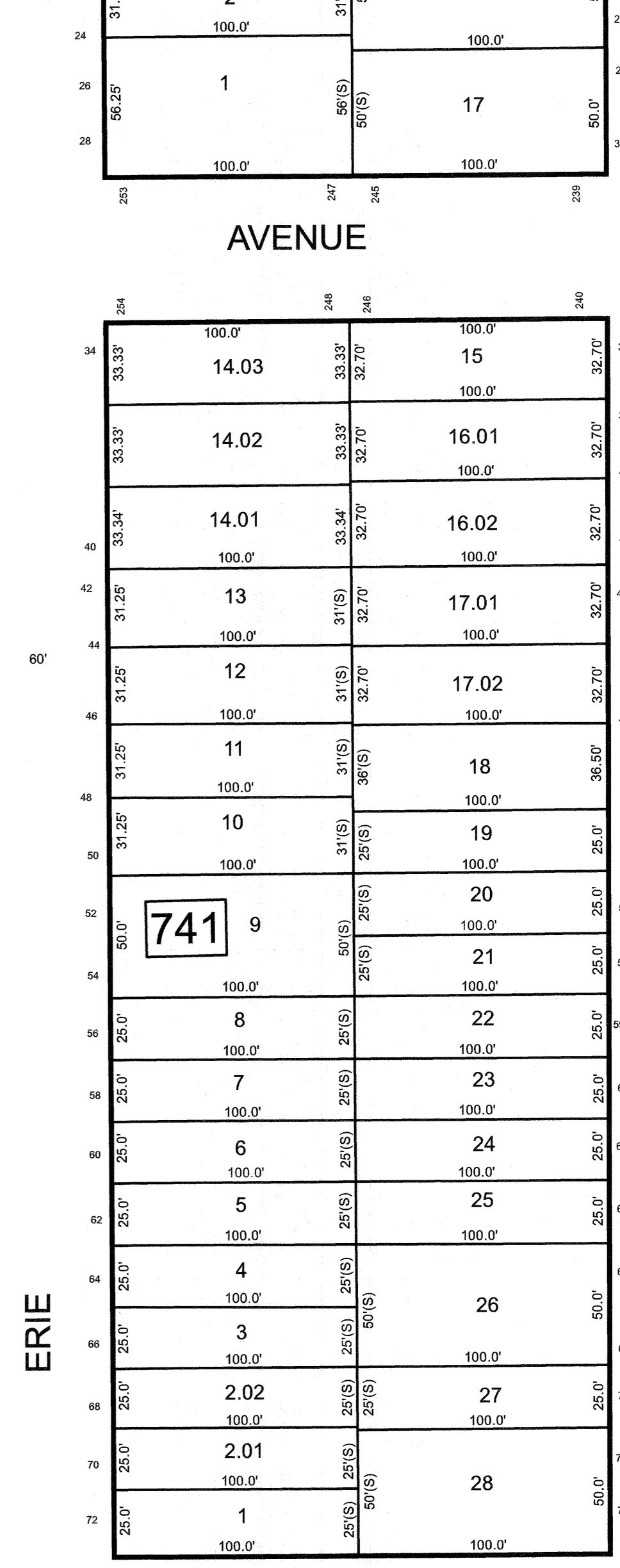
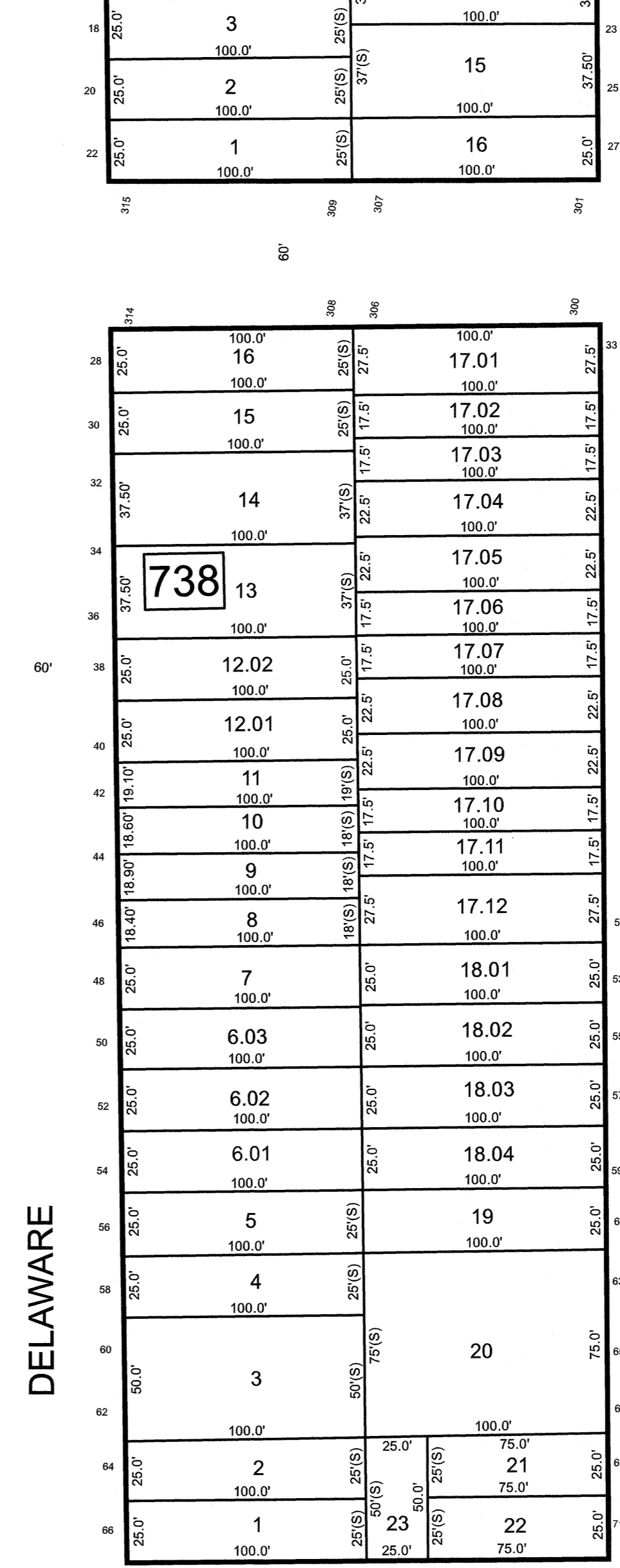
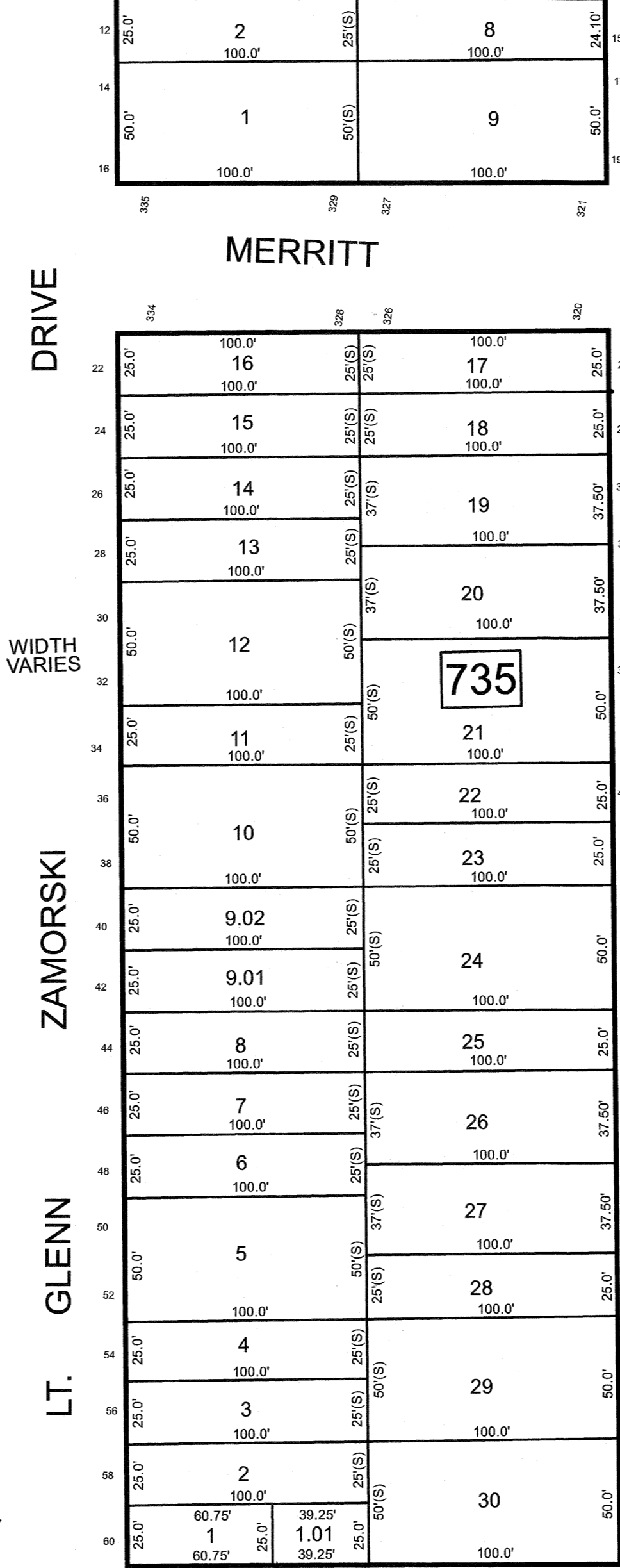
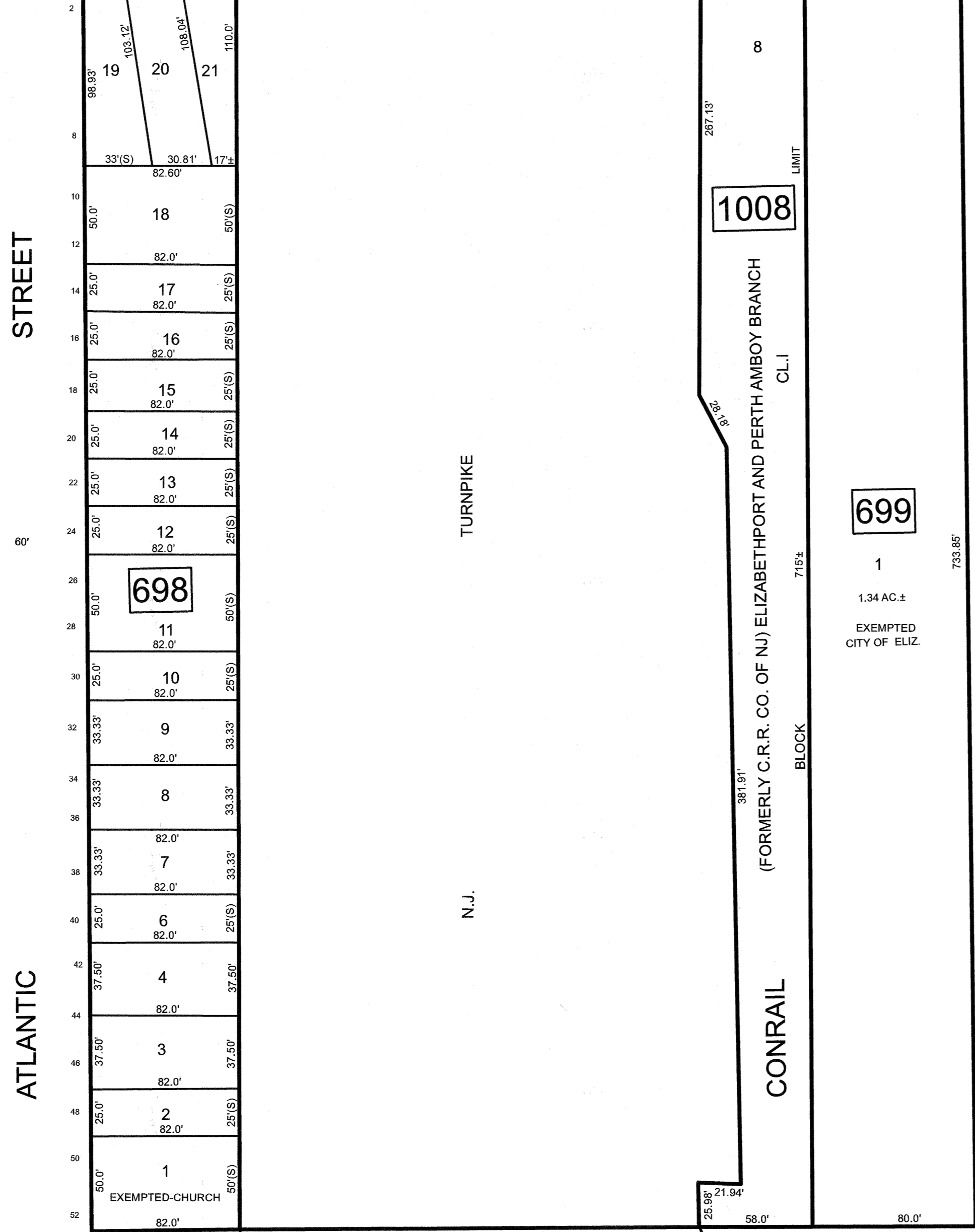
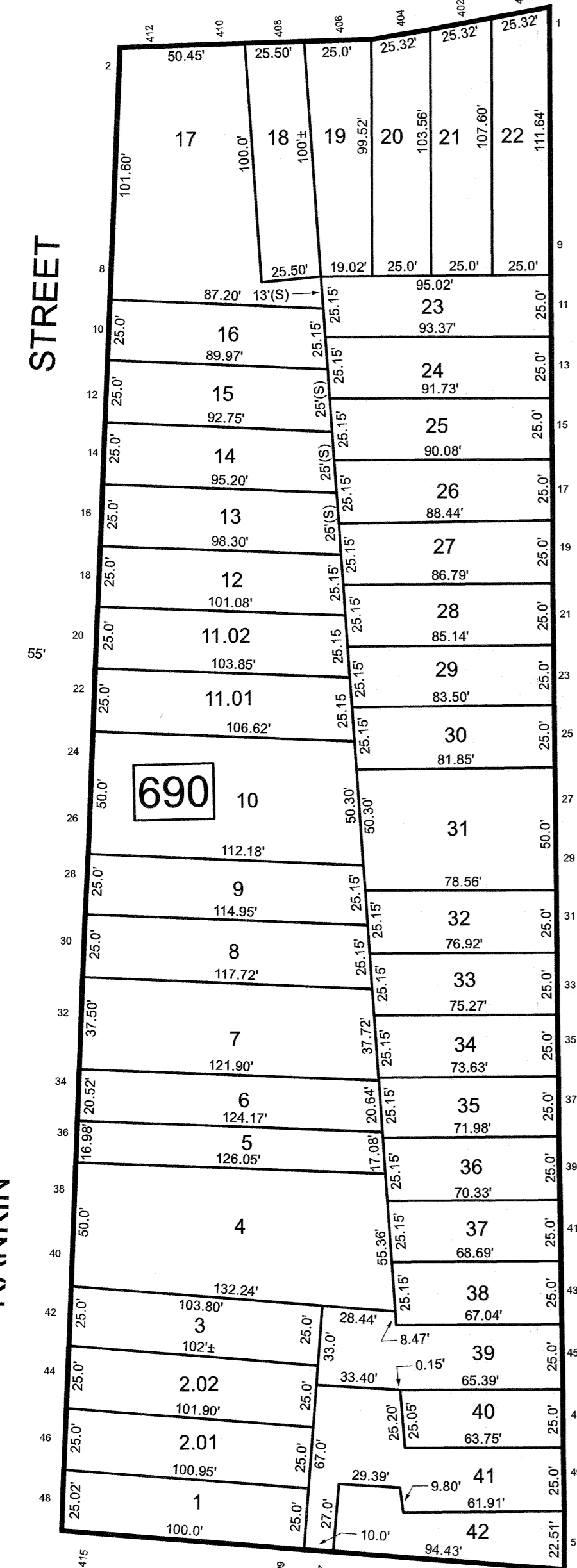
FOURTH STREET

AVENUE

STREET

STREET

STREET



SEE SHEET 165

SEE SHEET 138

SECOND

1008

699
1
1.34 AC.±
EXEMPTED CITY OF ELIZ.

735

738

741

AVENUE

NEW JERSEY DEPARTMENT OF THE TREASURY
DIVISION OF TAXATION
APPROVED AS A TAX MAP PURSUANT TO THE AUTHORITY OF
N.J.S.A. 54:1-18 AND N.J.S.A. 54:6-1
FOR THE DIRECTOR, DIVISION OF TAXATION



DATE MAR 31 2022 SERIAL NO. 1129

TAX MAP
CITY OF ELIZABETH
UNION COUNTY NEW JERSEY
SCALE: 1" = 50' FEB. 15, 2019
GLEN J. LLOYD
N.J. PROFESSIONAL LAND SURVEYOR LIC. #GS037598
MASER CONSULTING PA
331 NEWMAN SPRINGS ROAD, SUITE 203
RED BANK, NJ 07701

SEE SHEET 166

SEE SHEET 147

THIS MAP HAS BEEN DRAWN USING COMPUTER AIDED DRAFTING/DESIGN (CAD/D)