

SEE SHEET 150

REVISIONS		
DATE	NAME	LIC. NO.

SEE SHEET 138

LOOMIS STREET

RANKIN STREET

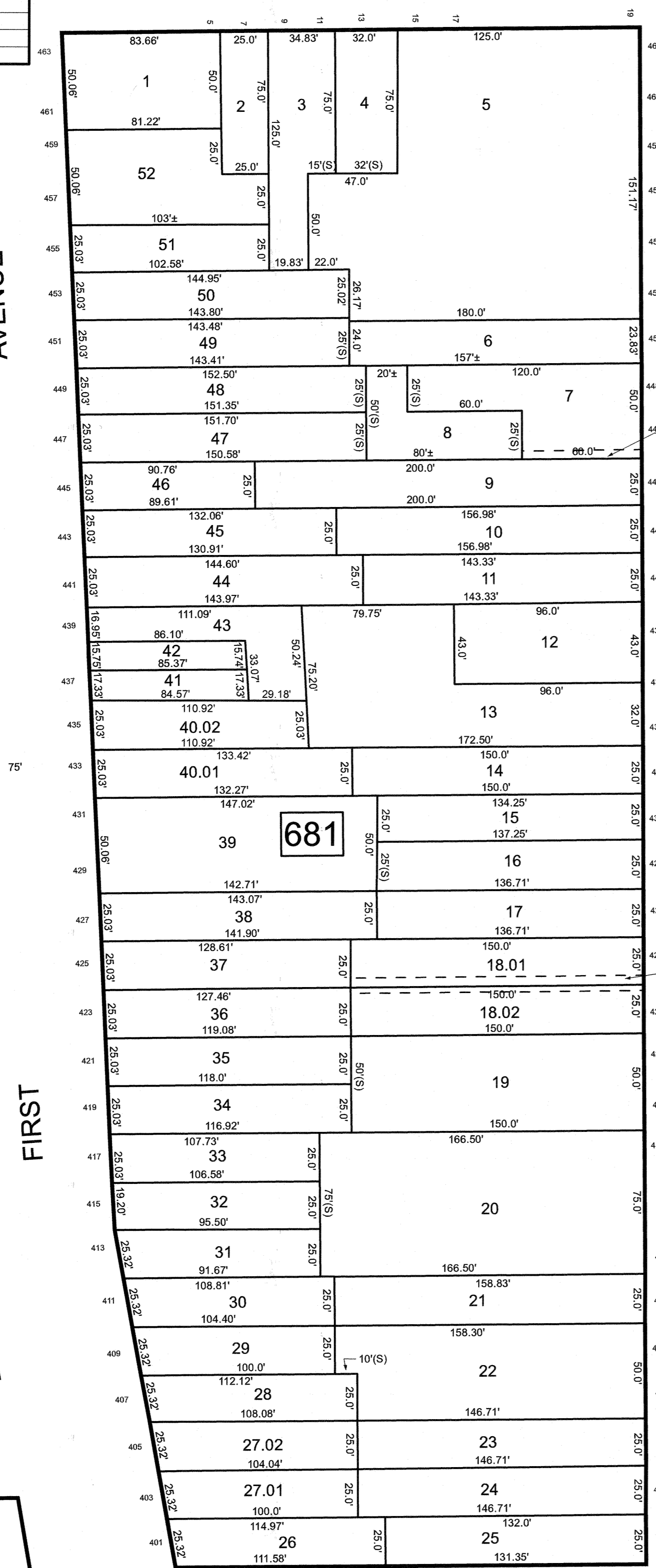
ATLANTIC STREET

SEE SHEET 148

AVENUE

FIRST

N.J. TURNPIKE



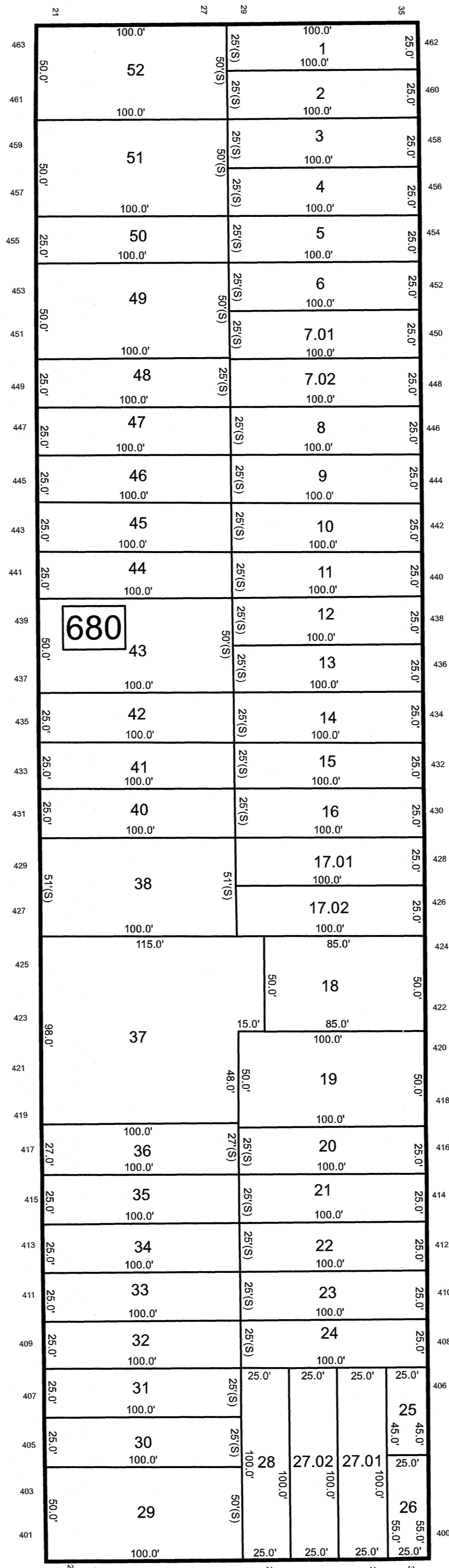
AVENUE

ELIZABETH

FIFTH

FOURTH

N.J. TURNPIKE

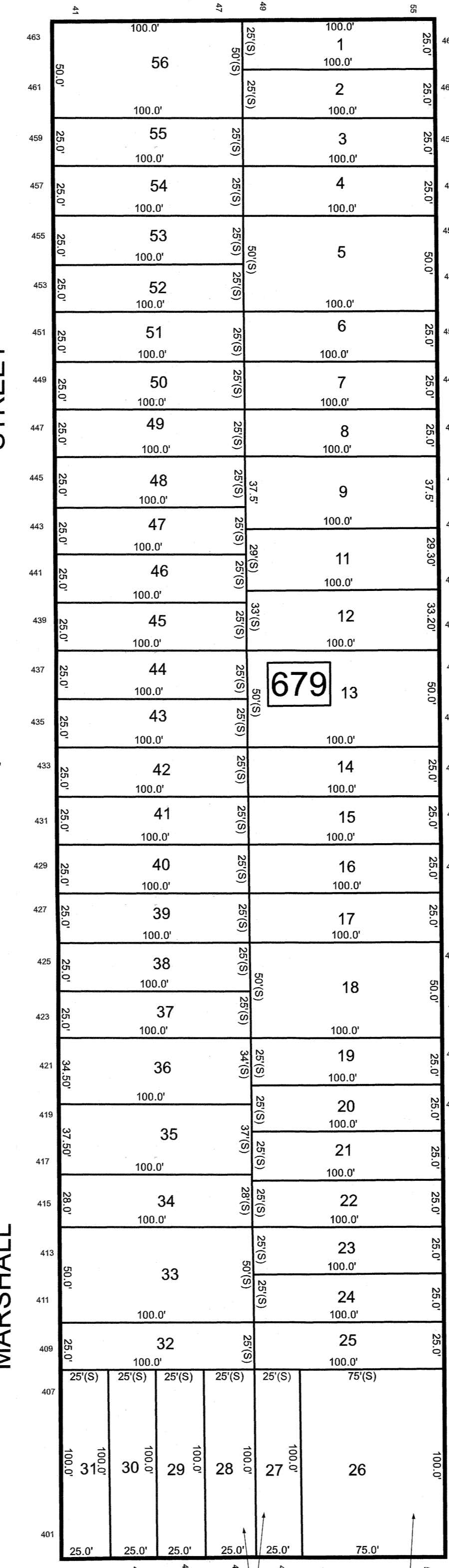


STREET

MARSHALL

N.J. TURNPIKE

SEE SHEET 163



STREET

FRANKLIN

N.J. TURNPIKE

STREET

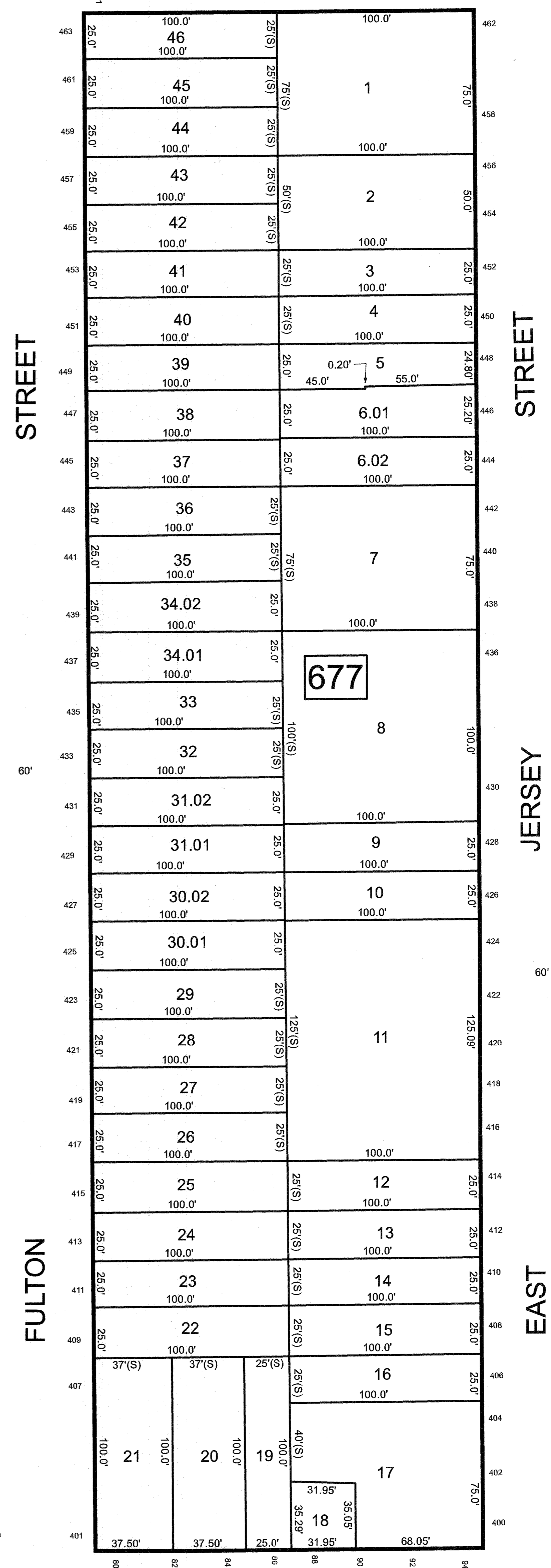
NEW JERSEY DEPARTMENT OF THE TREASURY
DIVISION OF TAXATION
APPROVED AS A TAX MAP PURSUANT TO THE AUTHORITY OF
N.J.S.A. 54:15 AND N.J.S.A. 54:5-1
FOR THE DIRECTOR, DIVISION OF TAXATION



DATE MAR 31 2022 SERIAL NO. 1129

N.J. TURNPIKE

TAX MAP
CITY OF ELIZABETH
 UNION COUNTY NEW JERSEY
 SCALE: 1" = 50' FEB. 15, 2019
GLEN J. FLOYD
 N.J. PROFESSIONAL LAND SURVEYOR LIC. #GS037598
 MASER CONSULTING PA
 331 NEWMAN SPRINGS ROAD, SUITE 203
 RED BANK, NJ 07701



STREET

JERSEY

EAST

SEE SHEET 162

THIS MAP HAS BEEN DRAWN USING COMPUTER AIDED DRAFTING/DESIGN (CAD/D)