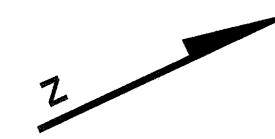
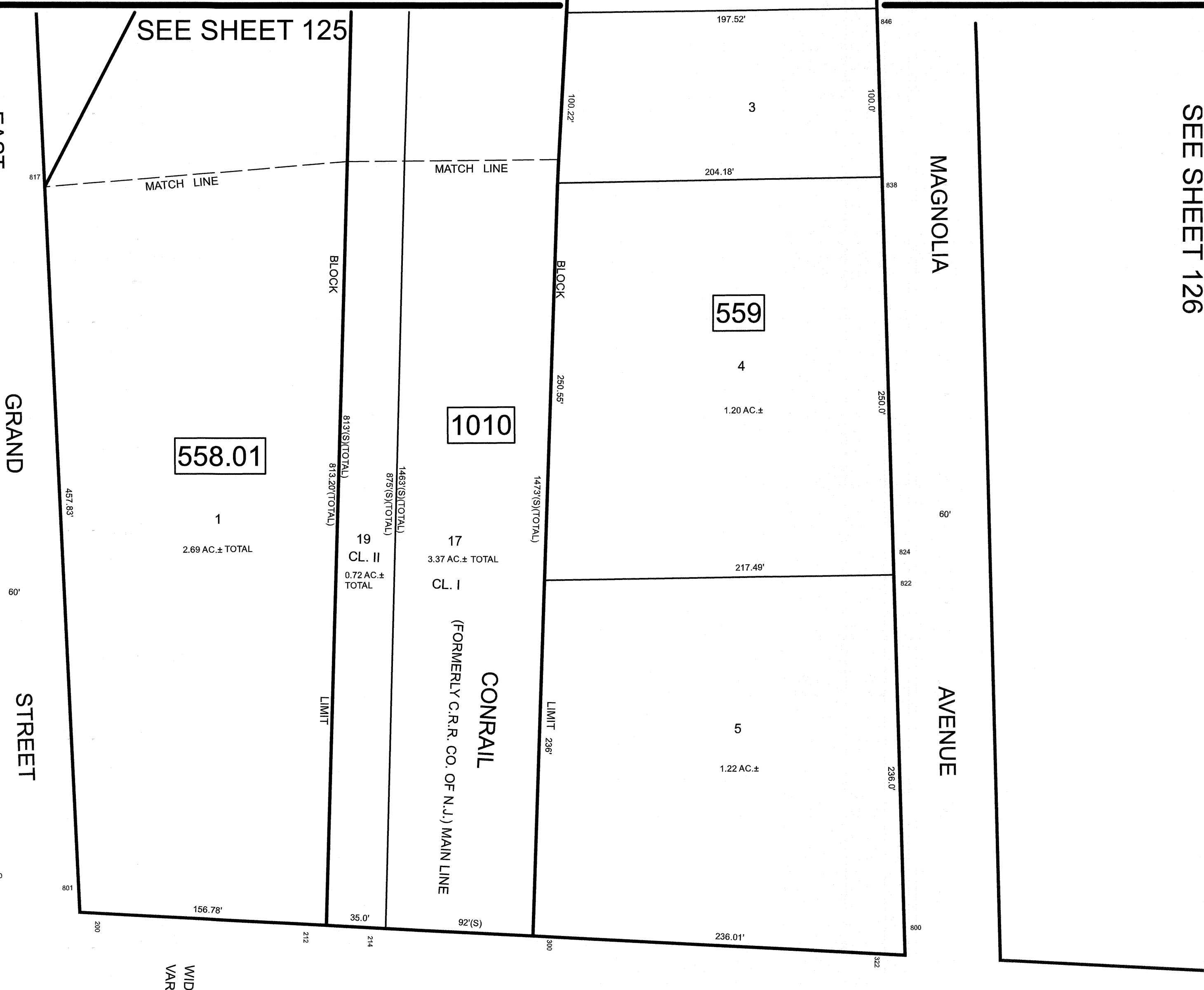
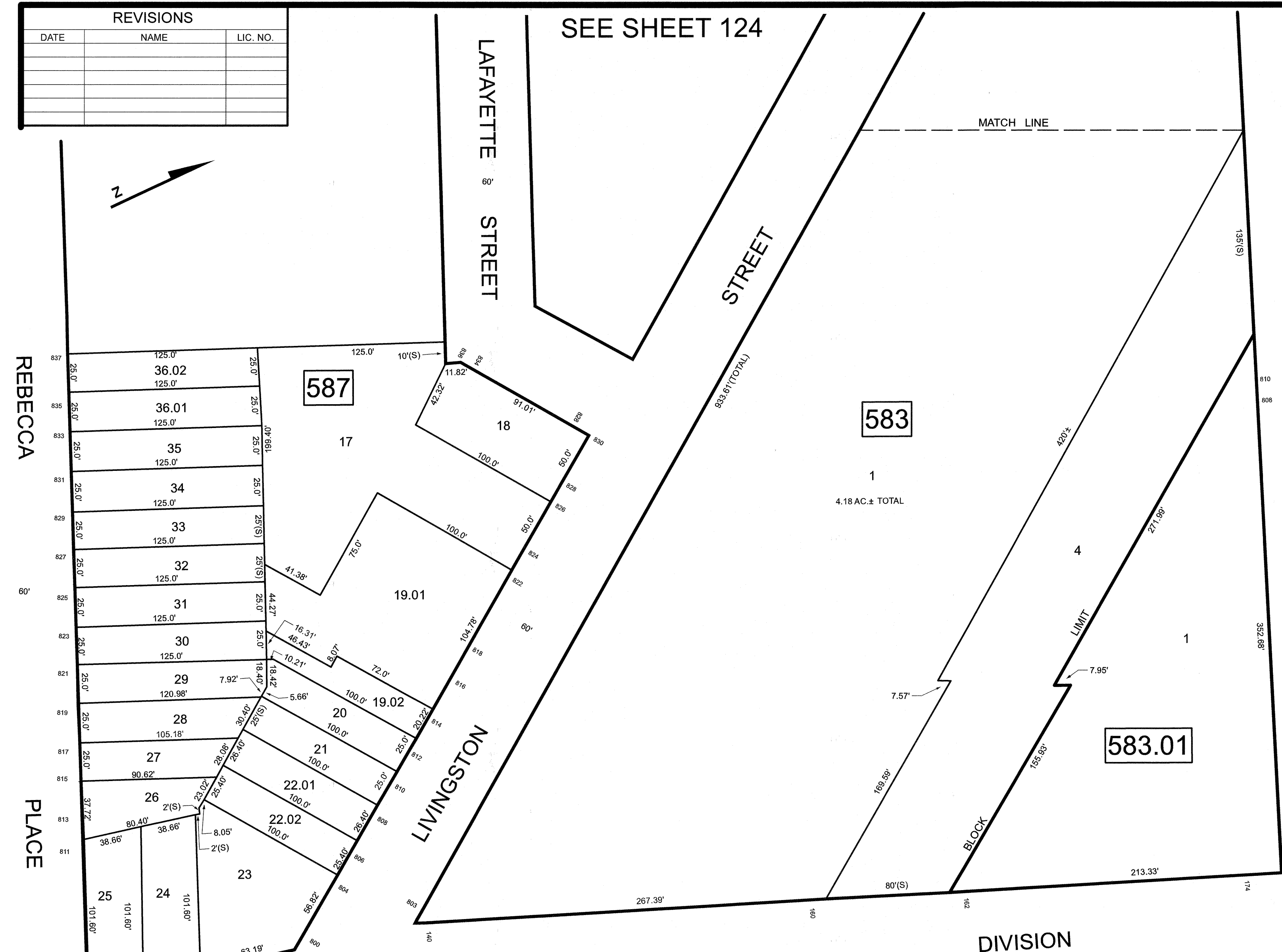


REVISIONS		
DATE	NAME	LIC. NO.

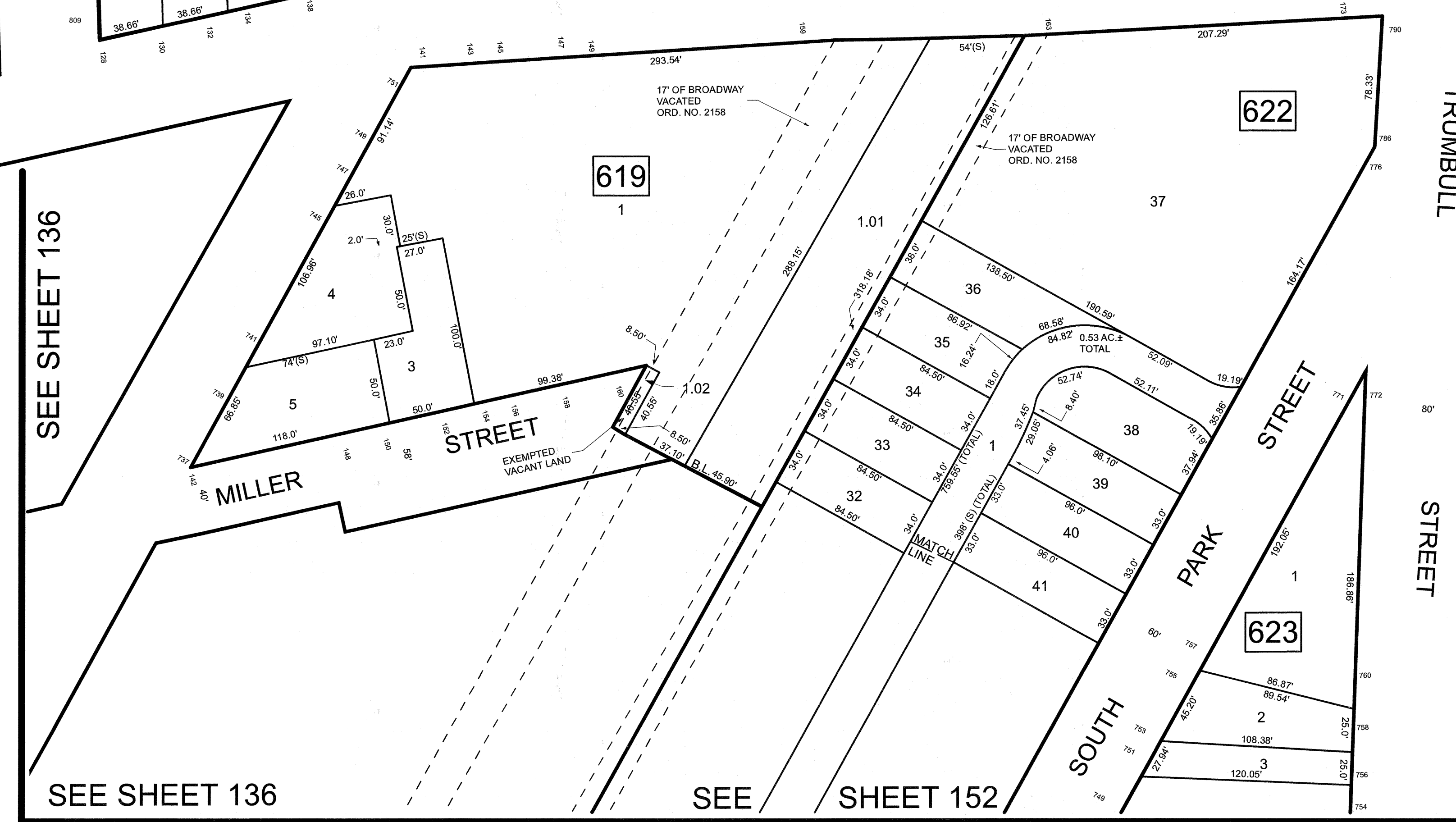


SEE SHEET 124



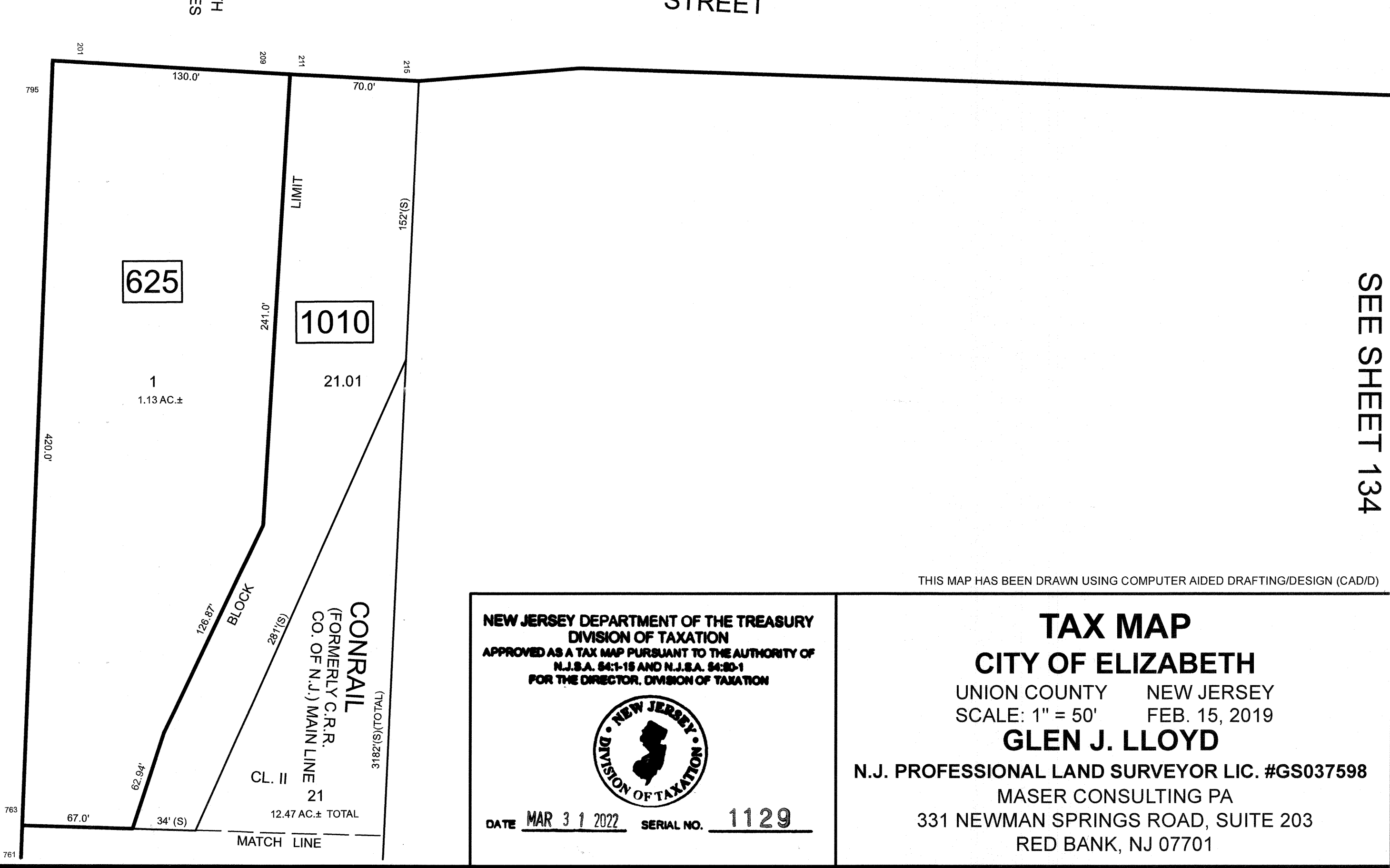
SEE SHEET 126

SEE SHEETS 136



SEE SHEET 136

SEE SHEET 152



SEE SHEET 134

THIS MAP HAS BEEN DRAWN USING COMPUTER AIDED DRAFTING/DESIGN (CAD/D)

NEW JERSEY DEPARTMENT OF THE TREASURY  
 DIVISION OF TAXATION  
 APPROVED AS A TAX MAP PURSUANT TO THE AUTHORITY OF  
 N.J.S.A. 54:18 AND N.J.S.A. 54:25-1  
 FOR THE DIRECTOR, DIVISION OF TAXATION

DATE **MAR 3 1 2022** SERIAL NO. **1129**

**TAX MAP**  
**CITY OF ELIZABETH**  
 UNION COUNTY NEW JERSEY  
 SCALE: 1" = 50' FEB. 15, 2019  
**GLEN J. LLOYD**  
 N.J. PROFESSIONAL LAND SURVEYOR LIC. #GS037598  
 MASER CONSULTING PA  
 331 NEWMAN SPRINGS ROAD, SUITE 203  
 RED BANK, NJ 07701