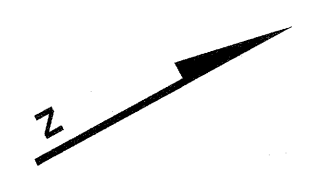


NORTH AVE.
EAST



SEE SHEET 129

574

3
3.78 AC.± TOTAL

SEE SHEET 130

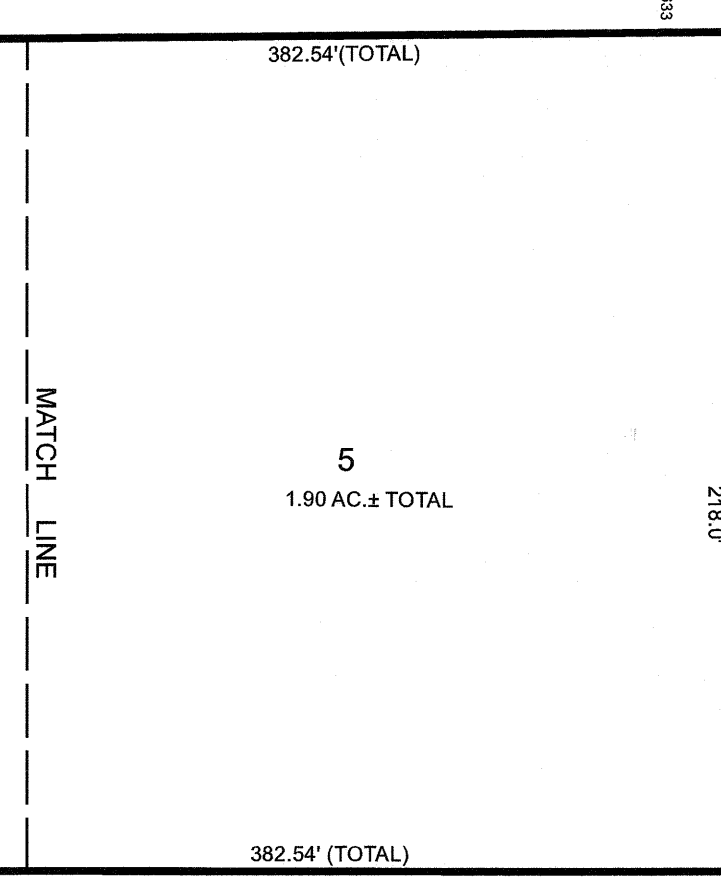
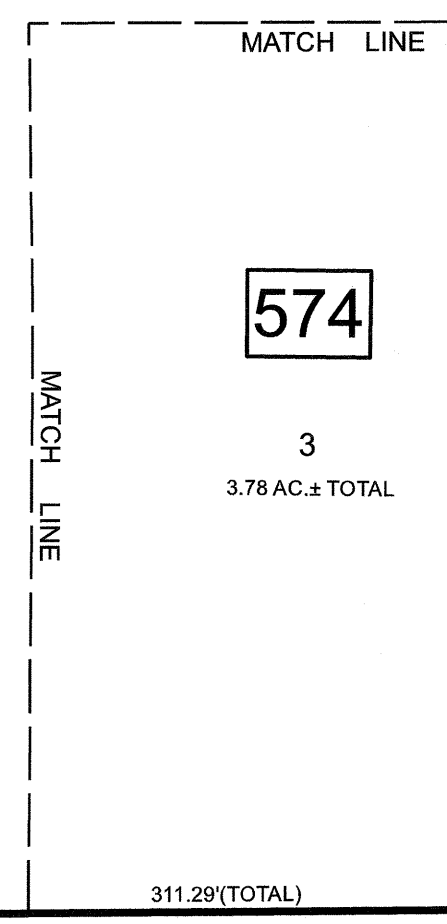
572

3
3.95 AC.± TOTAL

4.01
2.438 AC.±

WOODRUFF LANE

DIVISION STREET



832

6
5.80 AC.±

AVENUE

ROUTE 81

SEE SHEET 221

SEE SHEET 132

833

20
2.00 AC.±

PROGRESS STREET

STREET

DOWD AVENUE

831

2
5.0 AC.± TOTAL

19
2.22 AC.± TOTAL

2
11.21 AC.± TOTAL

THIS MAP HAS BEEN DRAWN USING COMPUTER AIDED DRAFTING/DESIGN (CAD/D)

REVISIONS		
DATE	NAME	LIC. NO.

NEW JERSEY DEPARTMENT OF THE TREASURY
DIVISION OF TAXATION
APPROVED AS A TAX MAP PURSUANT TO THE AUTHORITY OF
N.J.S.A. 84:1-18 AND N.J.S.A. 84:2B-1
FOR THE DIRECTOR, DIVISION OF TAXATION

DATE MAR 31 2022 SERIAL NO. 1129

TAX MAP
CITY OF ELIZABETH
UNION COUNTY NEW JERSEY
SCALE: 1" = 50' FEB. 15, 2019
GLEN J. LLOYD
N.J. PROFESSIONAL LAND SURVEYOR LIC. #GS037598
MASER CONSULTING PA
331 NEWMAN SPRINGS ROAD, SUITE 203
RED BANK, NJ 07701

SEE SHEET 220