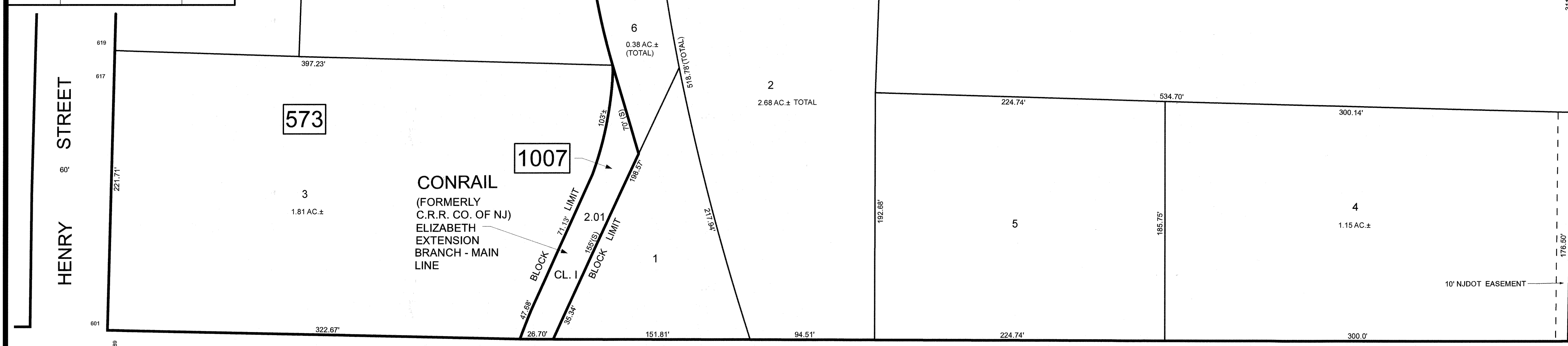


SEE SHEET 131

SEE SHEET 130

REVISIONS		
DATE	NAME	LIC. NO.

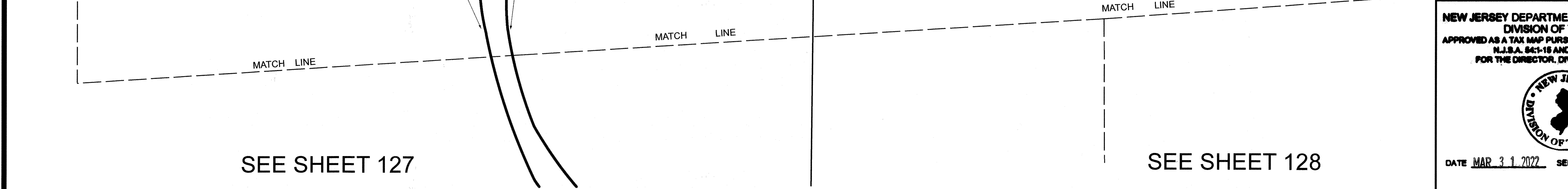
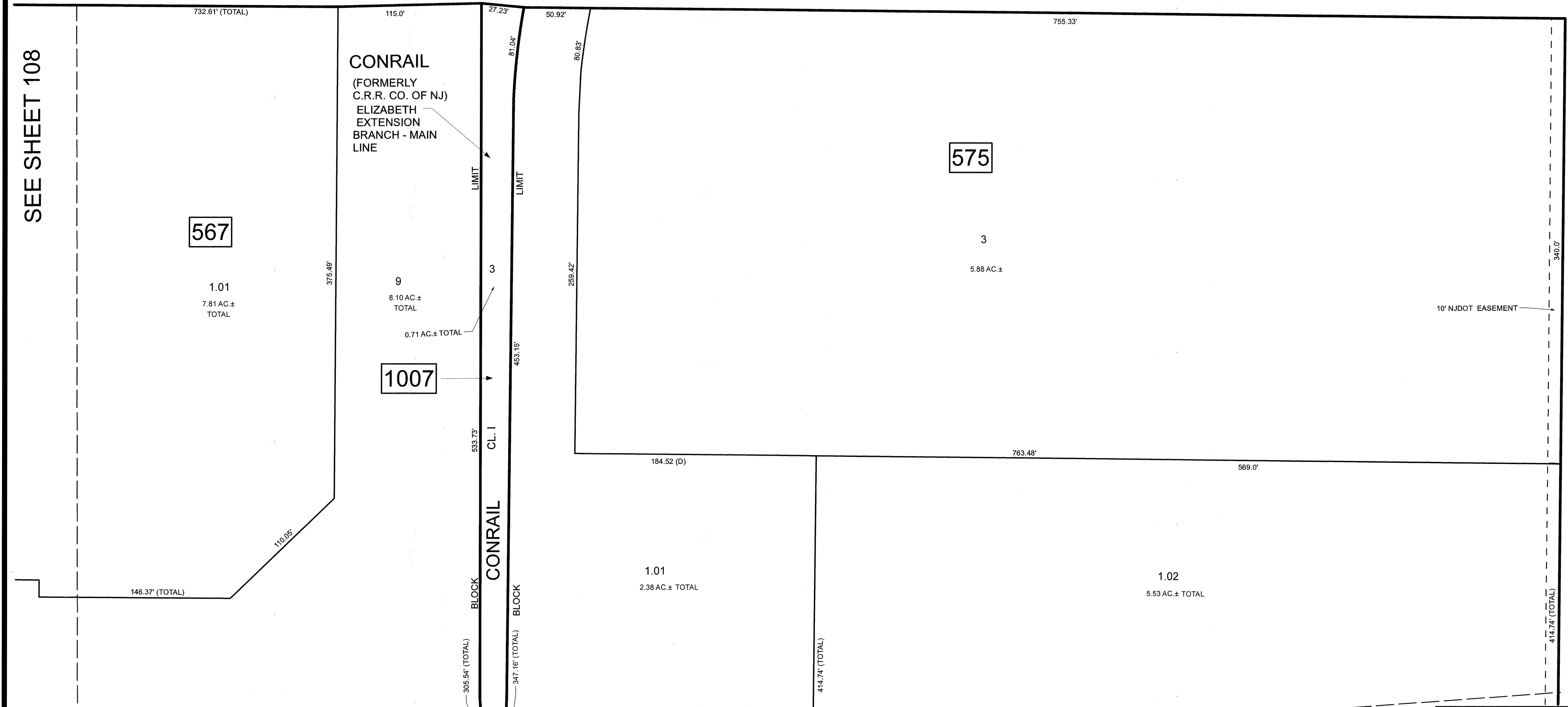


HENRY STREET

FAIRMOUNT AVENUE

CONRAIL (FORMERLY C.R.R. CO. OF NJ) ELIZABETH EXTENSION BRANCH - MAIN LINE

10' NJDOT EASEMENT



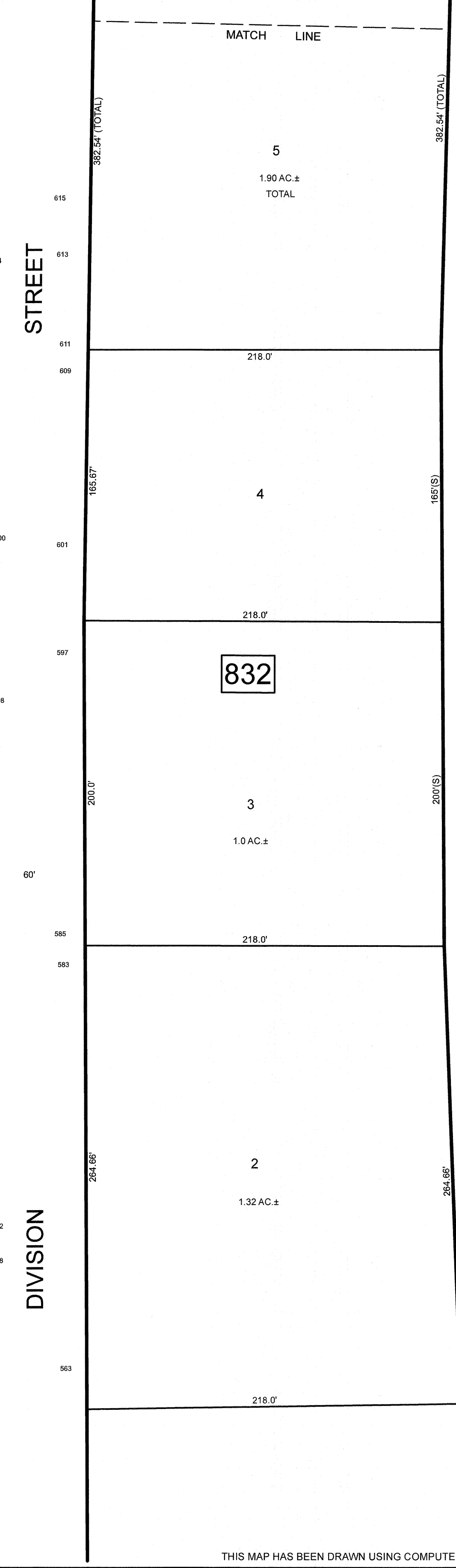
SEE SHEET 108

SEE SHEET 127

SEE SHEET 128

CONRAIL (FORMERLY C.R.R. CO. OF NJ) ELIZABETH EXTENSION BRANCH - MAIN LINE

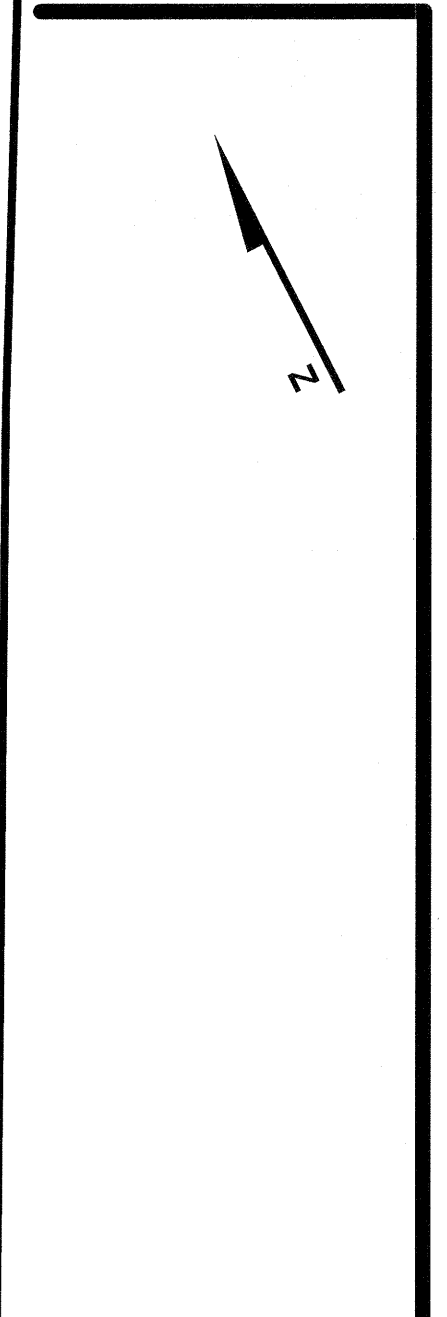
10' NJDOT EASEMENT



SEE SHEET 132

CONRAIL (FORMERLY C.R.R. CO. OF NJ) ELIZABETH EXTENSION BRANCH - MAIN LINE


10' NJDOT EASEMENT



SEE SHEET 132

THIS MAP HAS BEEN DRAWN USING COMPUTER AIDED DRAFTING/DESIGN (CAD/D)

NEW JERSEY DEPARTMENT OF THE TREASURY  
DIVISION OF TAXATION  
APPROVED AS A TAX MAP PURSUANT TO THE AUTHORITY OF  
N.J.S.A. 84:1-18 AND N.J.S.A. 84:2B-1  
FOR THE DIRECTOR, DIVISION OF TAXATION



DATE MAR 3 1 2022 SERIAL NO. 1129

**TAX MAP**  
**CITY OF ELIZABETH**  
UNION COUNTY NEW JERSEY  
SCALE: 1" = 50' FEB. 15, 2019  
**GLEN J. LLOYD**  
N.J. PROFESSIONAL LAND SURVEYOR LIC. #GS037598  
MASER CONSULTING PA  
331 NEWMAN SPRINGS ROAD, SUITE 203  
RED BANK, NJ 07701