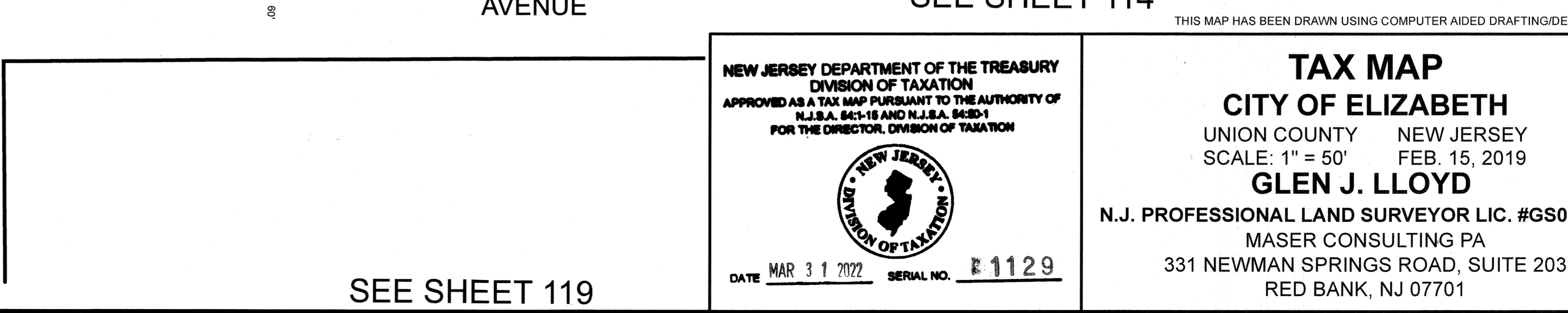
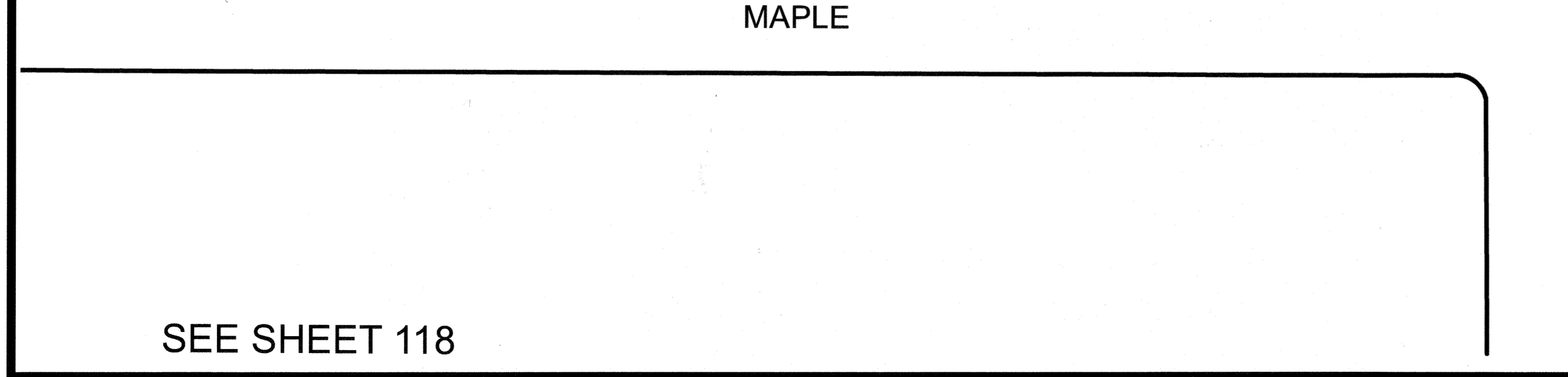
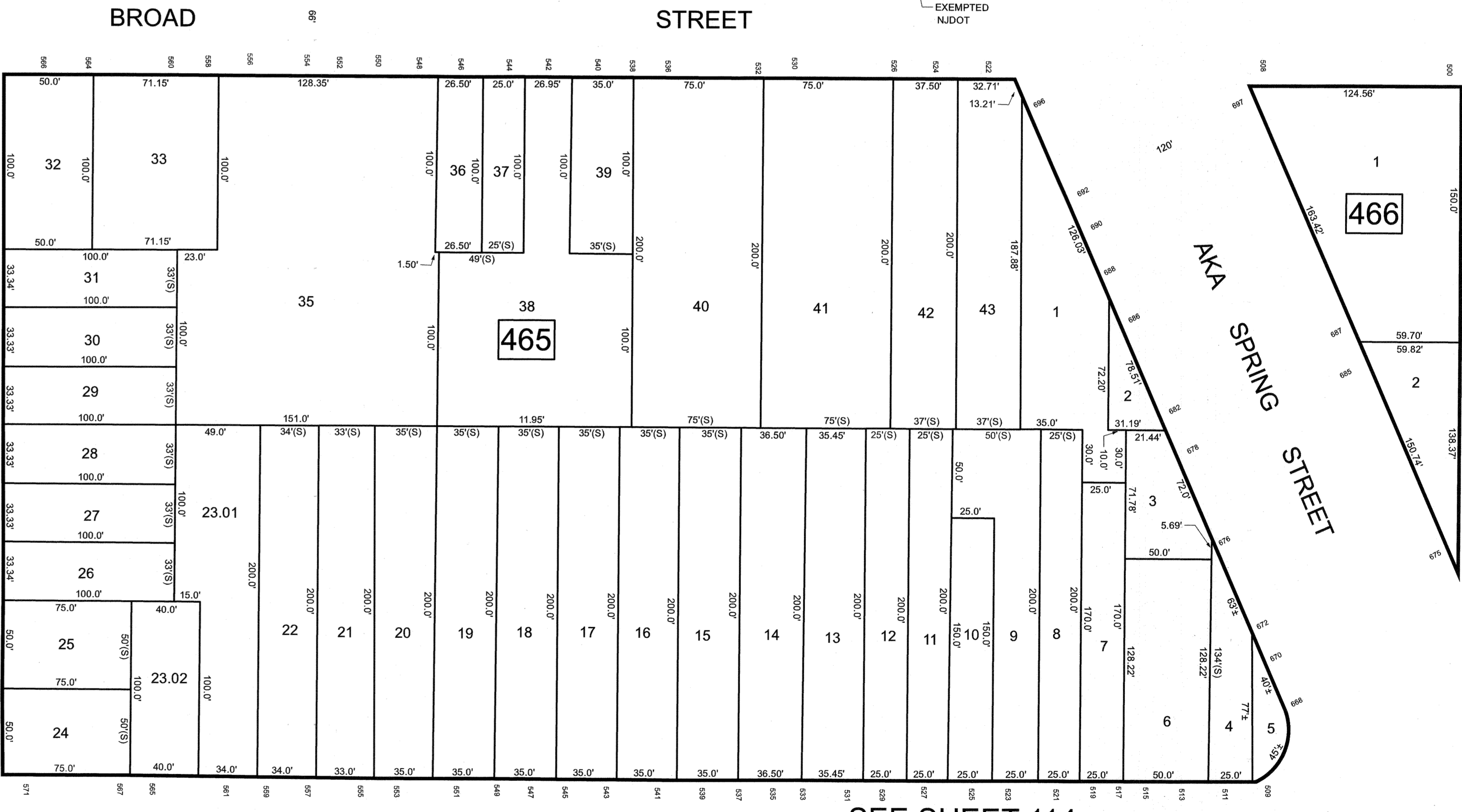
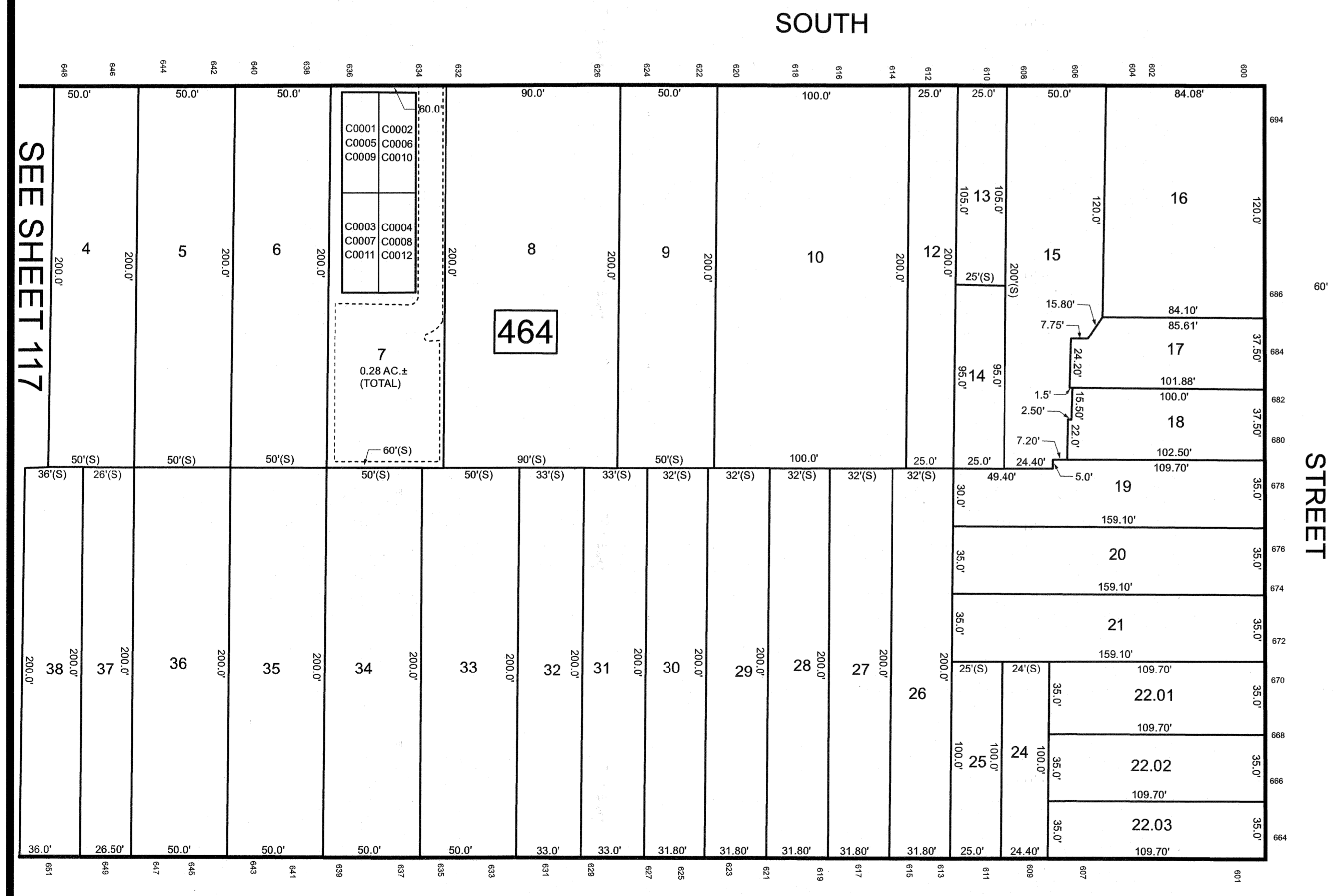


BLOCK	LOT	QUAL	SQ. FT.	FLOOR	UNIT NO.
		C0001	637	1	1
		C0002	420	1	2
		C0003	826	1	3
		C0004	826	1	4
		C0005	637	2	5
		C0006	637	2	6
		C0007	826	2	7
		C0008	826	2	8
		C0009	637	3	9
		C0010	637	3	10
		C0011	826	3	11
		C0012	826	3	12



SEE SHEET 118

SEE SHEET 119

NEW JERSEY DEPARTMENT OF THE TREASURY
DIVISION OF TAXATION
APPROVED AS A TAX MAP PURSUANT TO THE AUTHORITY OF
N.J.S.A. 84:1-16 AND N.J.S.A. 84:30-1
FOR THE DIRECTOR, DIVISION OF TAXATION

DATE MAR 31 2022 SERIAL NO. 1129

THIS MAP HAS BEEN DRAWN USING COMPUTER AIDED DRAFTING/DESIGN (CAD/D)

TAX MAP
CITY OF ELIZABETH
UNION COUNTY NEW JERSEY
SCALE: 1" = 50' FEB. 15, 2019
GLEN J. LLOYD
N.J. PROFESSIONAL LAND SURVEYOR LIC. #G037598
MASER CONSULTING PA
331 NEWMAN SPRINGS ROAD, SUITE 203
RED BANK, NJ 07701