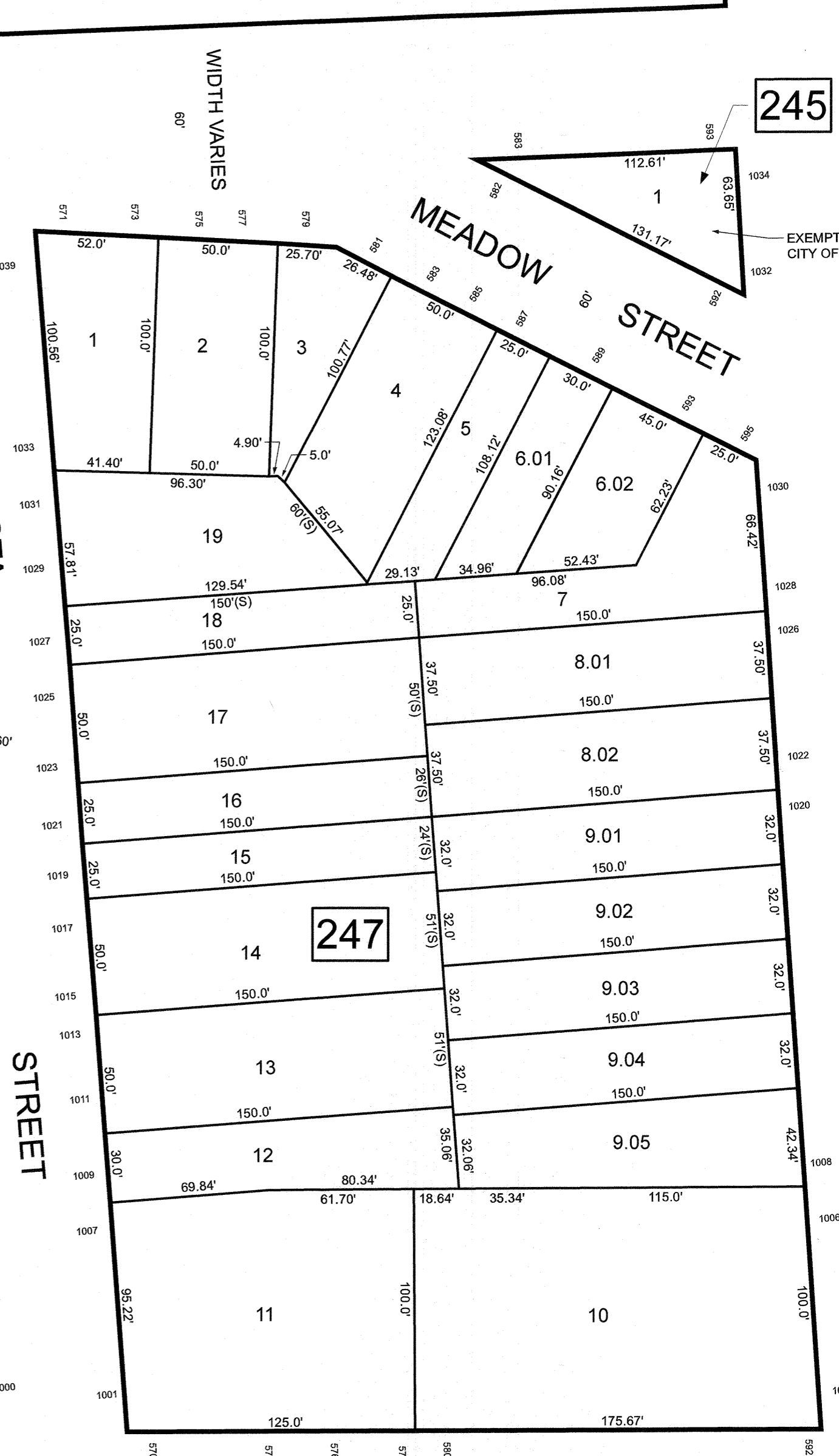
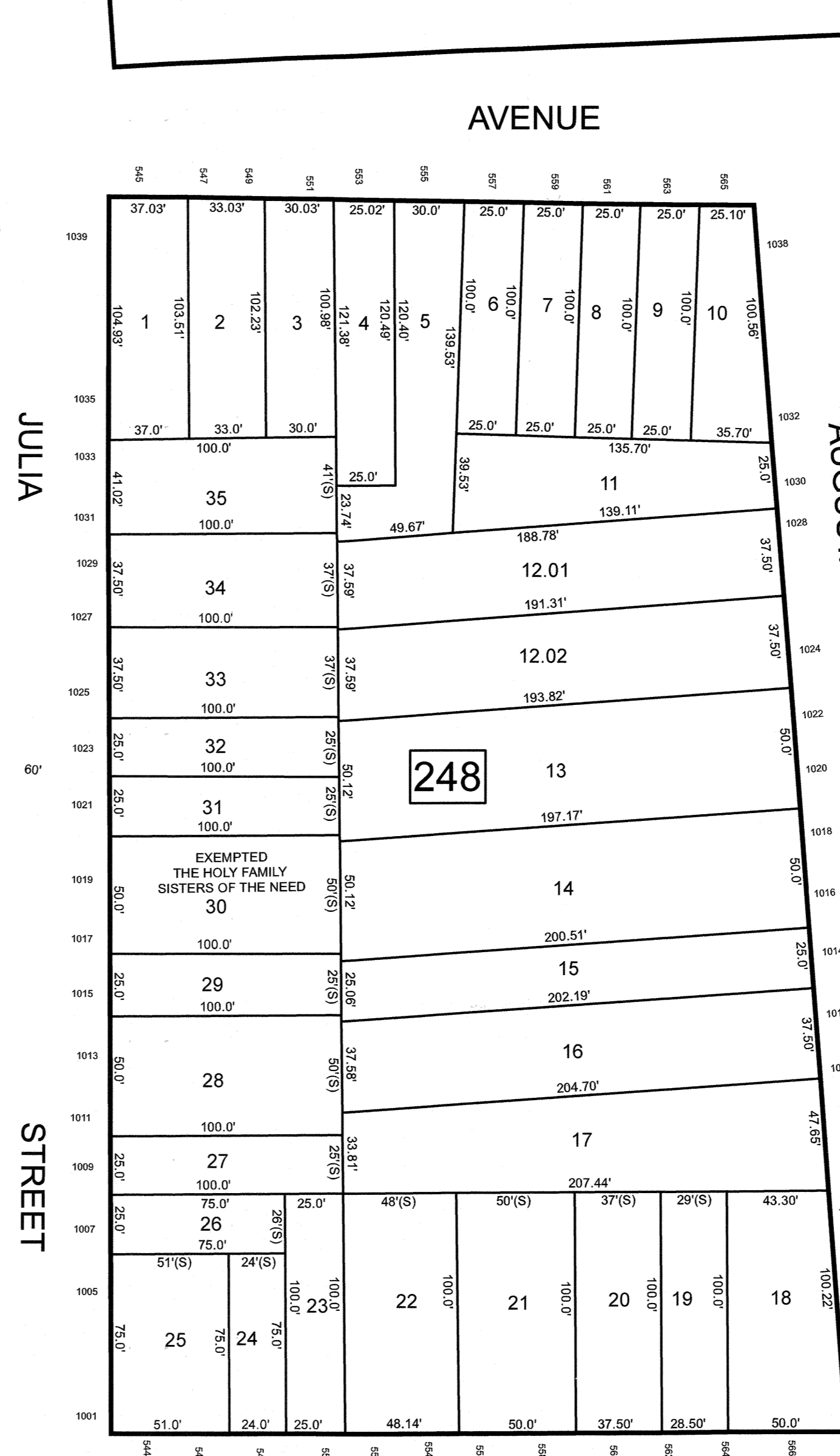
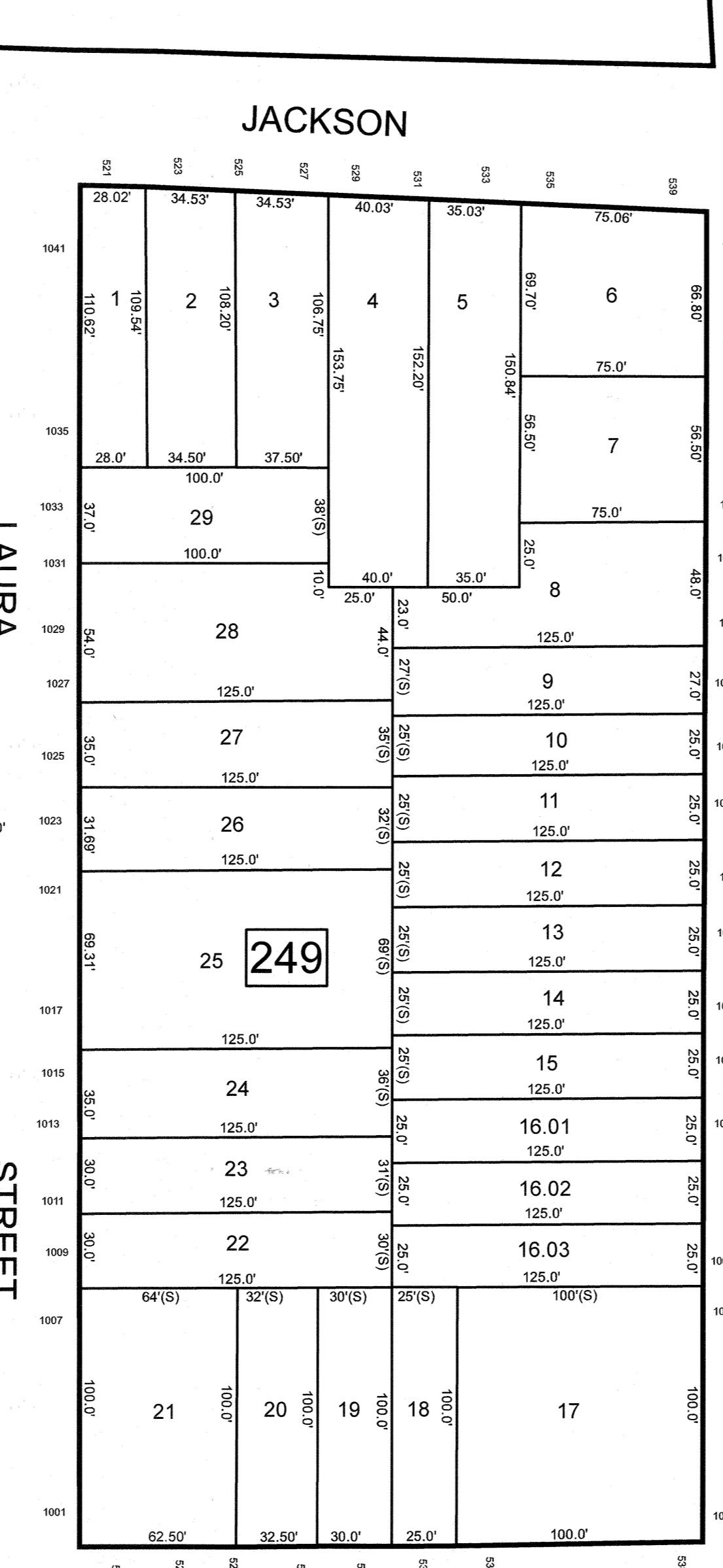
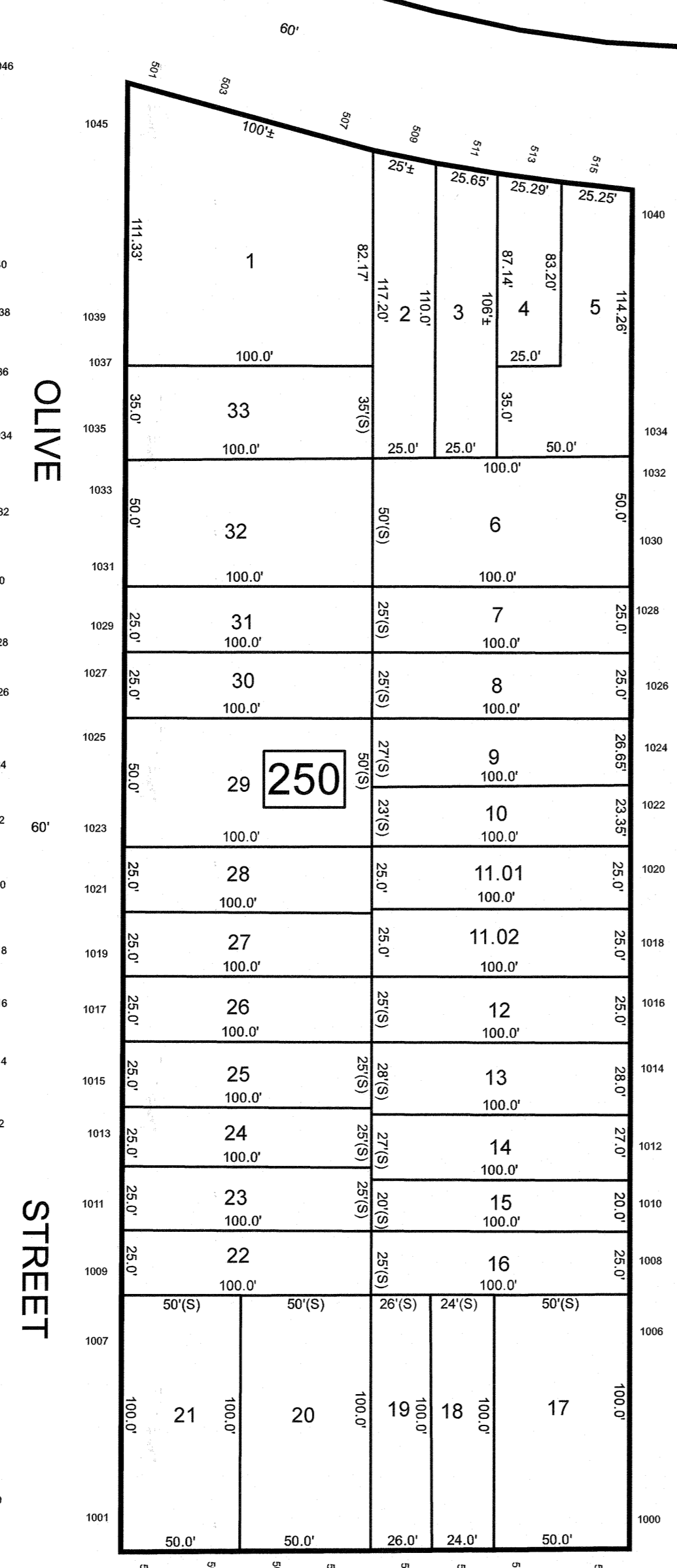
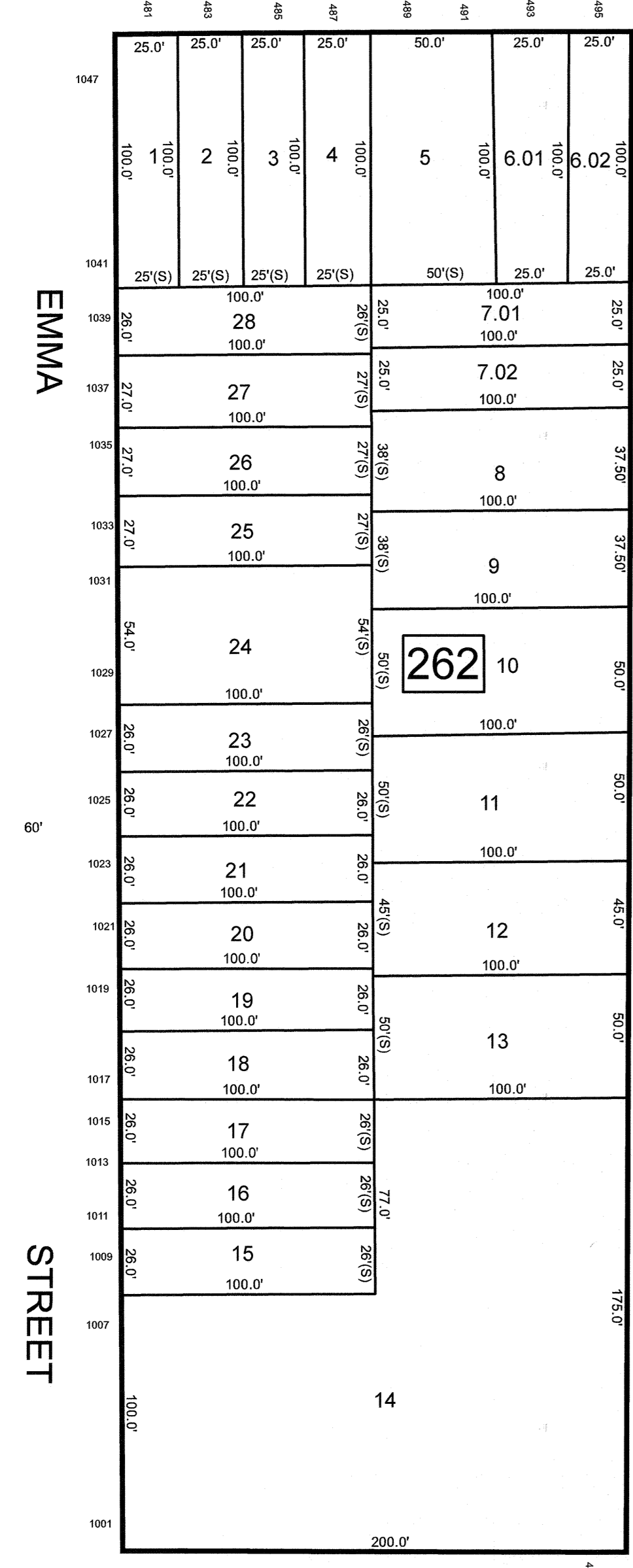
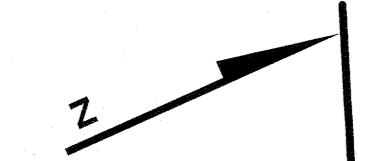


| REVISIONS | | |
|-----------|------|----------|
| DATE | NAME | LIC. NO. |
| | | |
| | | |
| | | |
| | | |

MARY ST.

SEE SHEET 98



245

EXEMPTED CITY OF ELIZ.

SEE SHEET 110

SEE SHEET 99

ROUTE

US

1

&

US

9

AKA

SPRING

STREET

SEE SHEET 127

SEE SHEET 108

THIS MAP HAS BEEN DRAWN USING COMPUTER AIDED DRAFTING/DESIGN (CAD/D)

NEW JERSEY DEPARTMENT OF THE TREASURY
 DIVISION OF TAXATION
 APPROVED AS A TAX MAP PURSUANT TO THE AUTHORITY OF
 N.J.S.A. 84:1-15 AND N.J.S.A. 84:20-1
 FOR THE DIRECTOR, DIVISION OF TAXATION

DATE **MAR 31 2022** SERIAL NO. **1129**

TAX MAP
CITY OF ELIZABETH
 UNION COUNTY NEW JERSEY
 SCALE: 1" = 50' FEB. 15, 2019
GLEN J. LLOYD
 N.J. PROFESSIONAL LAND SURVEYOR LIC. #GS037598
 MASER CONSULTING PA
 331 NEWMAN SPRINGS ROAD, SUITE 203
 RED BANK, NJ 07701