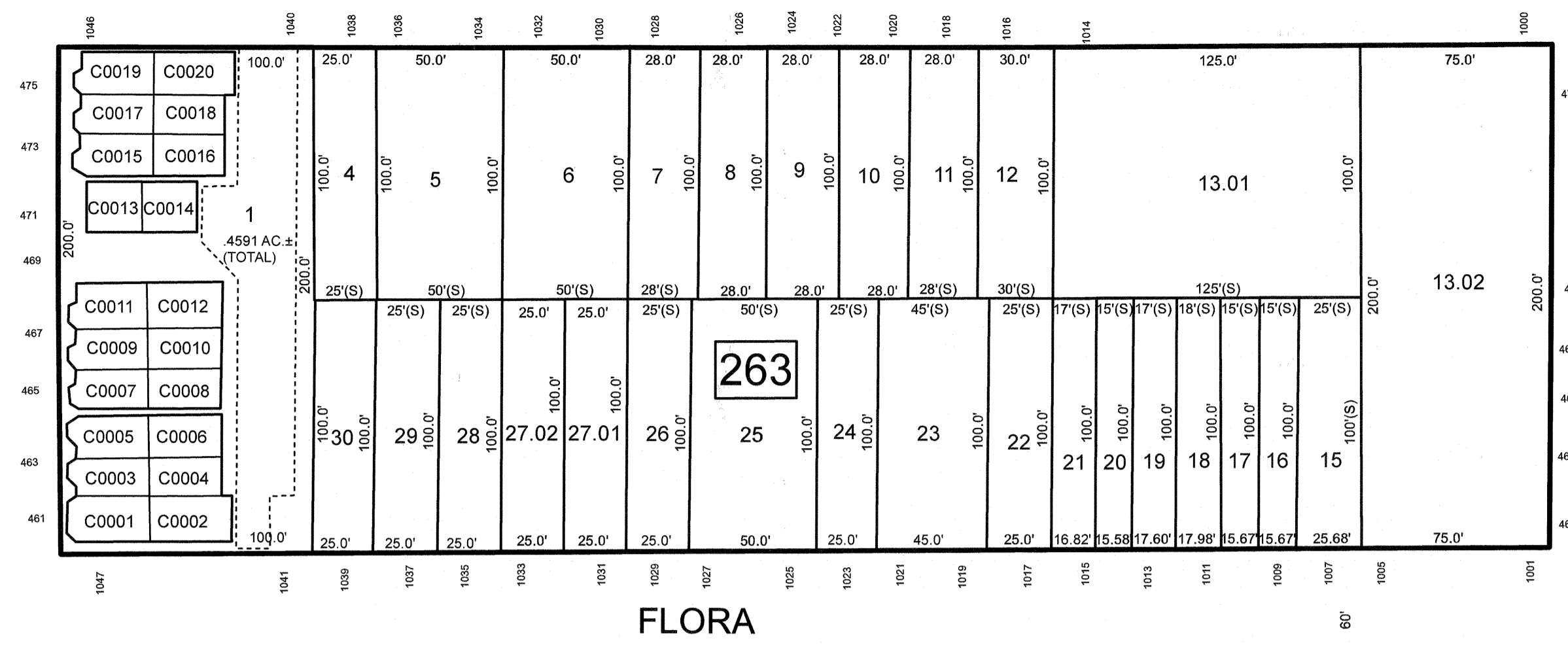
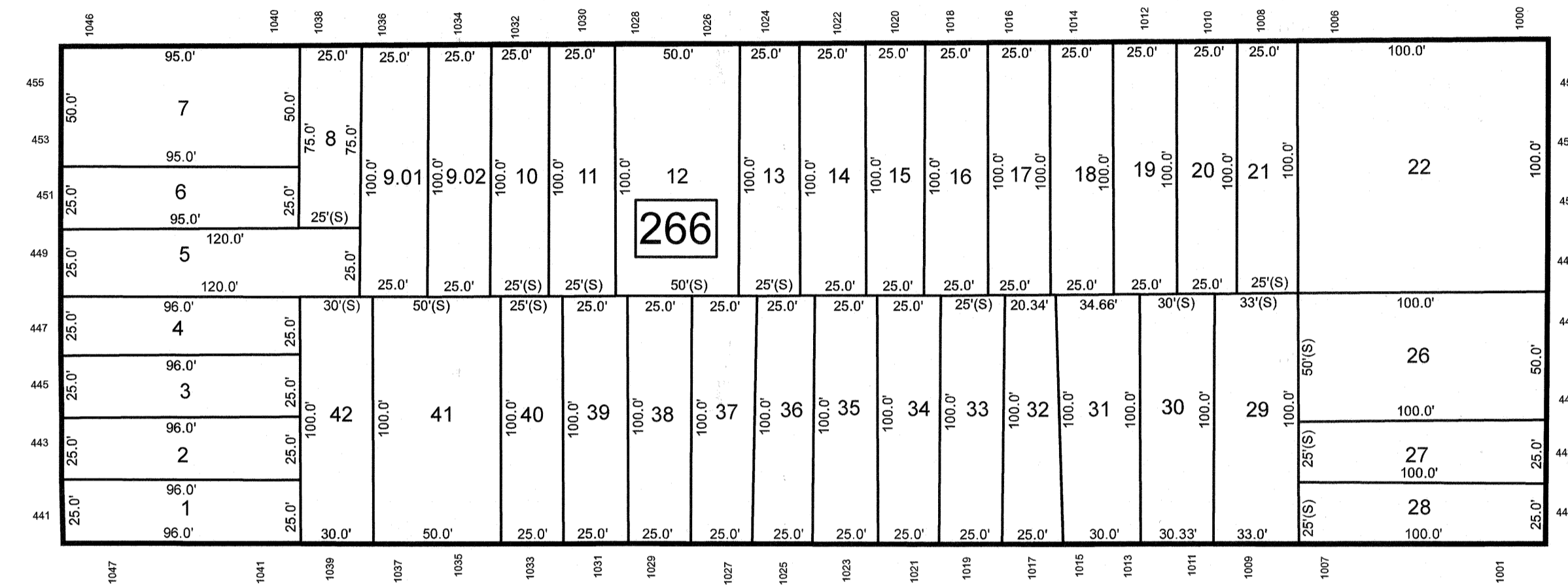


EMMA



FLORA



SPRING STREET

AKA

9

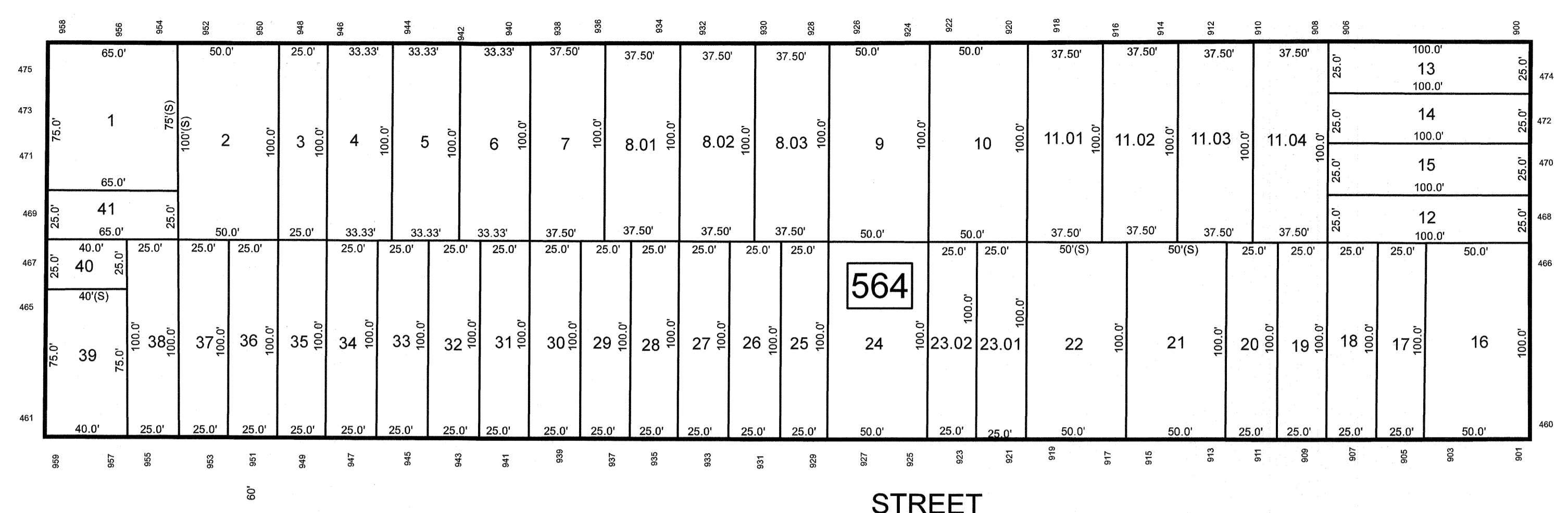
US &

1

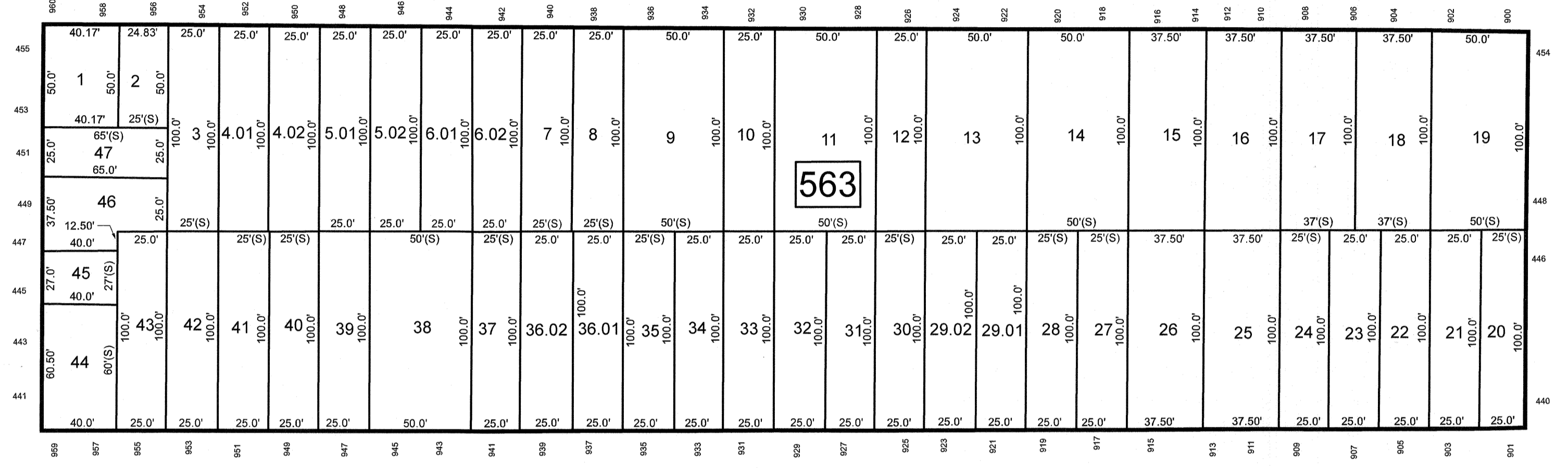
US

ROUTE

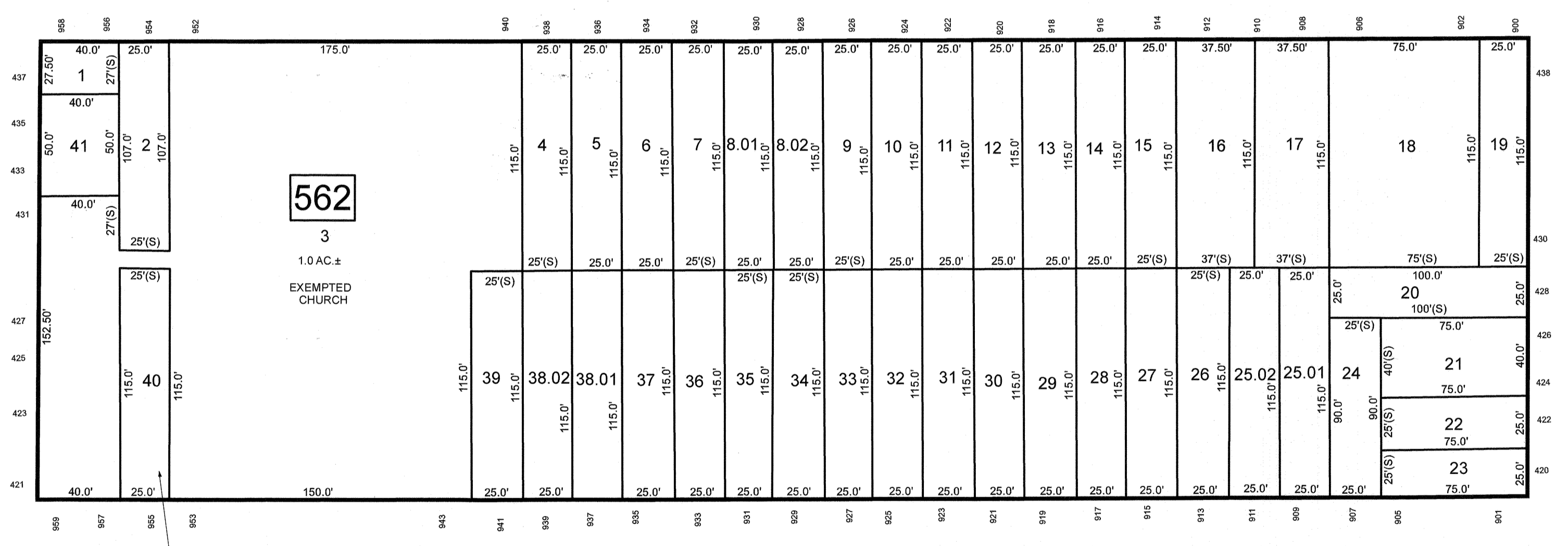
STREET



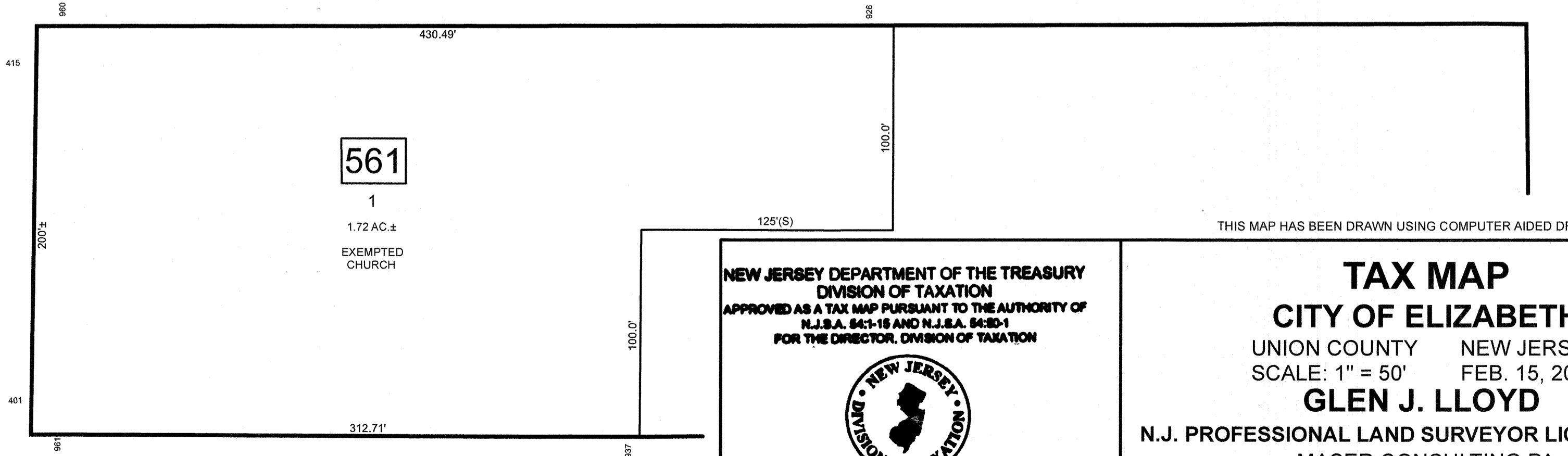
STREET



STREET



STREET



MAGNOLIA

AVENUE

STREET

HENRY

SEE SHEET 126

SEE SHEET 97

STREET

CATHERINE

BLOCK	LOT	QUAL	SQ. FT.	FLOOR	UNIT NO.
263	1	C0001	1,768	0/1/2	1A
		C0002	1,276	0/1/2	1B
		C0003	1,449	0/1/2	2A
		C0004	1,194	0/1/2	2B
		C0005	1,473	0/1/2	3A
		C0006	1,177	0/1/2	3B
		C0007	1,374	0/1/2	4A
		C0008	1,191	0/1/2	4B
		C0009	1,334	0/1/2	5A
		C0010	1,184	0/1/2	5B
		C0011	1,346	0/1/2	6A
		C0012	1,309	0/1/2	6B
		C0013	1,097	0/1	7A
		C0014	1,707	0/1/2/3	7B
		C0015	1,289	0/1/2	8A
		C0016	1,207	0/1/2	8B
		C0017	1,271	0/1/2	9A
		C0018	1,189	0/1/2	9B
		C0019	1,724	0/1/2	10A
		C0020	1,270	0/1/2	10B

SEE SHEET 111

REVISIONS		
DATE	NAME	LIC. NO.

NEW JERSEY DEPARTMENT OF THE TREASURY  
 DIVISION OF TAXATION  
 APPROVED AS A TAX MAP PURSUANT TO THE AUTHORITY OF  
 N.J.S.A. 84:1-18 AND N.J.S.A. 84:2D-1  
 FOR THE DIRECTOR, DIVISION OF TAXATION

DATE MAR 31 2022 SERIAL NO. 1129

THIS MAP HAS BEEN DRAWN USING COMPUTER AIDED DRAFTING/DESIGN (CADD)

**TAX MAP**  
**CITY OF ELIZABETH**  
 UNION COUNTY NEW JERSEY  
 SCALE: 1" = 50' FEB. 15, 2019  
**GLEN J. LLOYD**  
 N.J. PROFESSIONAL LAND SURVEYOR LIC. #GS037598  
 MASER CONSULTING PA  
 331 NEWMAN SPRINGS ROAD, SUITE 203  
 RED BANK, NJ 07701