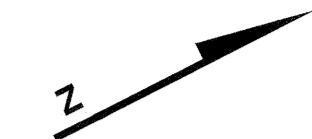
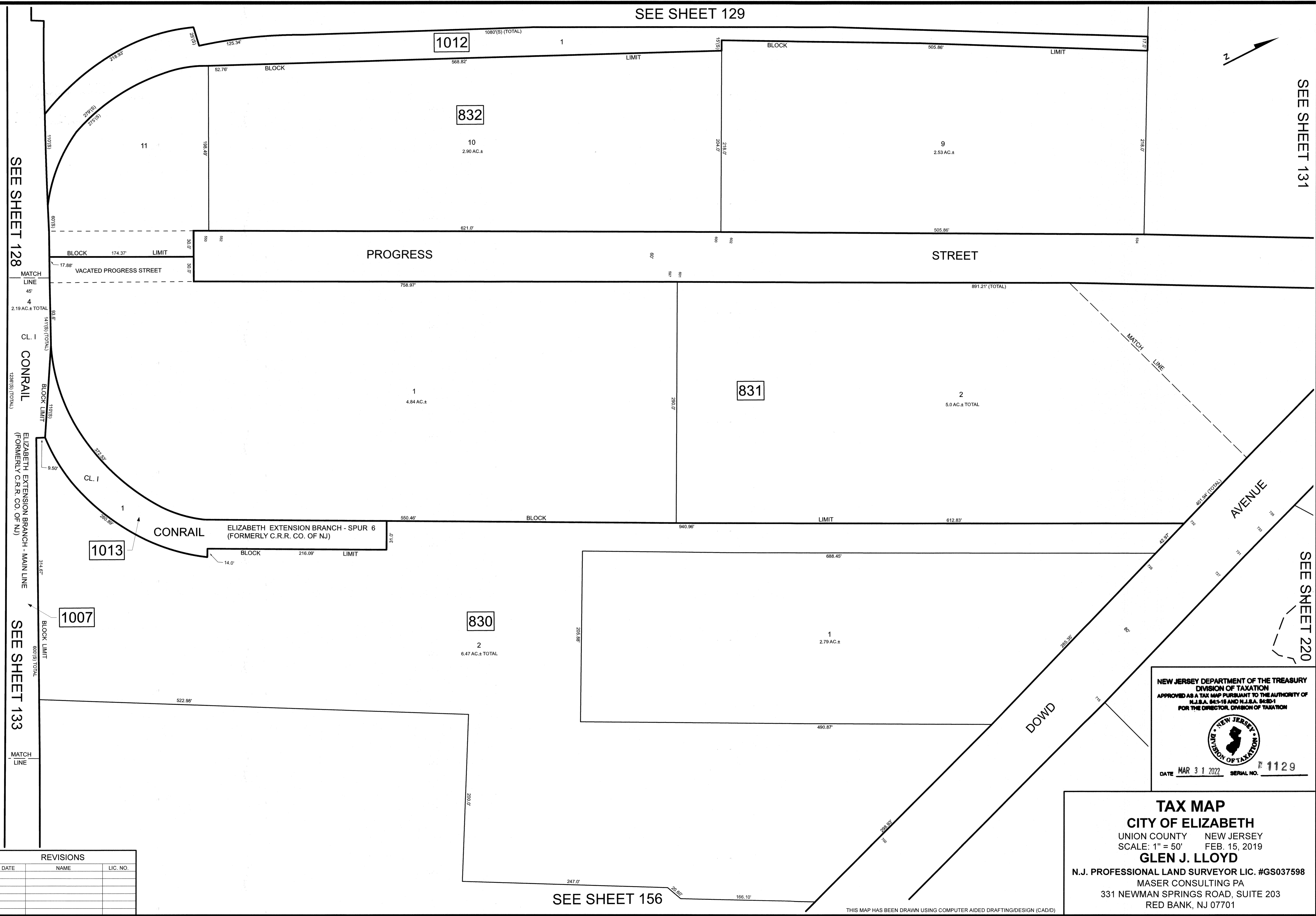


SEE SHEET 129



SEE SHEET 131



SEE SHEET 128

CONRAIL

ELIZABETH EXTENSION BRANCH - MAIN LINE (FORMERLY C.R.R. CO. OF NJ)

SEE SHEET 133

REVISIONS		
DATE	NAME	LIC. NO.

NEW JERSEY DEPARTMENT OF THE TREASURY  
 DIVISION OF TAXATION  
 APPROVED AS A TAX MAP PURSUANT TO THE AUTHORITY OF  
 N.J.S.A. 84:1-16 AND N.J.S.A. 84:2B-1  
 FOR THE DIRECTOR, DIVISION OF TAXATION

DATE MAR 31 2022 SERIAL NO. 1129

**TAX MAP**  
**CITY OF ELIZABETH**  
 UNION COUNTY NEW JERSEY  
 SCALE: 1" = 50' FEB. 15, 2019  
**GLEN J. LLOYD**  
 N.J. PROFESSIONAL LAND SURVEYOR LIC. #GS037598  
 MASER CONSULTING PA  
 331 NEWMAN SPRINGS ROAD, SUITE 203  
 RED BANK, NJ 07701

SEE SHEET 156

THIS MAP HAS BEEN DRAWN USING COMPUTER AIDED DRAFTING/DESIGN (CAD/D)