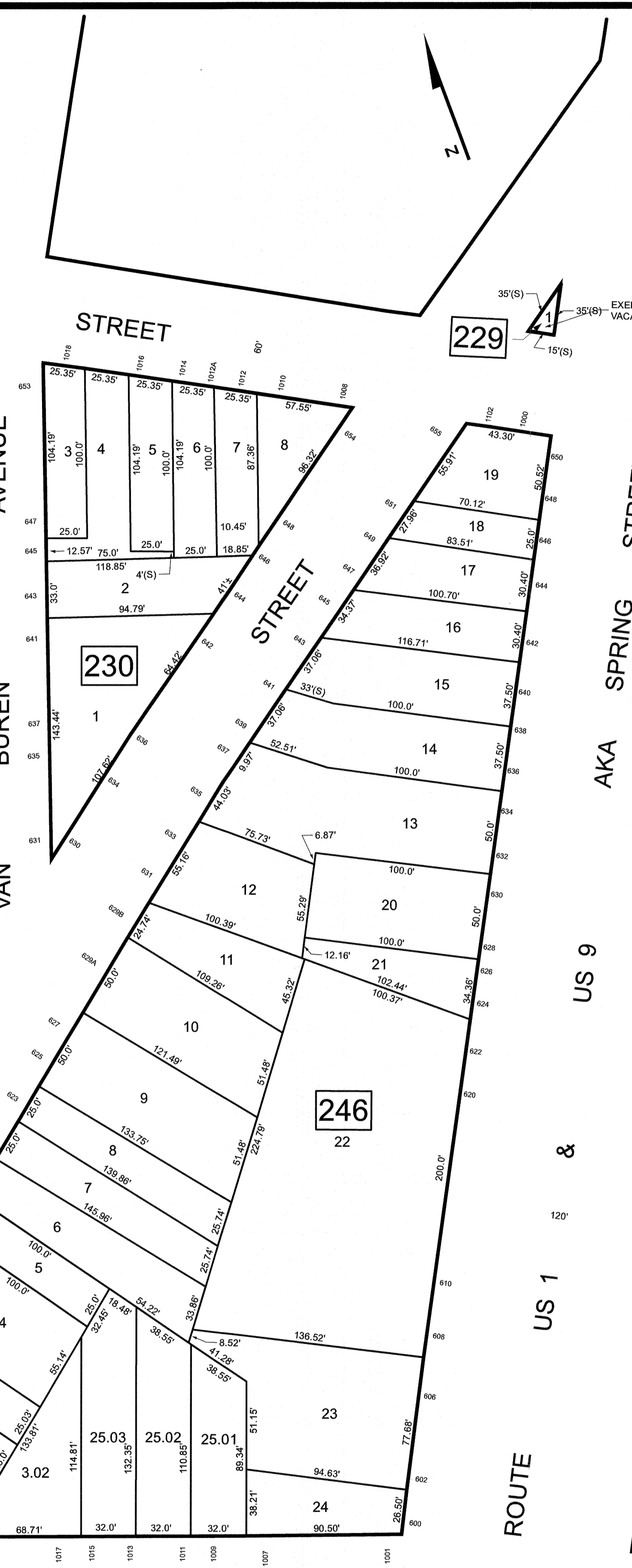
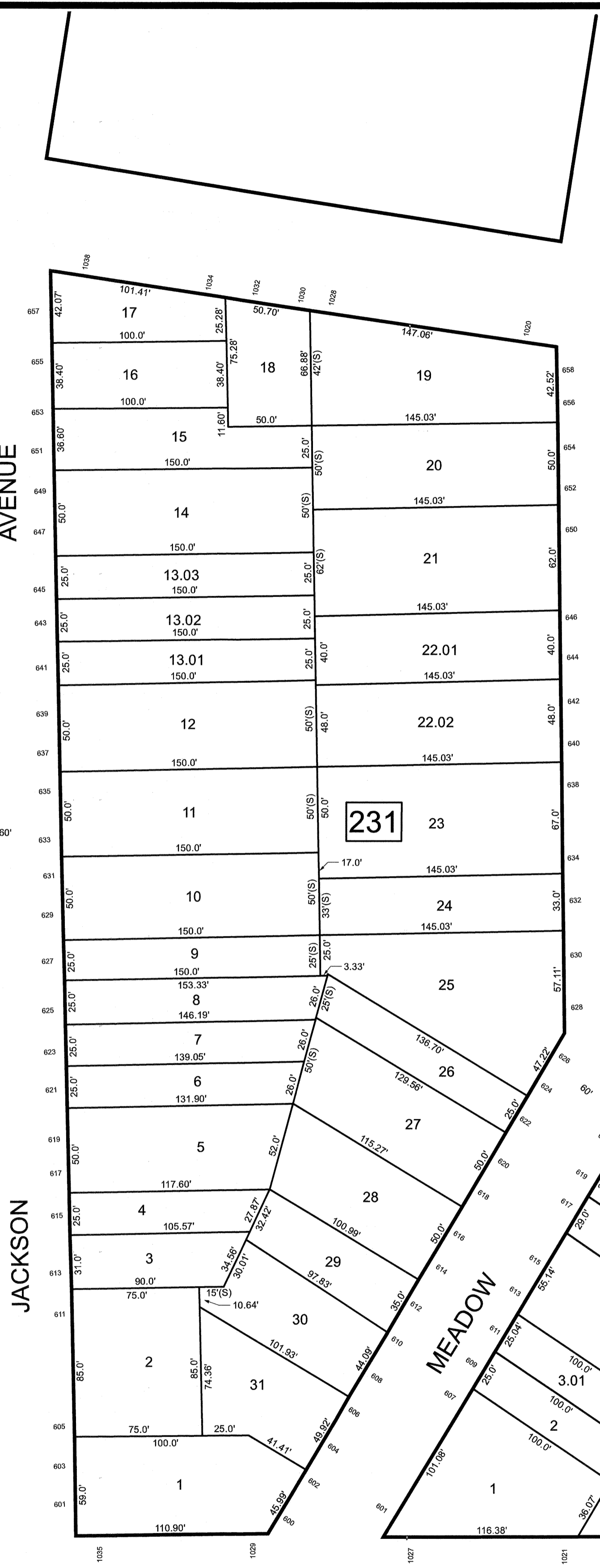
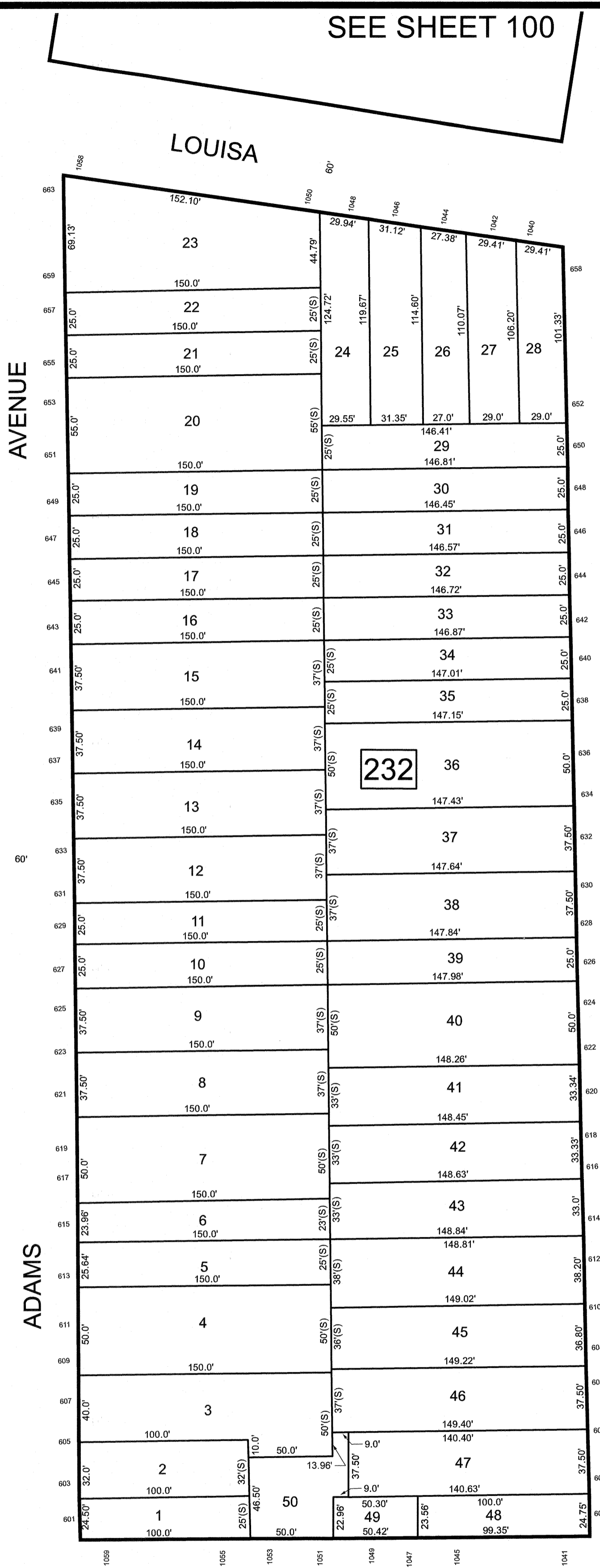
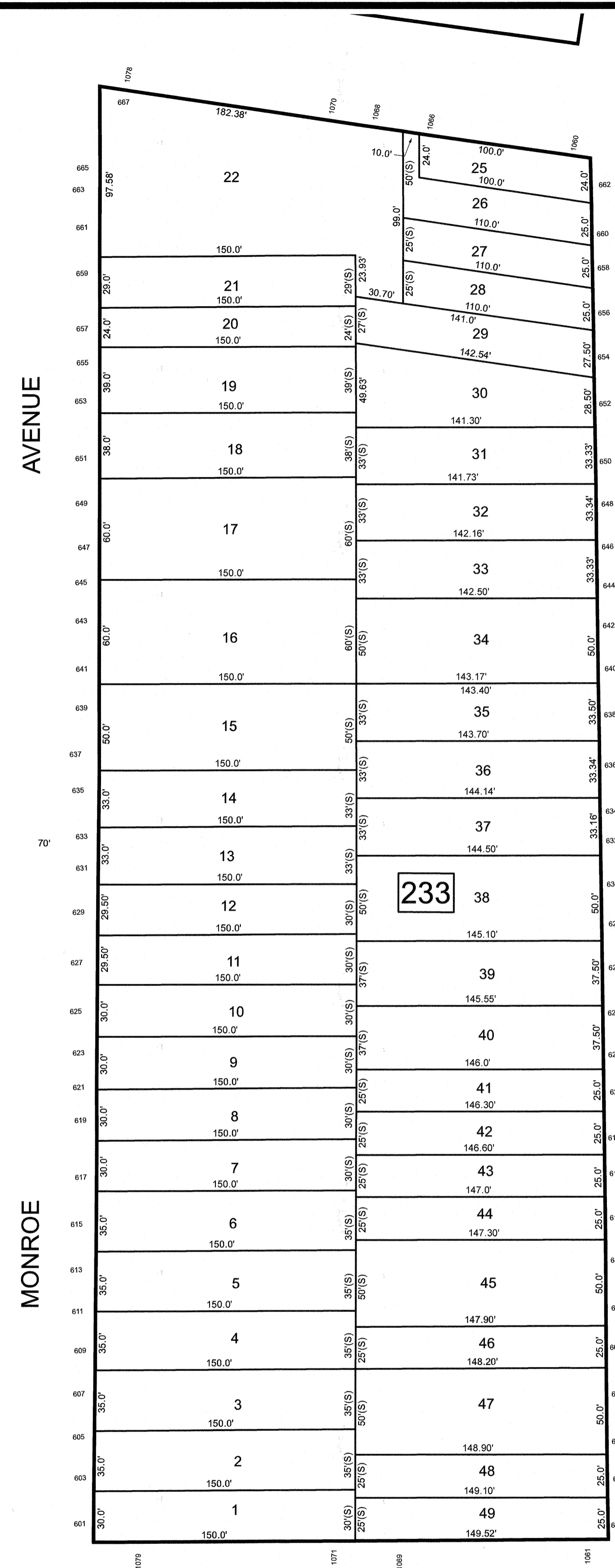


SEE SHEET 76



SEE SHEET 107


SEE SHEET 108

REVISIONS		
DATE	NAME	LIC. NO.

SEE SHEET 98

SEE SHEET 109

NEW JERSEY DEPARTMENT OF THE TREASURY  
 DIVISION OF TAXATION  
 APPROVED AS A TAX MAP PURSUANT TO THE AUTHORITY OF  
 N.J.S.A. 54:1-15 AND N.J.S.A. 54:30-1  
 FOR THE DIRECTOR, DIVISION OF TAXATION



DATE **MAR 31 2022** SERIAL NO. **1129**

**TAX MAP**  
**CITY OF ELIZABETH**  
 UNION COUNTY NEW JERSEY  
 SCALE: 1" = 50' FEB. 15, 2019  
**GLEN J. LLOYD**  
 N.J. PROFESSIONAL LAND SURVEYOR LIC. #GS037598  
 MASER CONSULTING PA  
 331 NEWMAN SPRINGS ROAD, SUITE 203  
 RED BANK, NJ 07701

THIS MAP HAS BEEN DRAWN USING COMPUTER AIDED DRAFTING/DESIGN (CAD/D)