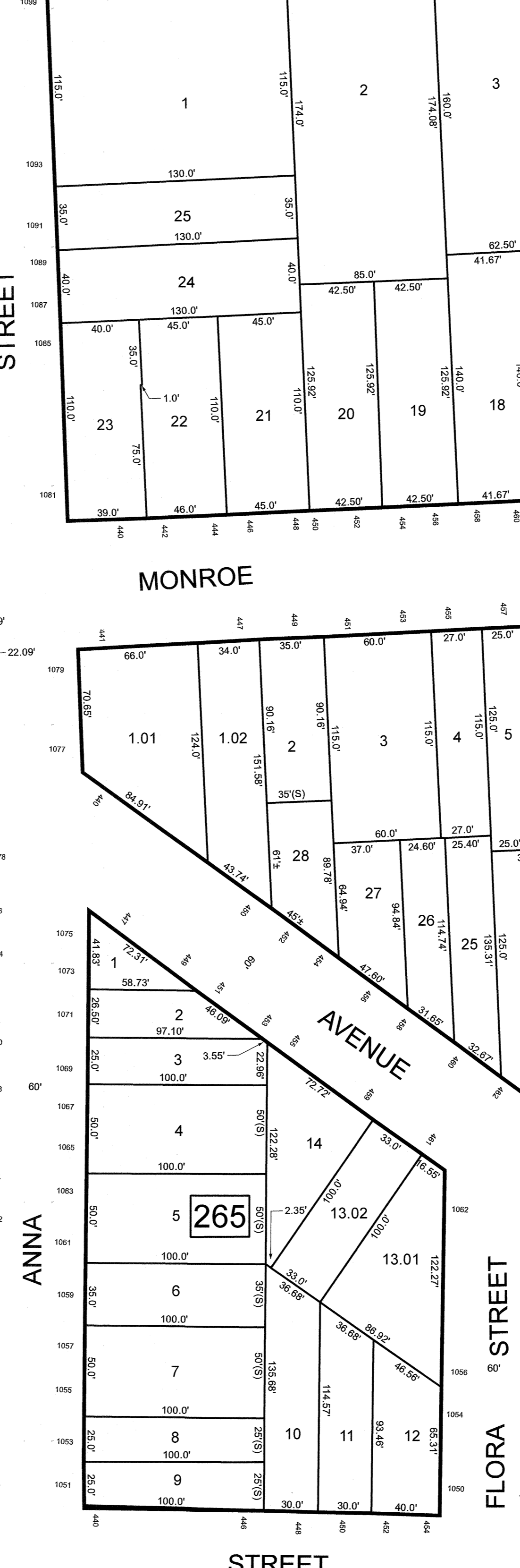
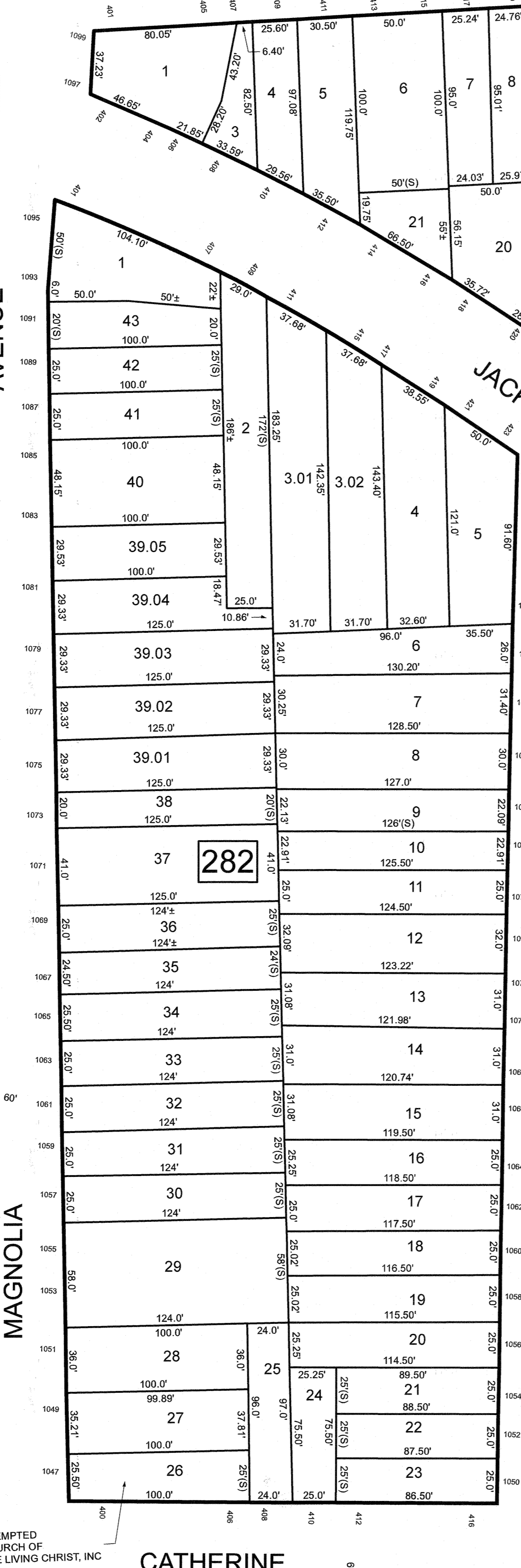
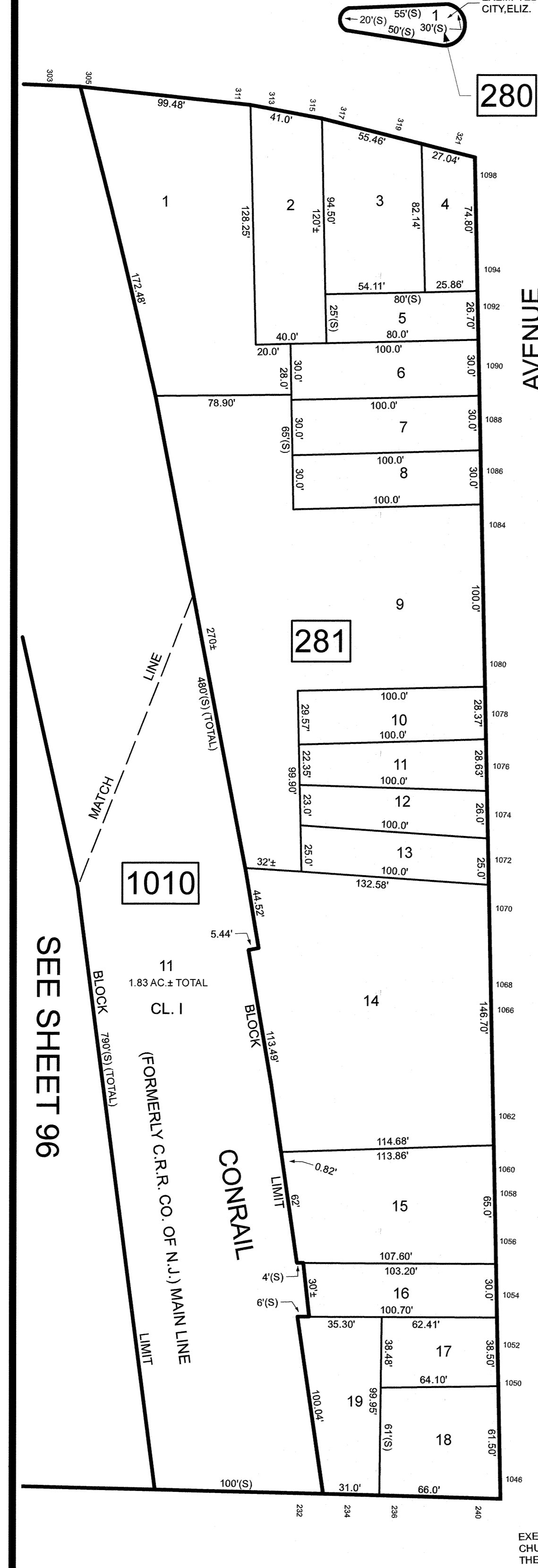


SEE SHEET 78

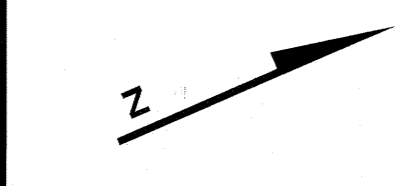
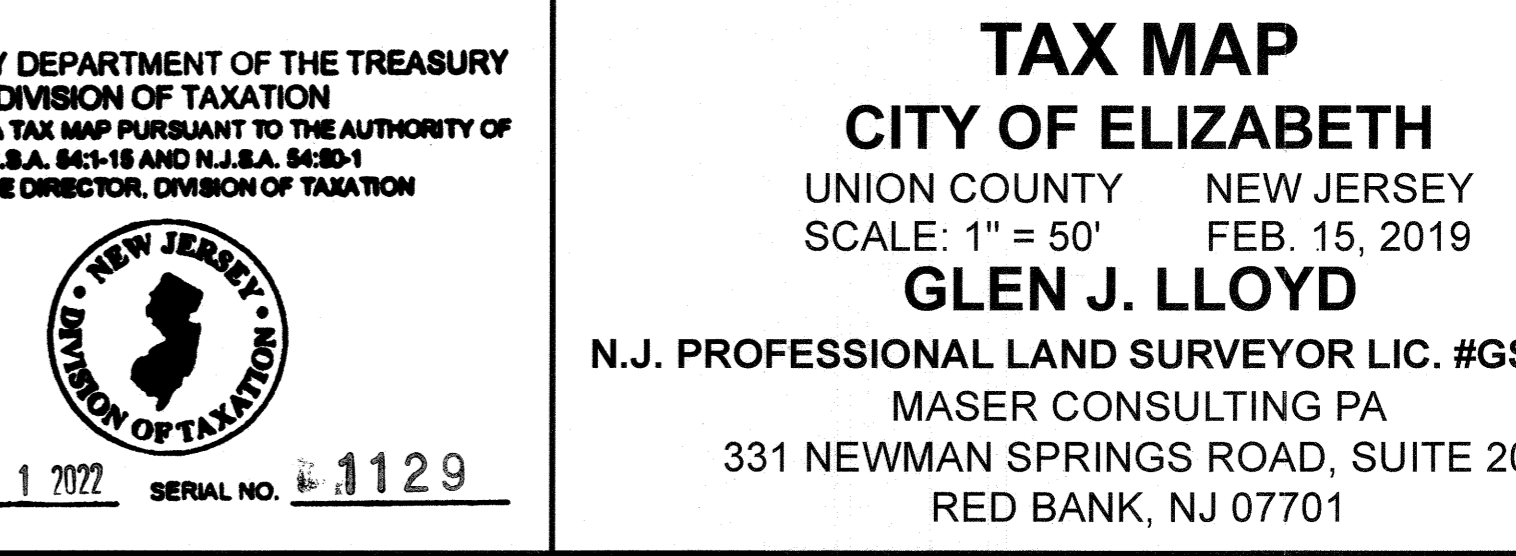
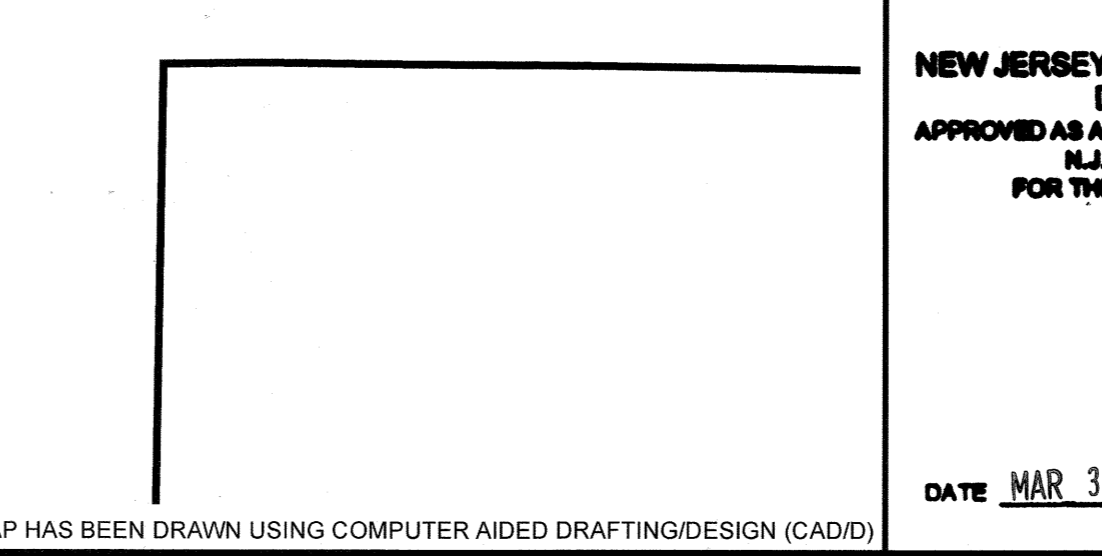
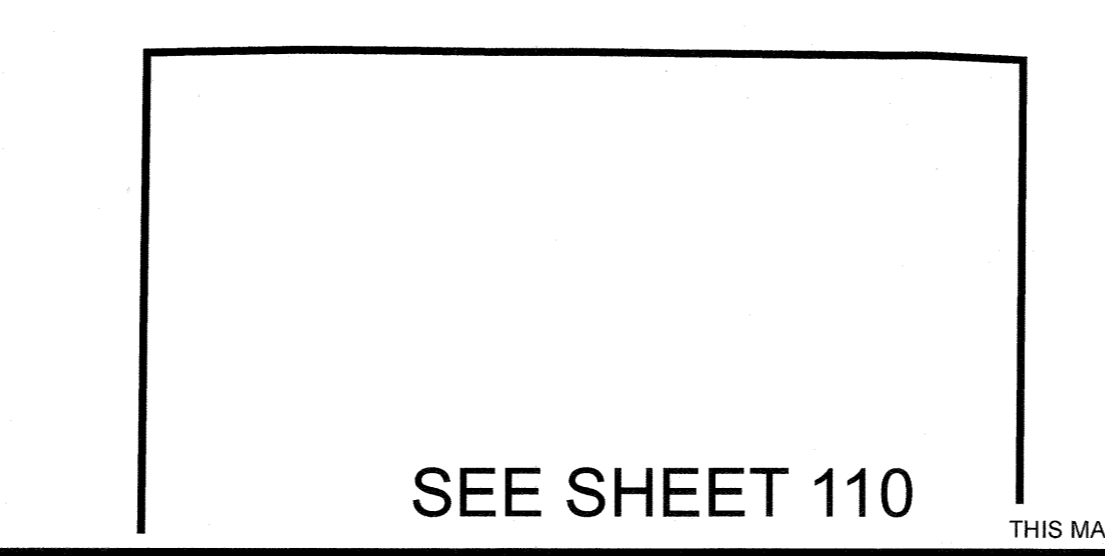
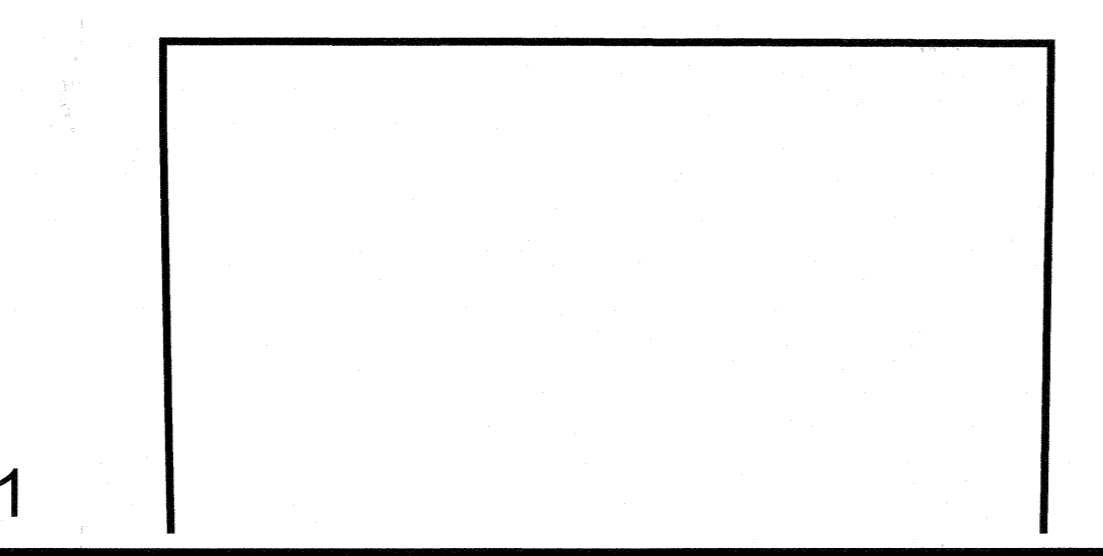
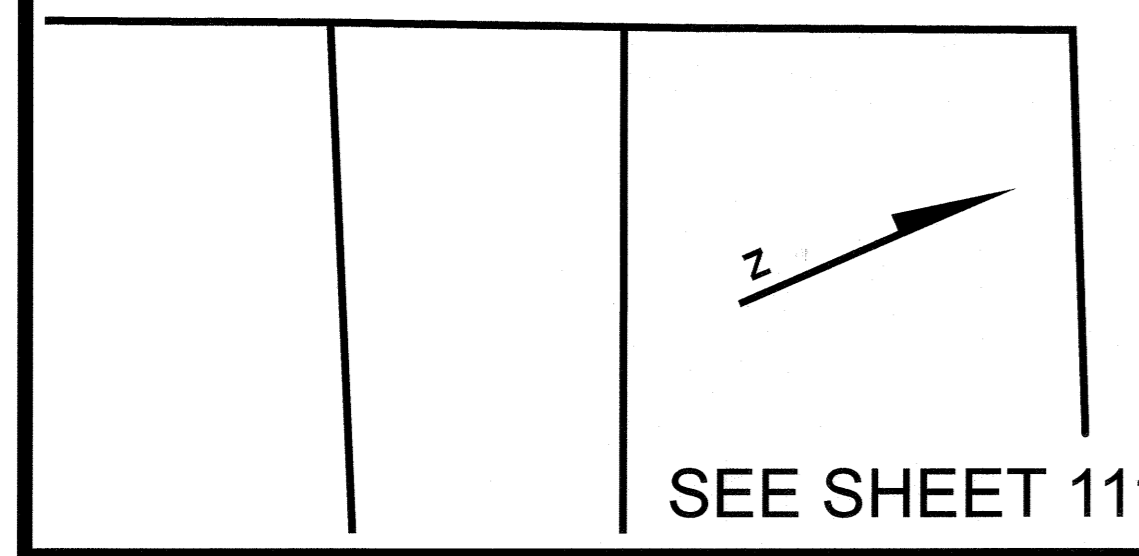
SEE SHEET 79

REVISIONS		
DATE	NAME	LIC. NO.



SEE SHEET 78

SEE SHEET 98



SEE SHEET 111

SEE SHEET 110

NEW JERSEY DEPARTMENT OF THE TREASURY
 DIVISION OF TAXATION
 APPROVED AS A TAX MAP PURSUANT TO THE AUTHORITY OF
 N.J.A.C. 17:27 AND N.J.A.C. 17:28
 FOR THE DIRECTOR, DIVISION OF TAXATION

DATE MAR 31 2022 SERIAL NO. 1129

TAX MAP
CITY OF ELIZABETH
 UNION COUNTY NEW JERSEY
 SCALE: 1" = 50' FEB. 15, 2019
GLEN J. LLOYD
 N.J. PROFESSIONAL LAND SURVEYOR LIC. #G037598
 MASER CONSULTING PA
 331 NEWMAN SPRINGS ROAD, SUITE 203
 RED BANK, NJ 07701

THIS MAP HAS BEEN DRAWN USING COMPUTER AIDED DRAFTING/DESIGN (CAD/D)