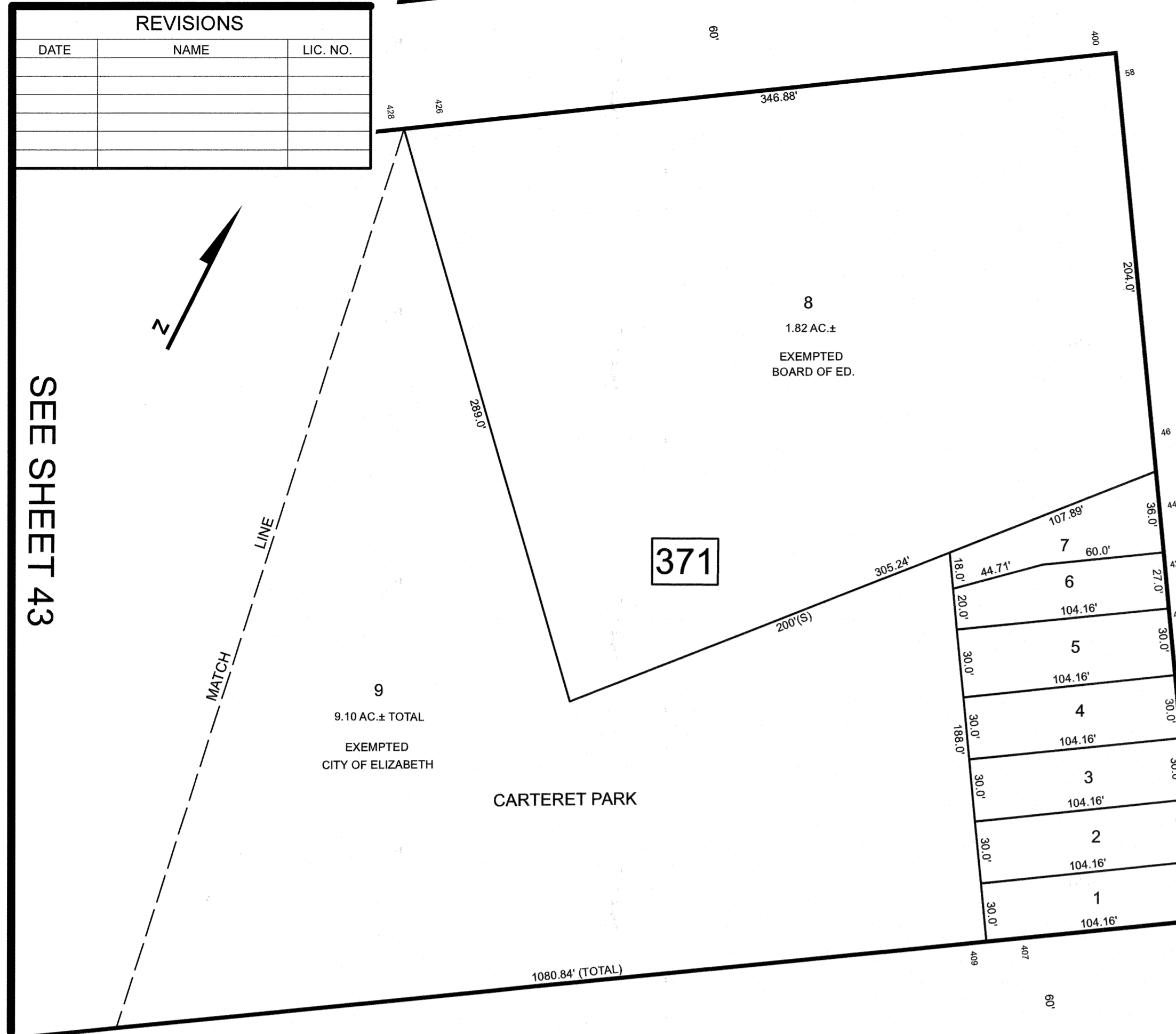


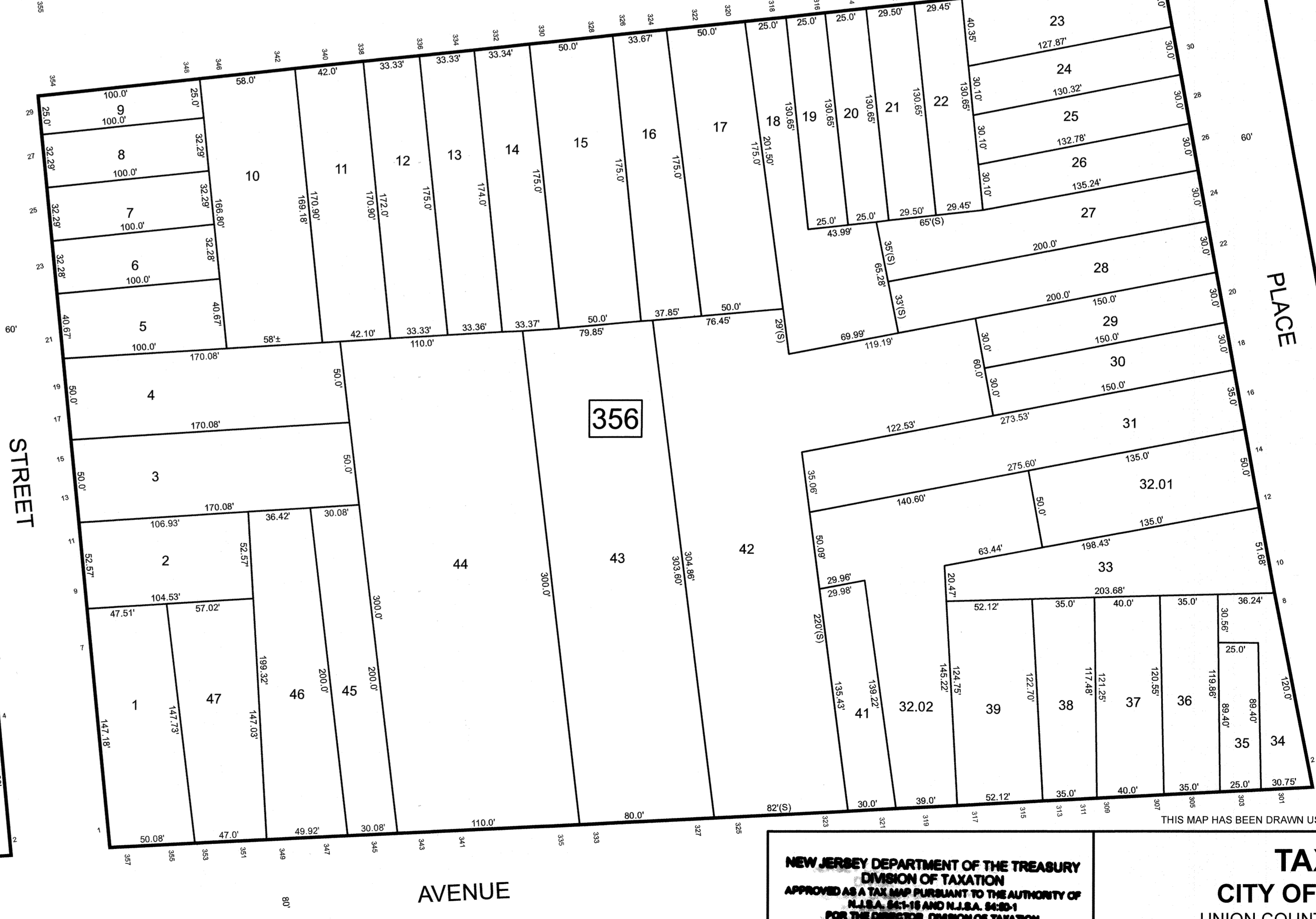
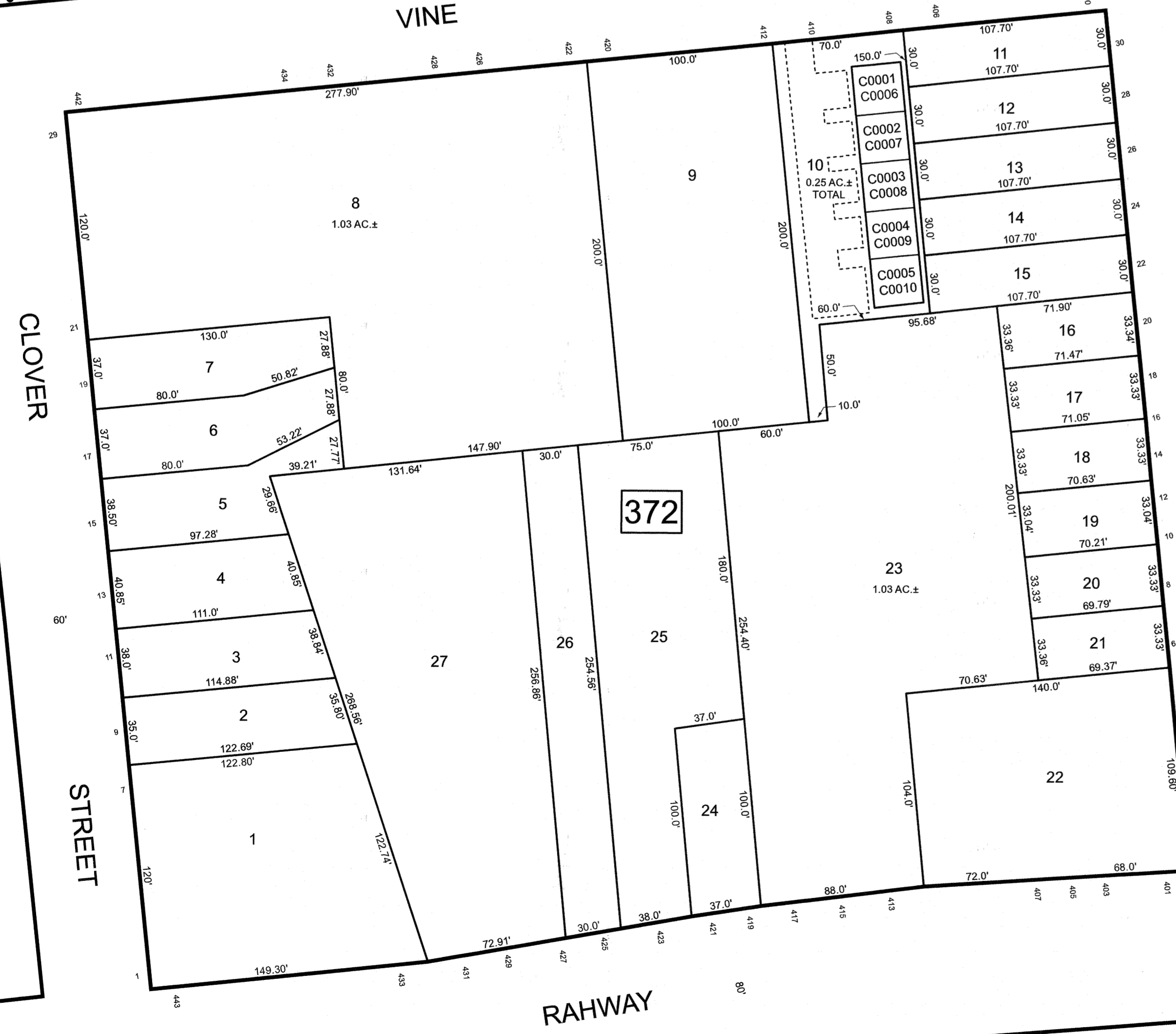
REVISIONS		
DATE	NAME	LIC. NO.



SEE SHEET 43



BLOCK	LOT	QUAL	SQ. FT.	FLOOR	UNIT NO.
372	10	C0001	565.4	1	1A
		C0002	565.4	1	1B
		C0003	565.4	1	1C
		C0004	565.4	1	1D
		C0005	549.8	1	1E
		C0006	578.5	2	2A
		C0007	578.5	2	2B
		C0008	578.5	2	2C
		C0009	578.5	2	2D
		C0010	562.9	2	2E



SEE SHEET 50

SEE SHEET 47

STREET

CLOVER

RAHWAY

NEW JERSEY DEPARTMENT OF THE TREASURY
DIVISION OF TAXATION
APPROVED AS A TAX MAP PURSUANT TO THE AUTHORITY OF
N.J.S.A. 54:1-18 AND N.J.S.A. 54:25-1
FOR THE DIRECTOR, DIVISION OF TAXATION



DATE MAR 31 2022 SERIAL NO. 1129

TAX MAP
CITY OF ELIZABETH
UNION COUNTY NEW JERSEY
SCALE: 1" = 50'
FEB. 15, 2019
GLEN J. LLOYD
N.J. PROFESSIONAL LAND SURVEYOR LIC. #GS037598
MASER CONSULTING PA
331 NEWMAN SPRINGS ROAD, SUITE 203
RED BANK, NJ 07701

SEE SHEET 48