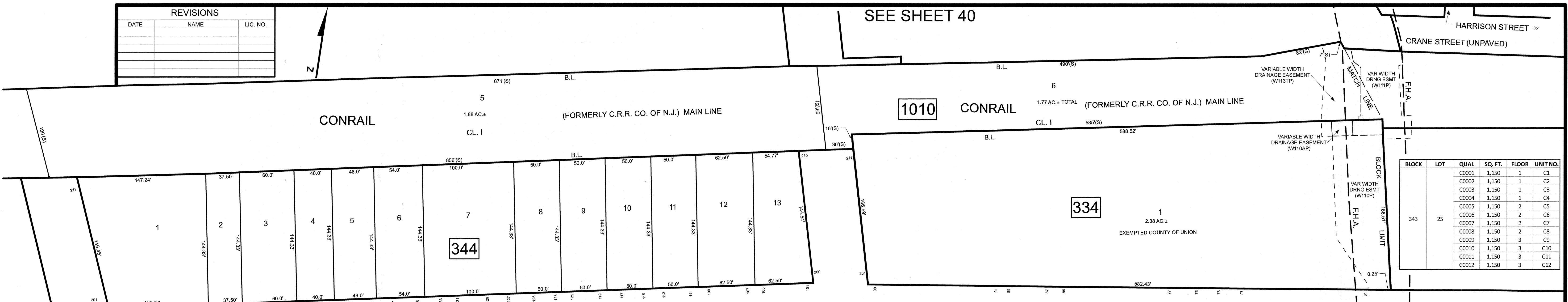


REVISIONS		
DATE	NAME	LIC. NO.



SEE SHEET 40



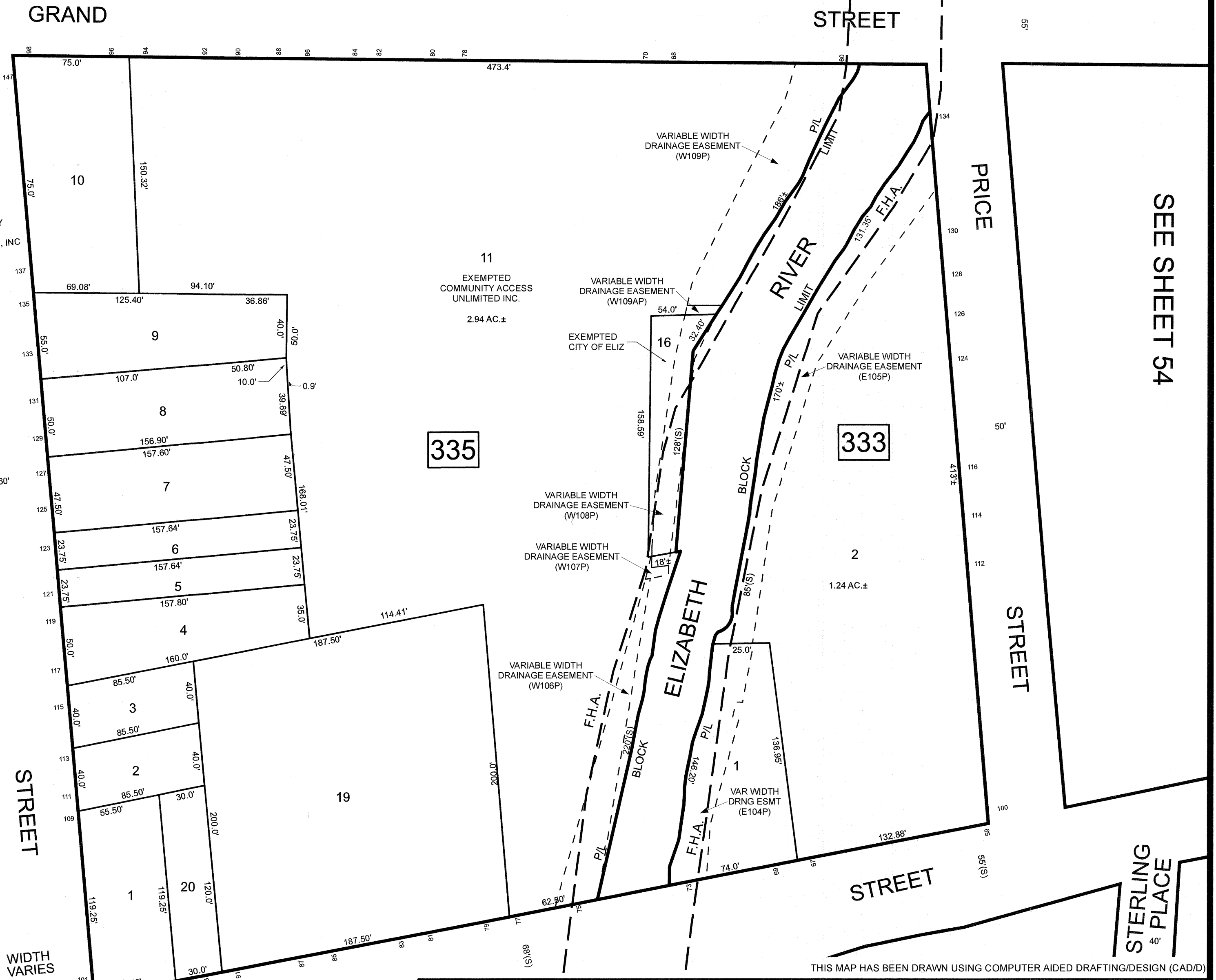
BLOCK	LOT	QUAL	SQ. FT.	FLOOR	UNIT NO.
343	25	C0001	1,150	1	C1
		C0002	1,150	1	C2
		C0003	1,150	1	C3
		C0004	1,150	1	C4
		C0005	1,150	2	C5
		C0006	1,150	2	C6
		C0007	1,150	2	C7
		C0008	1,150	2	C8
		C0009	1,150	3	C9
		C0010	1,150	3	C10
		C0011	1,150	3	C11
		C0012	1,150	3	C12



SEE SHEET 28

SEE SHEET 42

SEE SHEET 52



SEE SHEET 54

BLOCK	LOT	QUAL	SQ. FT.	FLOOR	UNIT NO.
343	35	C0001	838	1	A01
		C0002	839	1	A02
		C0003	831	2	B01
		C0004	831	2	B02
		C0005	831	3	C01
		C0006	831	3	C02

NEW JERSEY DEPARTMENT OF THE TREASURY
 DIVISION OF TAXATION
 APPROVED AS A TAX MAP PURSUANT TO THE AUTHORITY OF
 N.J.S.A. 84:1-16 AND N.J.S.A. 84:25-1
 FOR THE DIRECTOR, DIVISION OF TAXATION

DATE **MAR 3 1 2022** SERIAL NO. **1129**

TAX MAP
CITY OF ELIZABETH
 UNION COUNTY NEW JERSEY
 SCALE: 1" = 50' FEB. 15, 2019
GLEN J. LLOYD
 N.J. PROFESSIONAL LAND SURVEYOR LIC. #GS037598
 MASER CONSULTING PA
 331 NEWMAN SPRINGS ROAD, SUITE 203
 RED BANK, NJ 07701