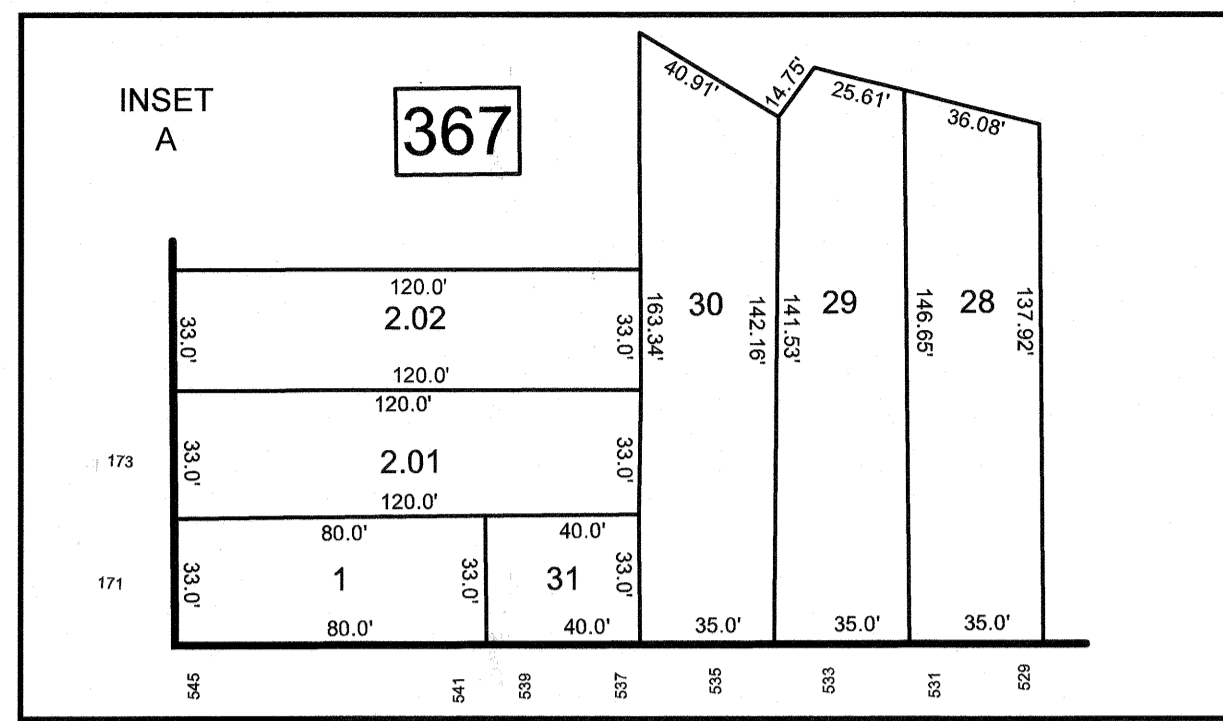
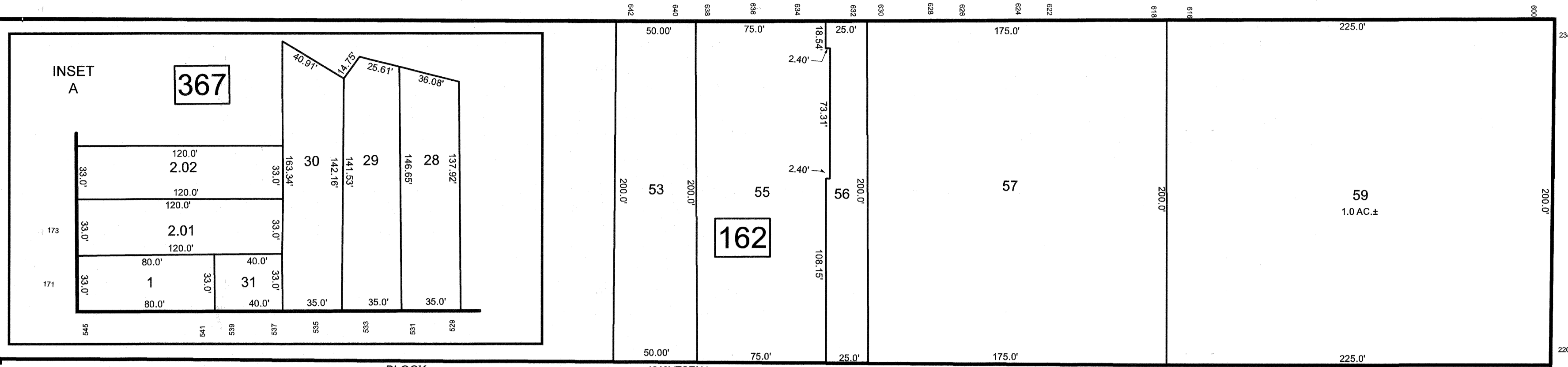


REVISIONS		
DATE	NAME	LIC. NO.



WESTFIELD



SEE SHEET 15

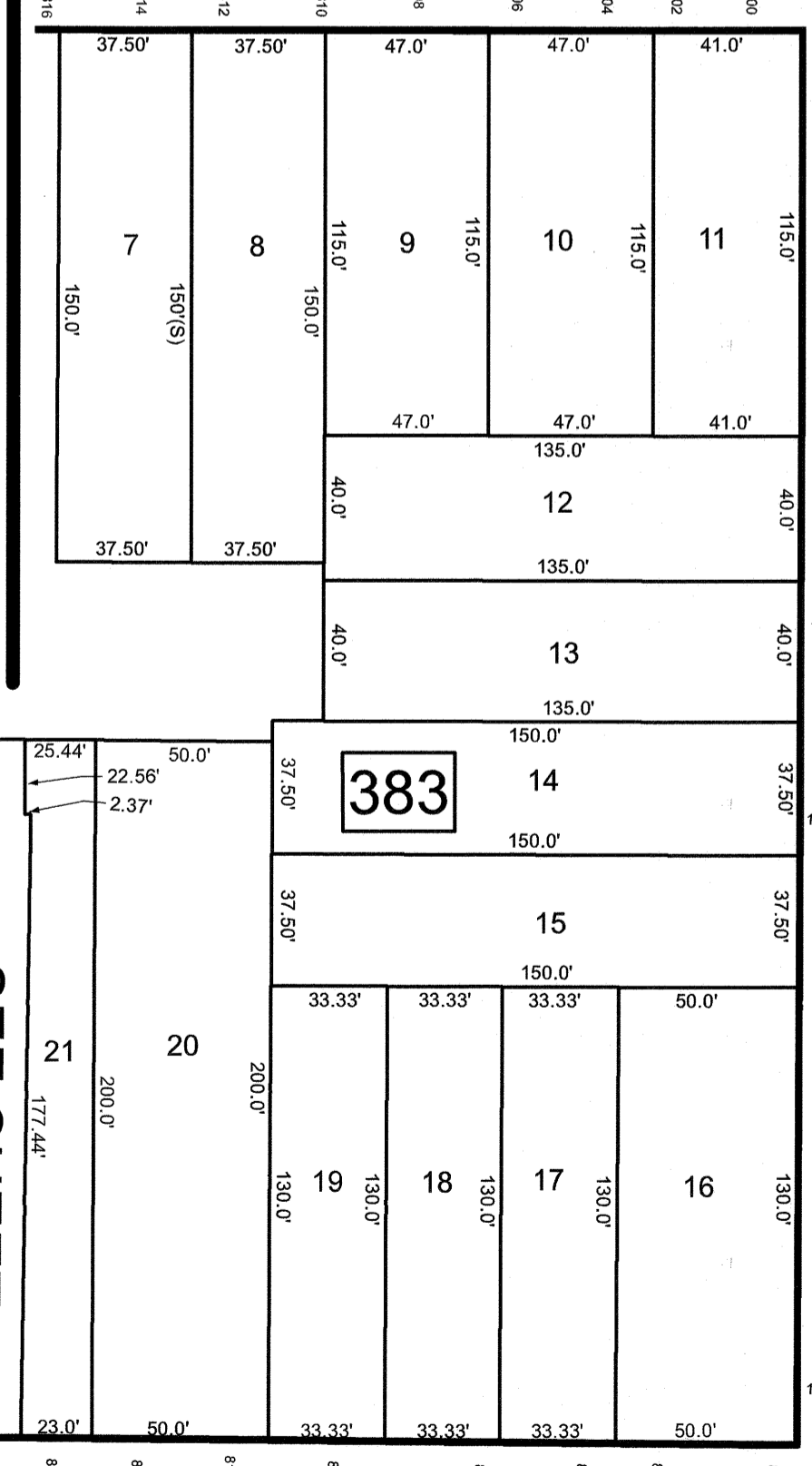
MATCH LINE

381

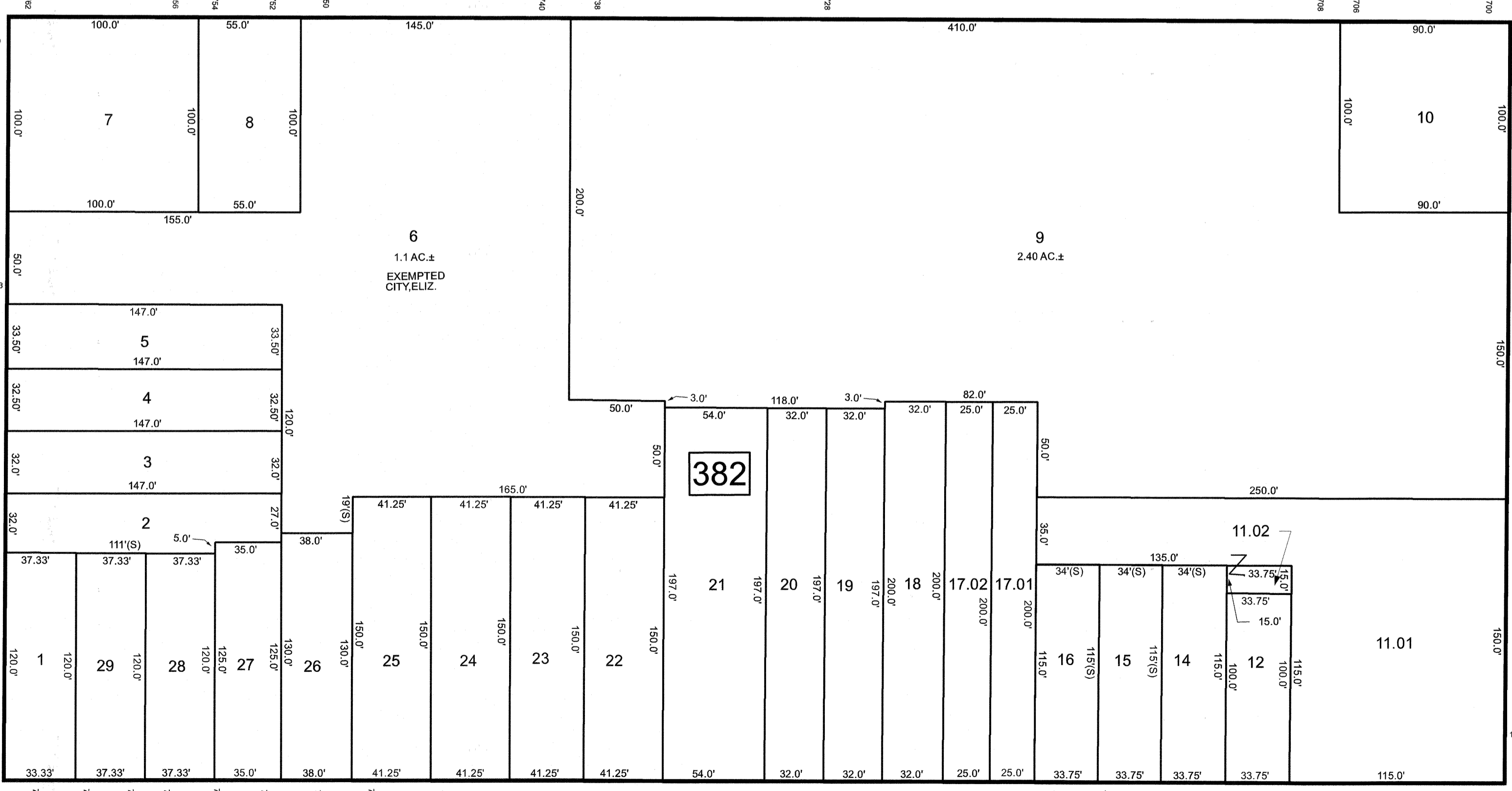
4

6.03 AC.± TOTAL

WEST GRAND STREET



BELLEVUE STREET



PENNINGTON STREET

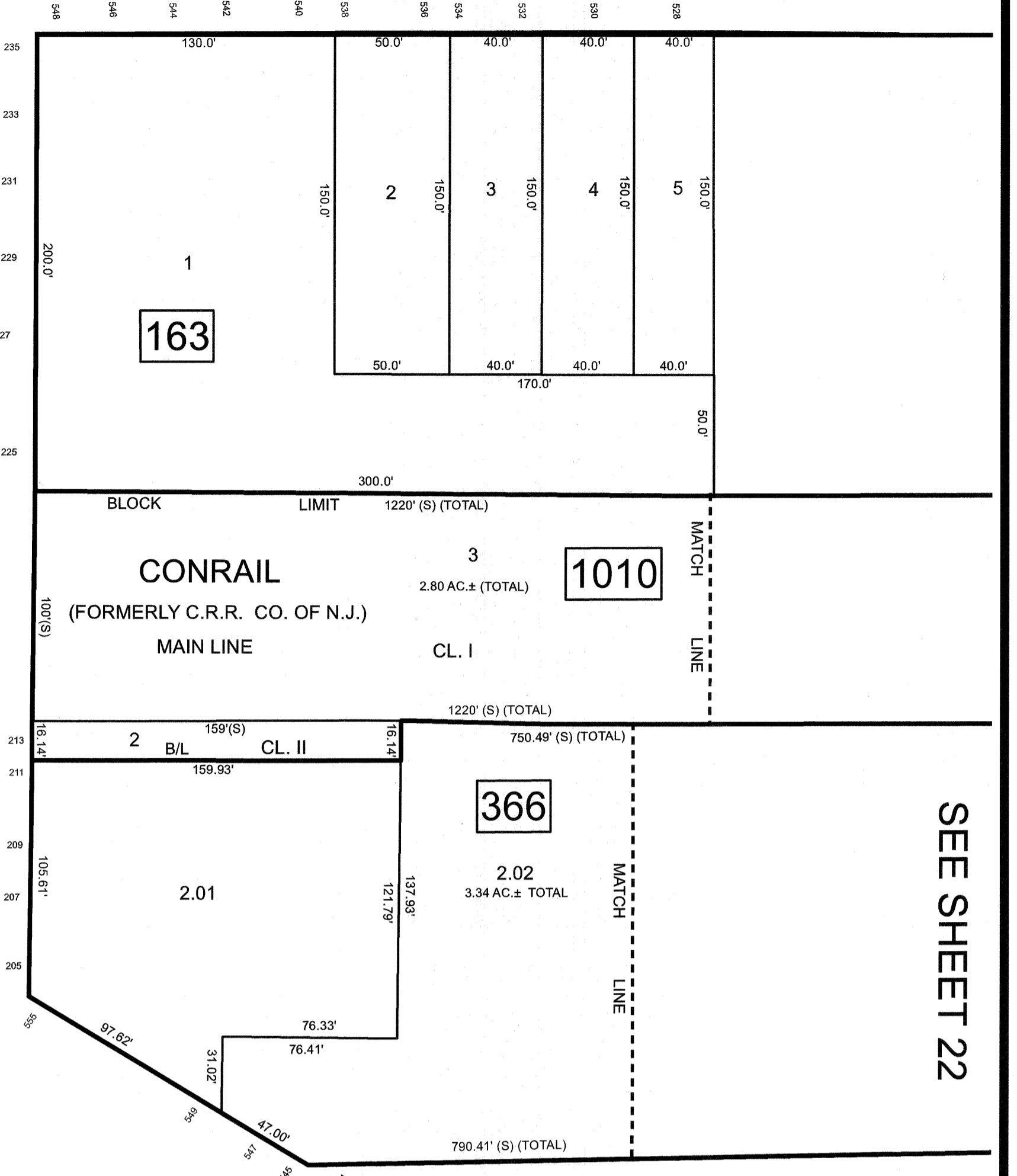
STREET

SEE SHEET 25

SEE SHEET 26

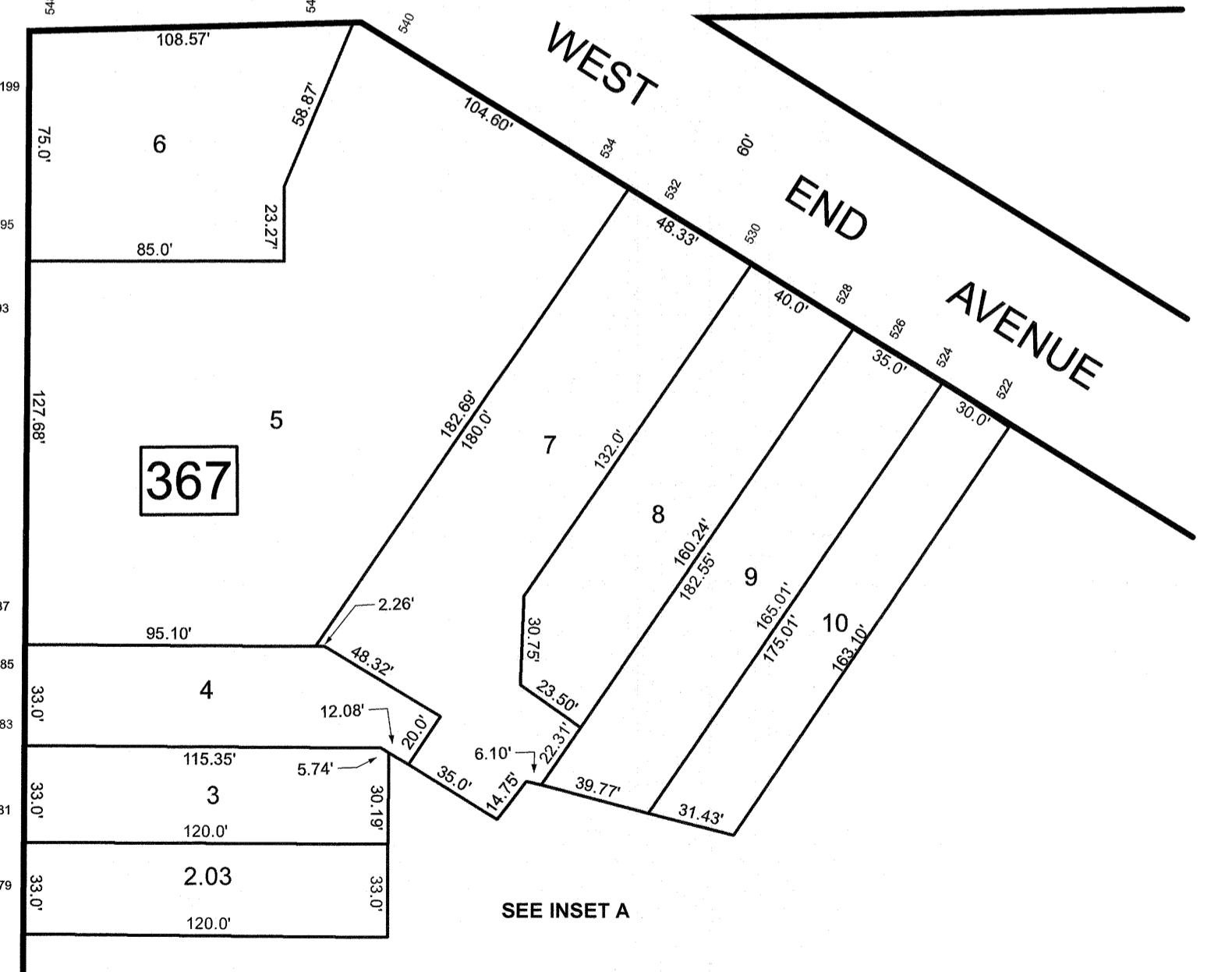
ELMORA

AVENUE



SEE SHEET 22

AVENUE



THIS MAP HAS BEEN DRAWN USING COMPUTER AIDED DRAFTING/DESIGN (CAD/D)

NEW JERSEY DEPARTMENT OF THE TREASURY
 DIVISION OF TAXATION
 APPROVED AS A TAX MAP PURSUANT TO THE AUTHORITY OF
 N.J.S.A. 54-18 AND N.J.S.A. 54-21
 FOR THE DIRECTOR, DIVISION OF TAXATION



DATE MAR 31 2022 SERIAL NO. 1129

TAX MAP
CITY OF ELIZABETH
 UNION COUNTY NEW JERSEY
 SCALE: 1" = 50' FEB. 15, 2019
GLEN J. LLOYD
 N.J. PROFESSIONAL LAND SURVEYOR LIC. #G037598
 MASER CONSULTING PA
 331 NEWMAN SPRINGS ROAD, SUITE 203
 RED BANK, NJ 07701