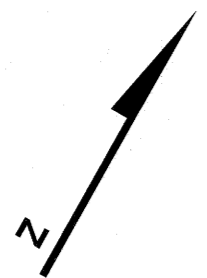


REVISIONS		
DATE	NAME	LIC. NO.



HILLSIDE TOWNSHIP  
UNION COUNTY

NORTH AVENUE

ASSESSED BY  
HILLSIDE  
TOWNSHIP

108

MALDEN TERRACE

WESTMINSTER

SEE SHEET 35

SCOTLAND ROAD

UNION

AVENUE

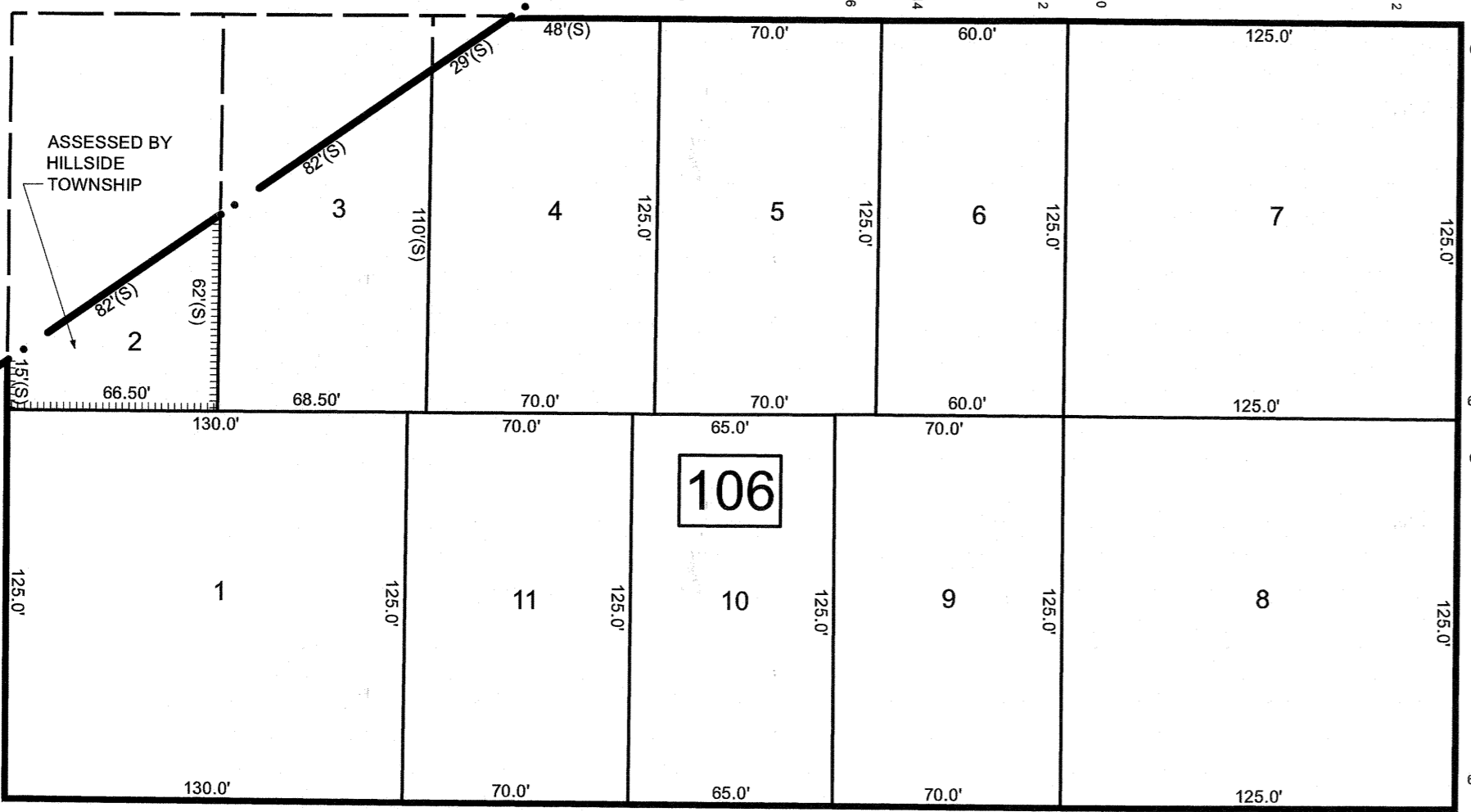
AVENUE

DENMAN PLACE

107

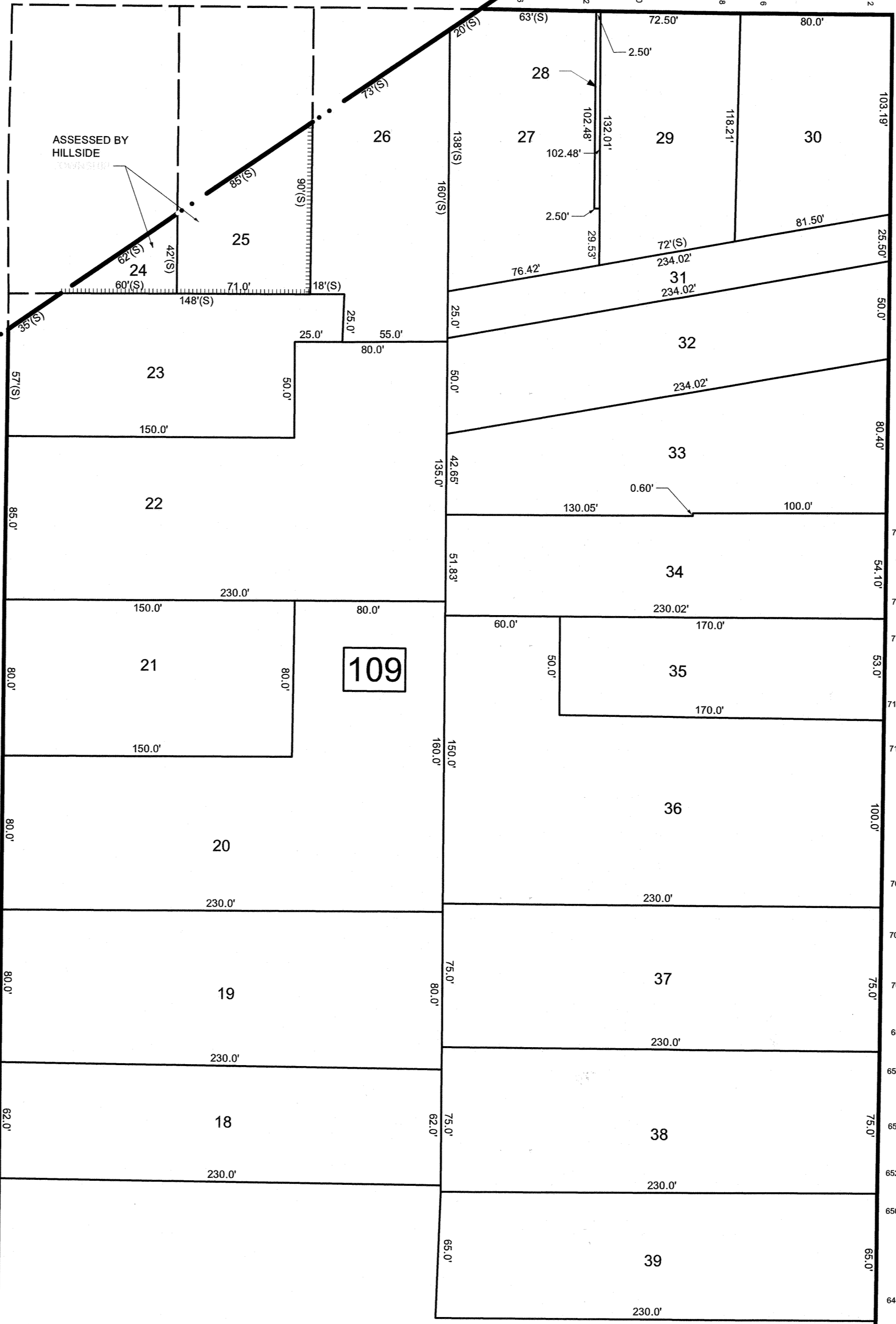
109

ASSESSED BY  
HILLSIDE  
TOWNSHIP



KEMPSHALL PLACE

PLACE



SEE SHEET 37

THIS MAP HAS BEEN DRAWN USING COMPUTER AIDED DRAFTING/DESIGN (CADD)

NEW JERSEY DEPARTMENT OF THE TREASURY  
DIVISION OF TAXATION  
APPROVED AS A TAX MAP PURSUANT TO THE AUTHORITY OF  
N.J.S.A. 54:1-18 AND N.J.S.A. 54:2-1  
FOR THE COMPTROLLER, DIVISION OF TAXATION



DATE MAR 31 2022 SERIAL NO. 1129

**TAX MAP**  
**CITY OF ELIZABETH**  
UNION COUNTY NEW JERSEY  
SCALE: 1" = 50' FEB. 15, 2019  
**GLEN J. LLOYD**

N.J. PROFESSIONAL LAND SURVEYOR LIC. #GS037598  
MASER CONSULTING PA  
331 NEWMAN SPRINGS ROAD, SUITE 203  
RED BANK, NJ 07701

SEE SHEET 33