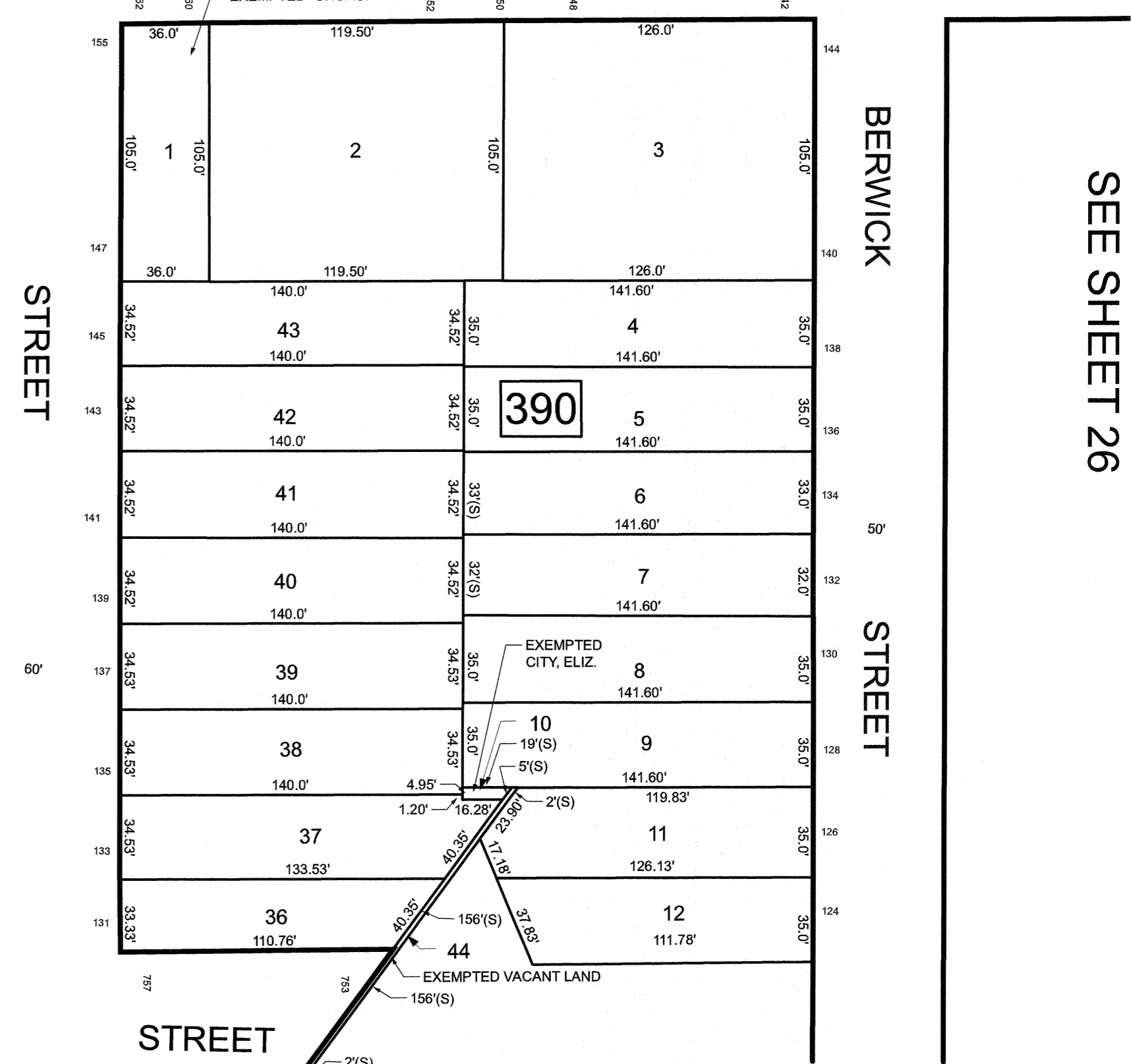
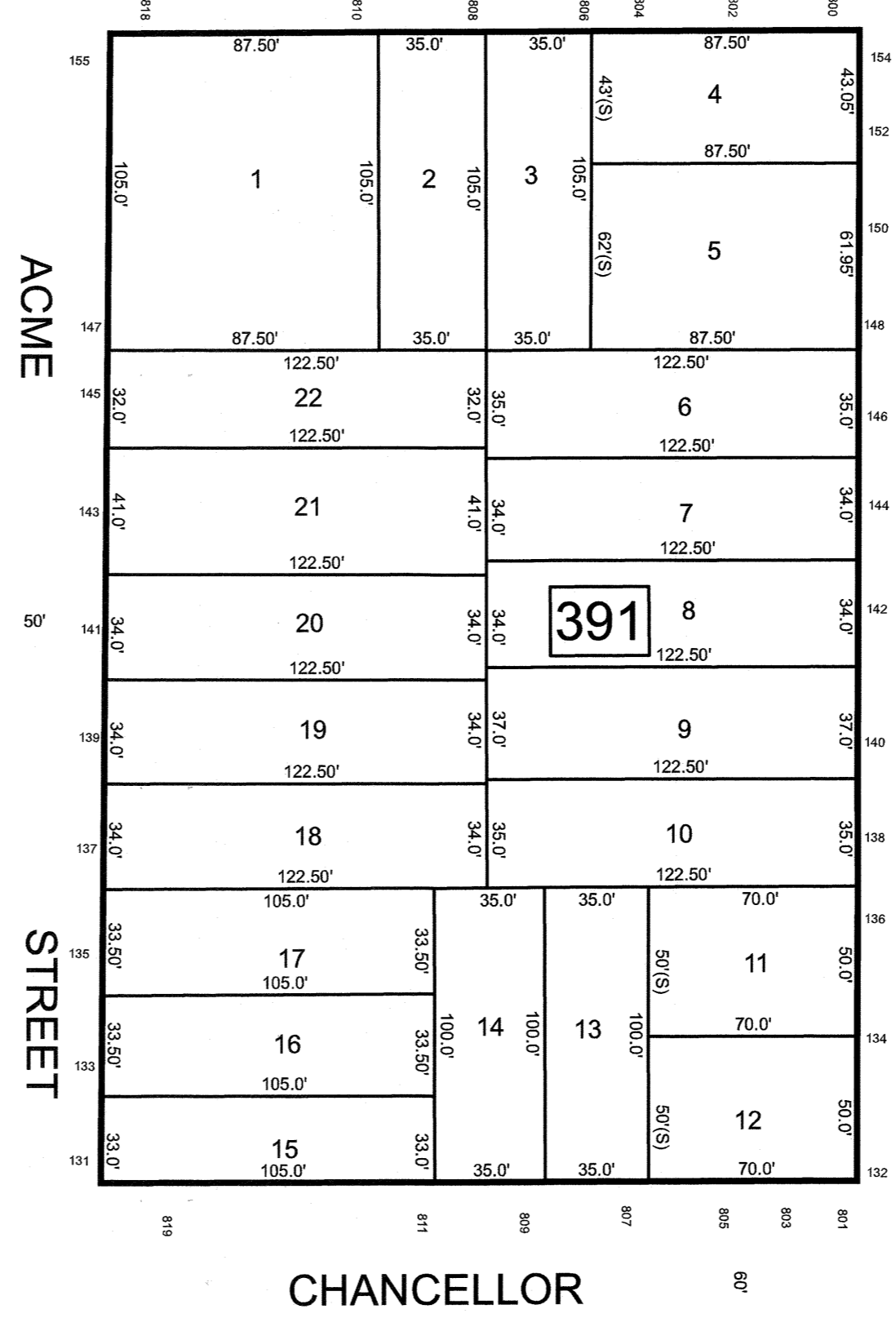
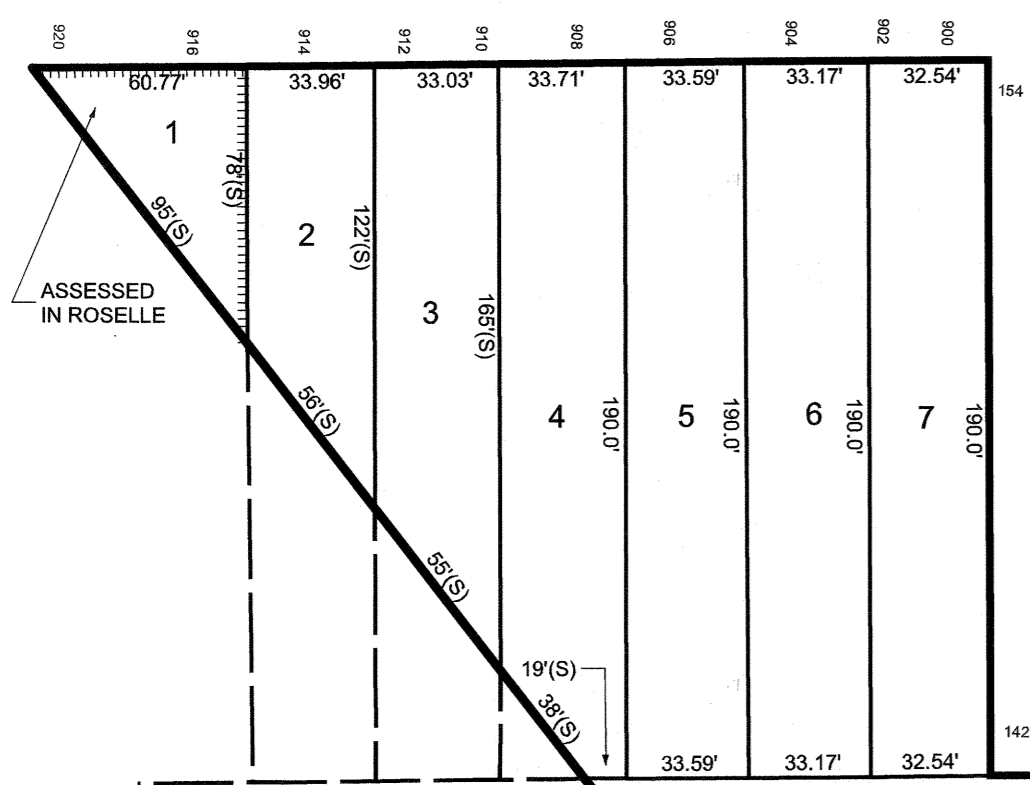
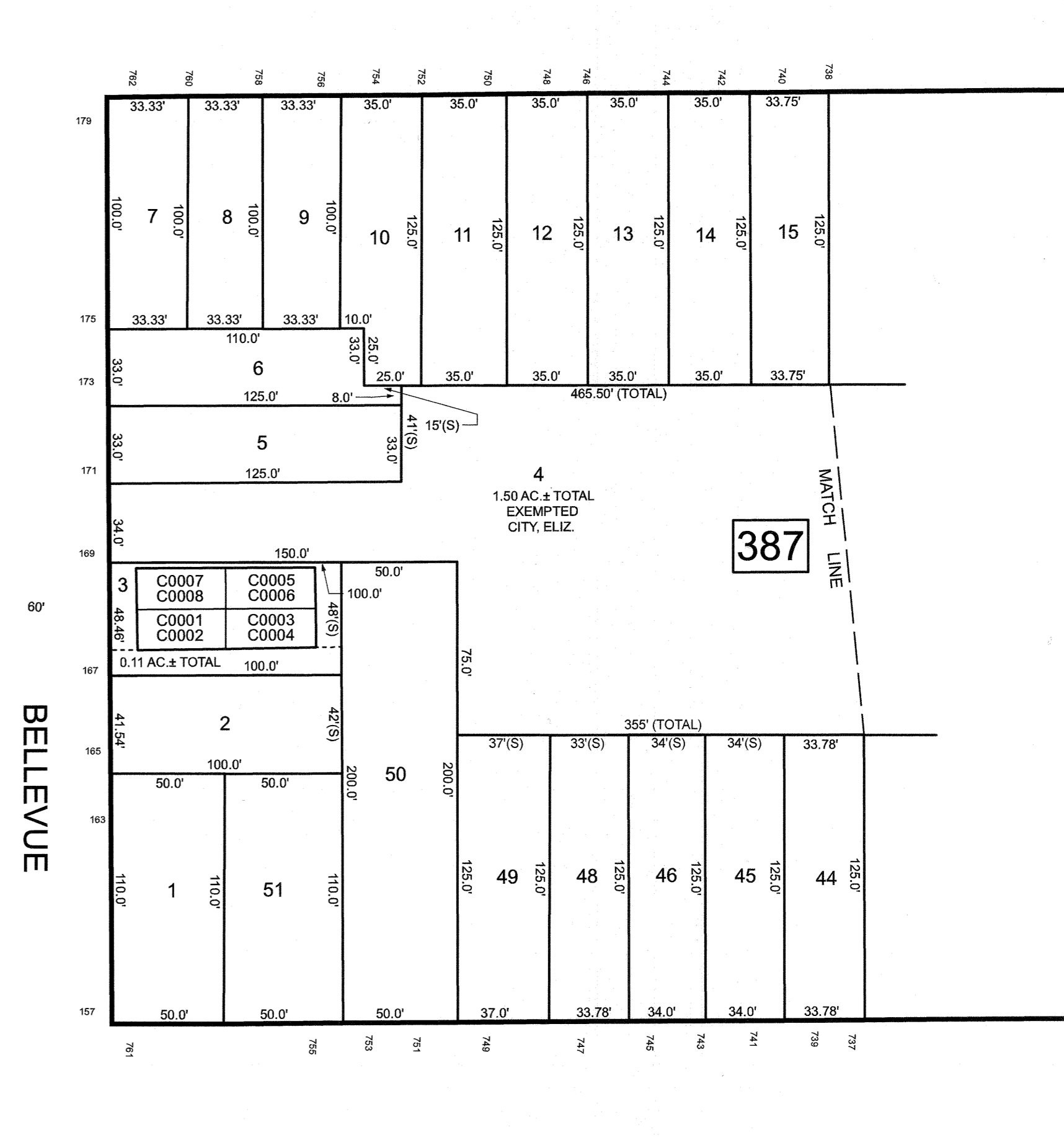
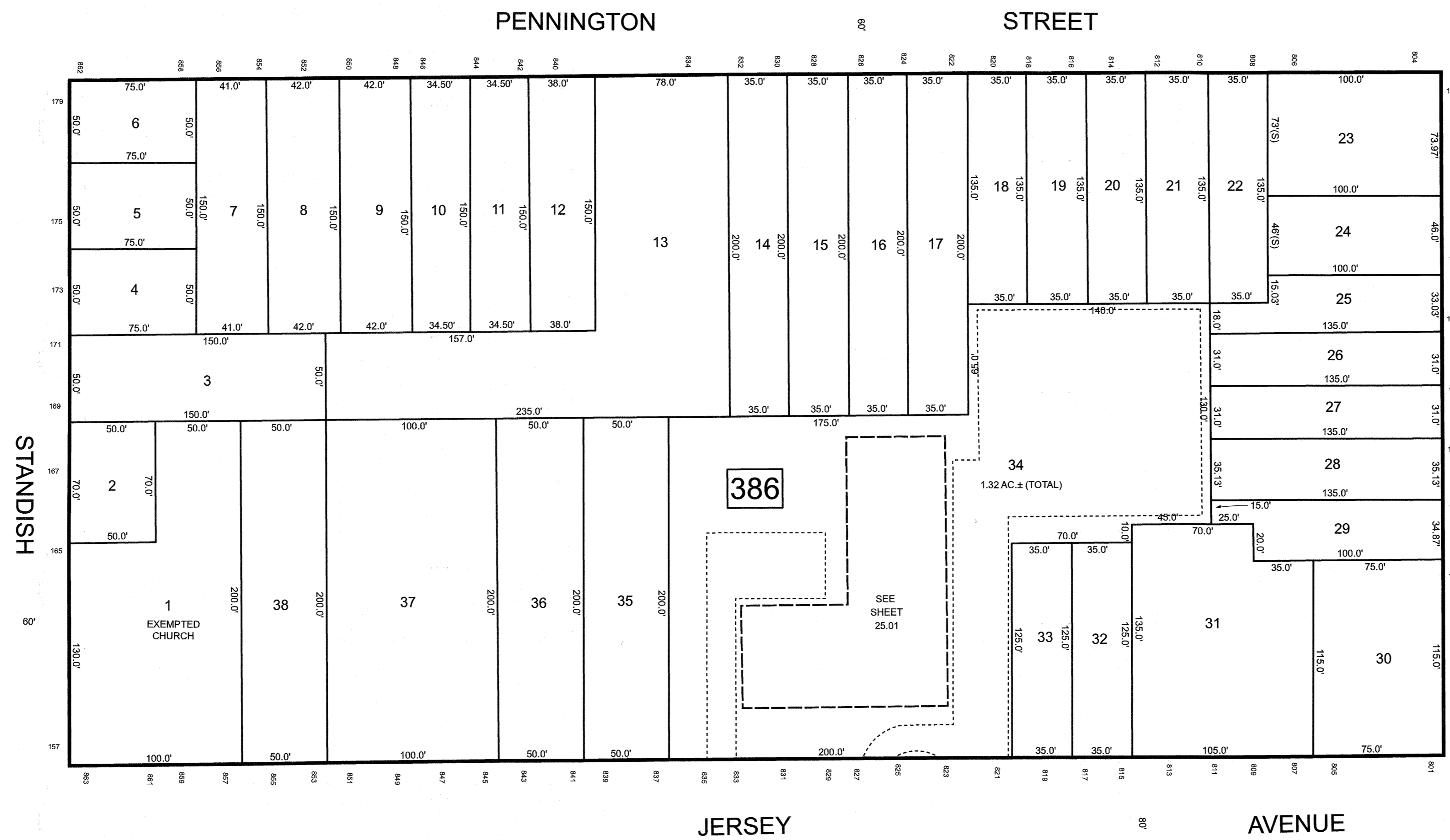


REVISIONS		
DATE	NAME	LIC. NO.

BLOCK	LOT	QUAL	SQ. FT.	FLOOR	UNIT NO.
387	3	C0001	678	1	1A
		C0002	678	2	2A
		C0003	678	1	1B
		C0004	678	2	2B
		C0005	678	1	1C
		C0006	678	2	2C
		C0007	678	1	1D
		C0008	678	2	2D



BOROUGH OF ROSELLE UNION COUNTY

WARINANCO PARK

THIS MAP HAS BEEN DRAWN USING COMPUTER AIDED DRAFTING/DESIGN (CADD)

NEW JERSEY DEPARTMENT OF THE TREASURY
DIVISION OF TAXATION
APPROVED AS A TAX MAP PURSUANT TO THE AUTHORITY OF N.J.S.A. §§2-16 AND N.J.S.A. §§2-1 FOR THE COMPTROLLER, DIVISION OF TAXATION



DATE MAR 31 2022 SERIAL NO. 1129

TAX MAP
CITY OF ELIZABETH
UNION COUNTY NEW JERSEY
SCALE: 1" = 50' FEB. 15, 2019
GLEN J. LLOYD
N.J. PROFESSIONAL LAND SURVEYOR LIC. #GS037598
MASER CONSULTING PA
331 NEWMAN SPRINGS ROAD, SUITE 203
RED BANK, NJ 07701

SEE SHEET 44

SEE SHEET 26