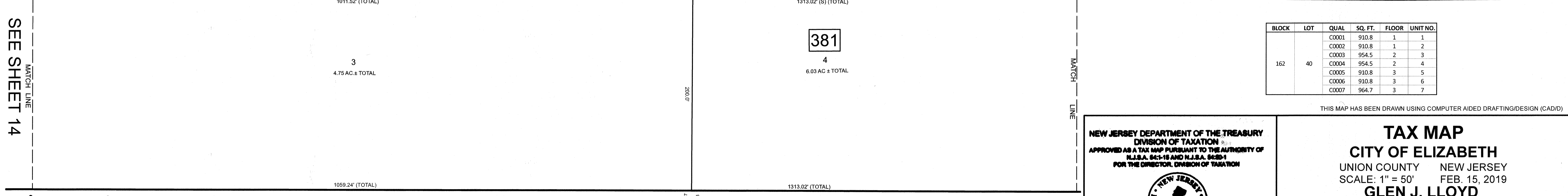
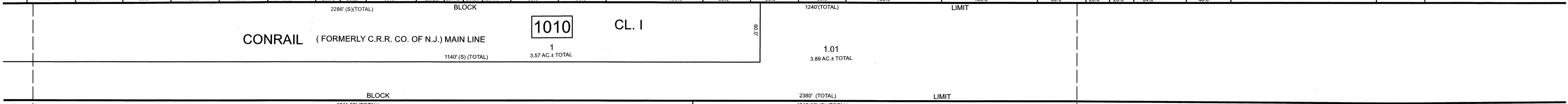
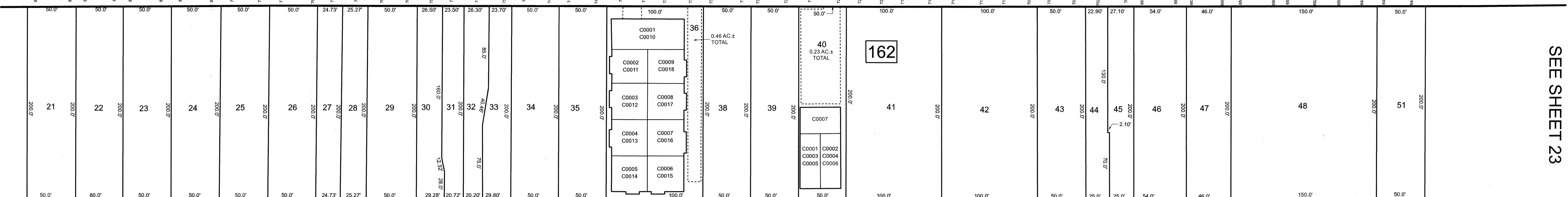
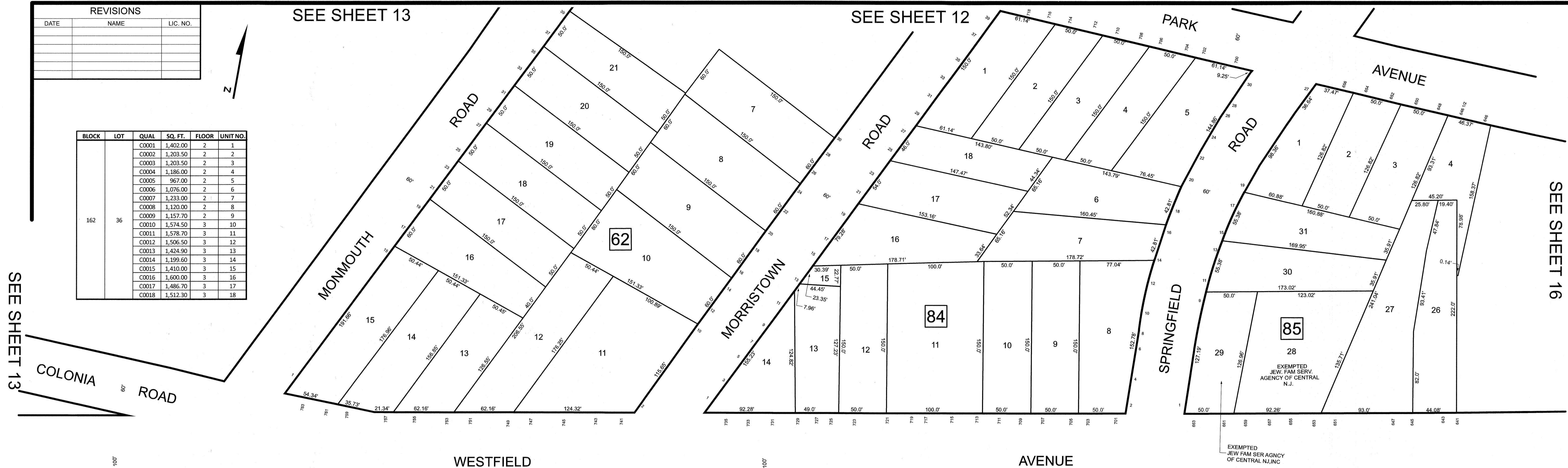


REVISIONS		
DATE	NAME	LIC. NO.

BLOCK	LOT	QUAL	SQ. FT.	FLOOR	UNIT NO.
162	36	C0001	1,402.00	2	1
		C0002	1,203.50	2	2
		C0003	1,203.50	2	3
		C0004	1,186.00	2	4
		C0005	967.00	2	5
		C0006	1,076.00	2	6
		C0007	1,233.00	2	7
		C0008	1,120.00	2	8
		C0009	1,157.70	2	9
		C0010	1,574.50	3	10
		C0011	1,578.70	3	11
		C0012	1,506.50	3	12
		C0013	1,424.90	3	13
		C0014	1,199.60	3	14
		C0015	1,410.00	3	15
		C0016	1,600.00	3	16
		C0017	1,486.70	3	17
		C0018	1,512.30	3	18



BLOCK	LOT	QUAL	SQ. FT.	FLOOR	UNIT NO.
162	40	C0001	910.8	1	1
		C0002	910.8	1	2
		C0003	954.5	2	3
		C0004	954.5	2	4
		C0005	910.8	3	5
		C0006	910.8	3	6
		C0007	964.7	3	7

THIS MAP HAS BEEN DRAWN USING COMPUTER AIDED DRAFTING/DESIGN (CAD/D)

NEW JERSEY DEPARTMENT OF THE TREASURY
 DIVISION OF TAXATION
 APPROVED AS A TAX MAP PURSUANT TO THE AUTHORITY OF
 N.J.S.A. 84:1-15 AND N.J.S.A. 84:2D-1
 FOR THE DIRECTOR, DIVISION OF TAXATION



DATE MAR 31 2022 SERIAL NO. 1129

TAX MAP
CITY OF ELIZABETH
 UNION COUNTY NEW JERSEY
 SCALE: 1" = 50' FEB. 15, 2019
GLEN J. LLOYD
 N.J. PROFESSIONAL LAND SURVEYOR LIC. #G037598
 MASER CONSULTING PA
 331 NEWMAN SPRINGS ROAD, SUITE 203
 RED BANK, NJ 07701

SEE SHEET 13

SEE SHEET 13

SEE SHEET 12

SEE SHEET 16

SEE SHEET 14

SEE SHEET 24

SEE SHEET 23