

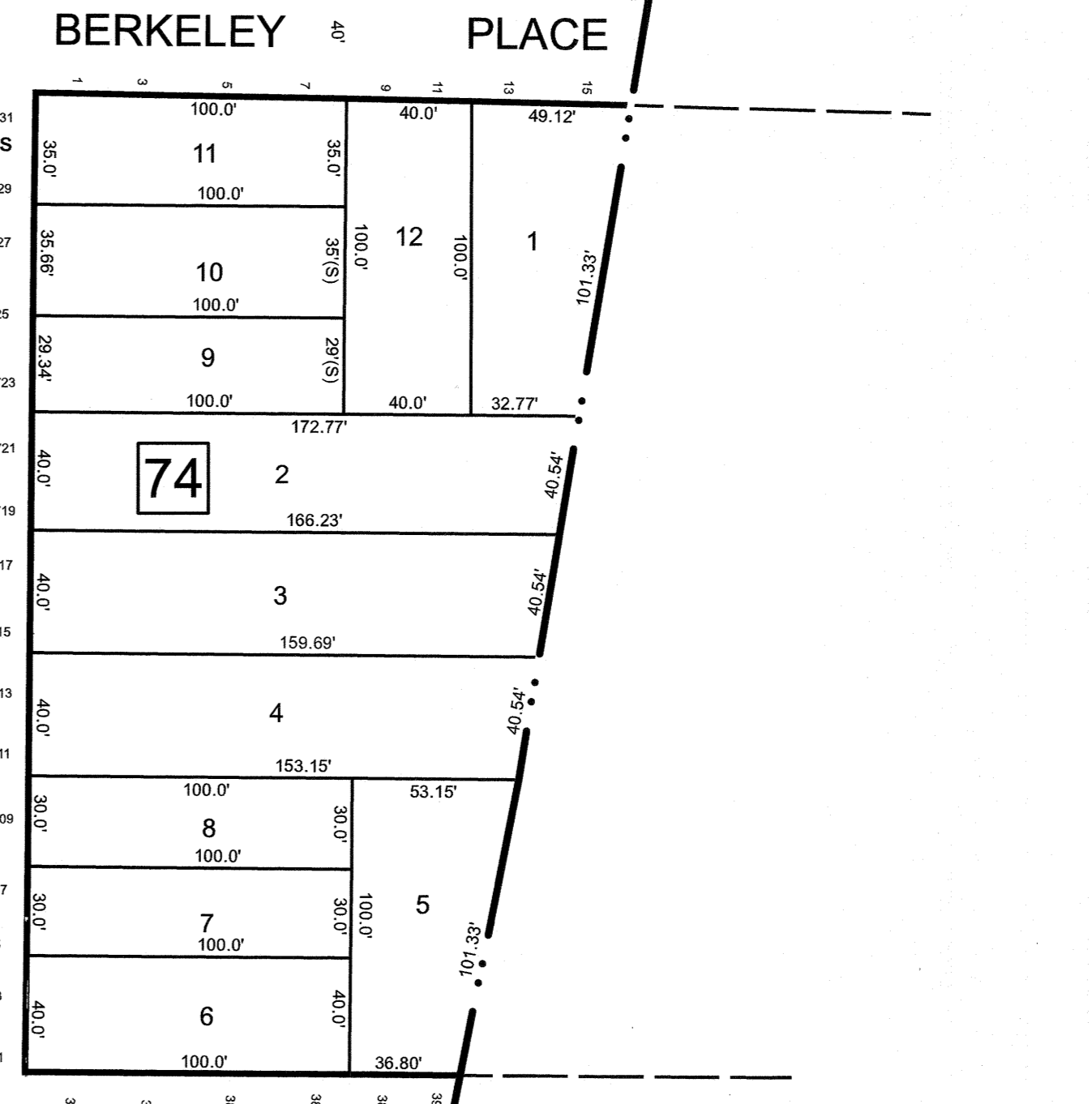
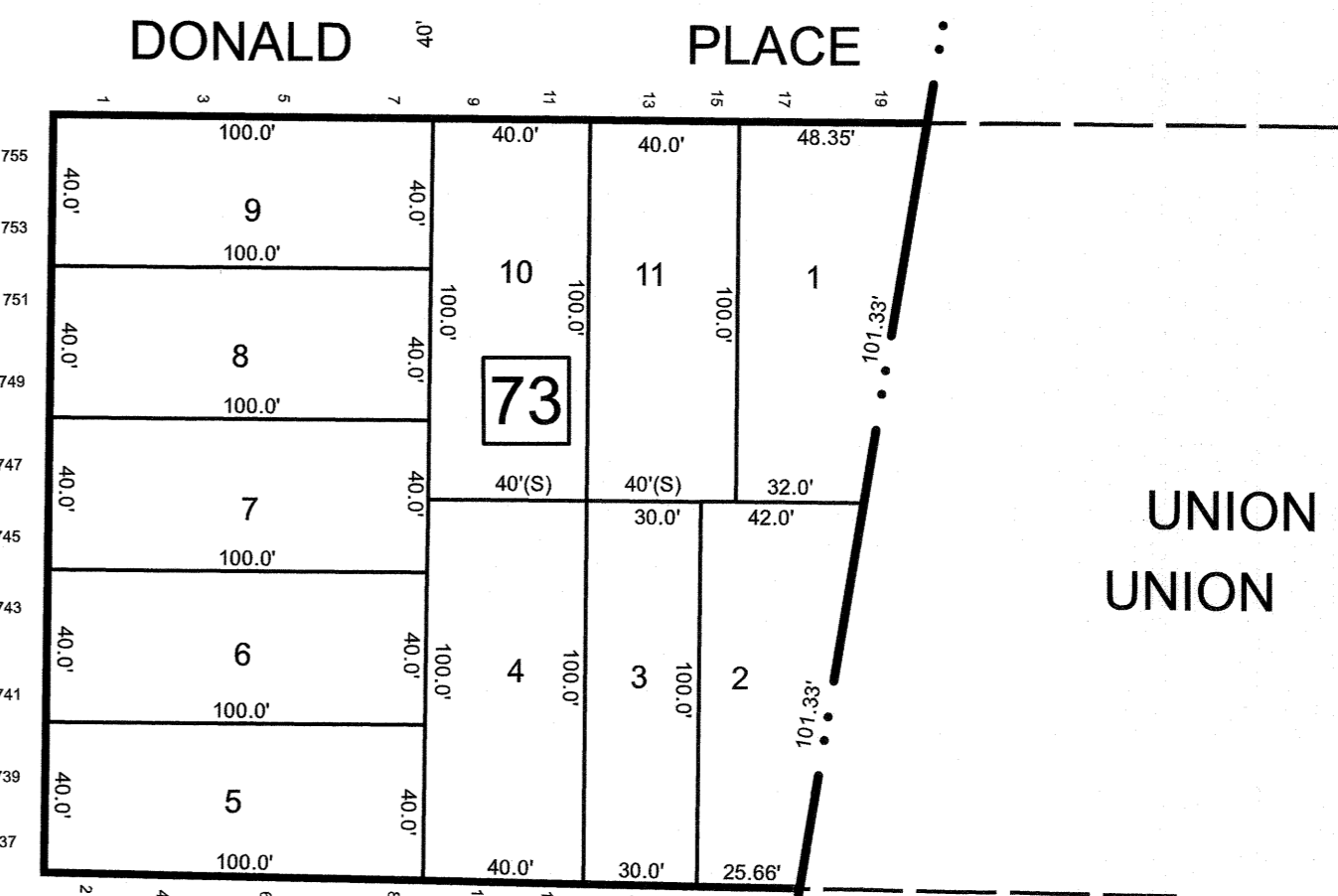
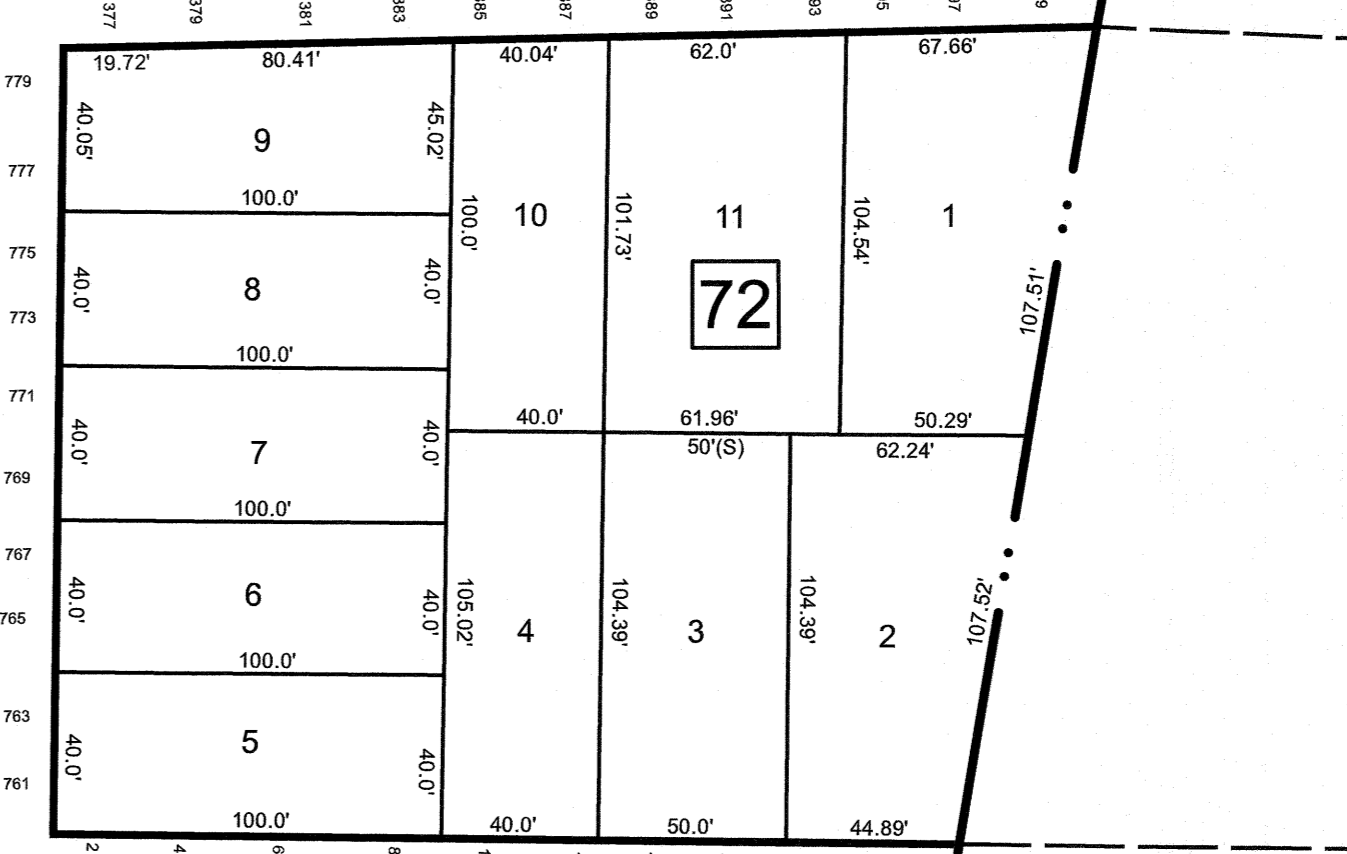
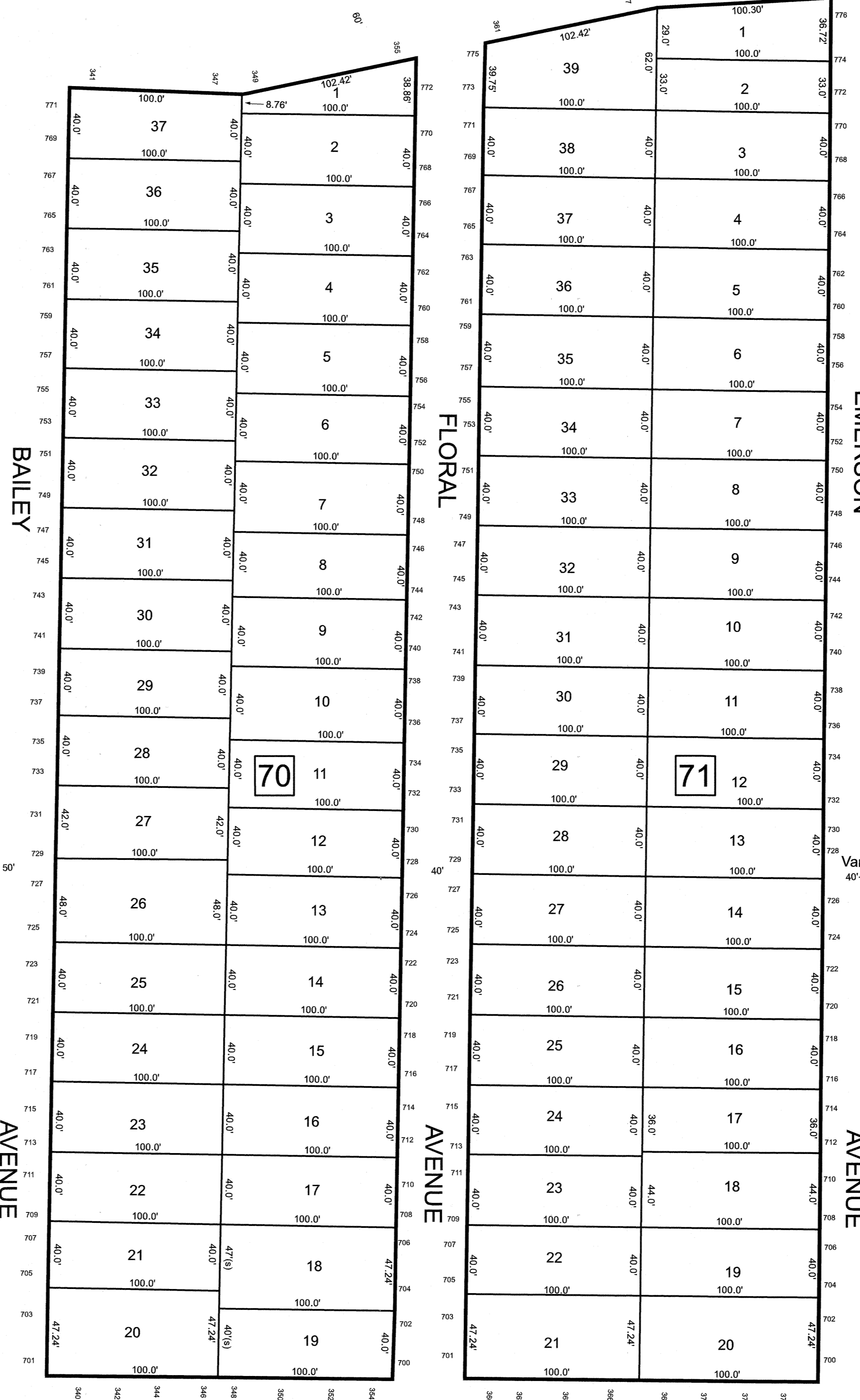
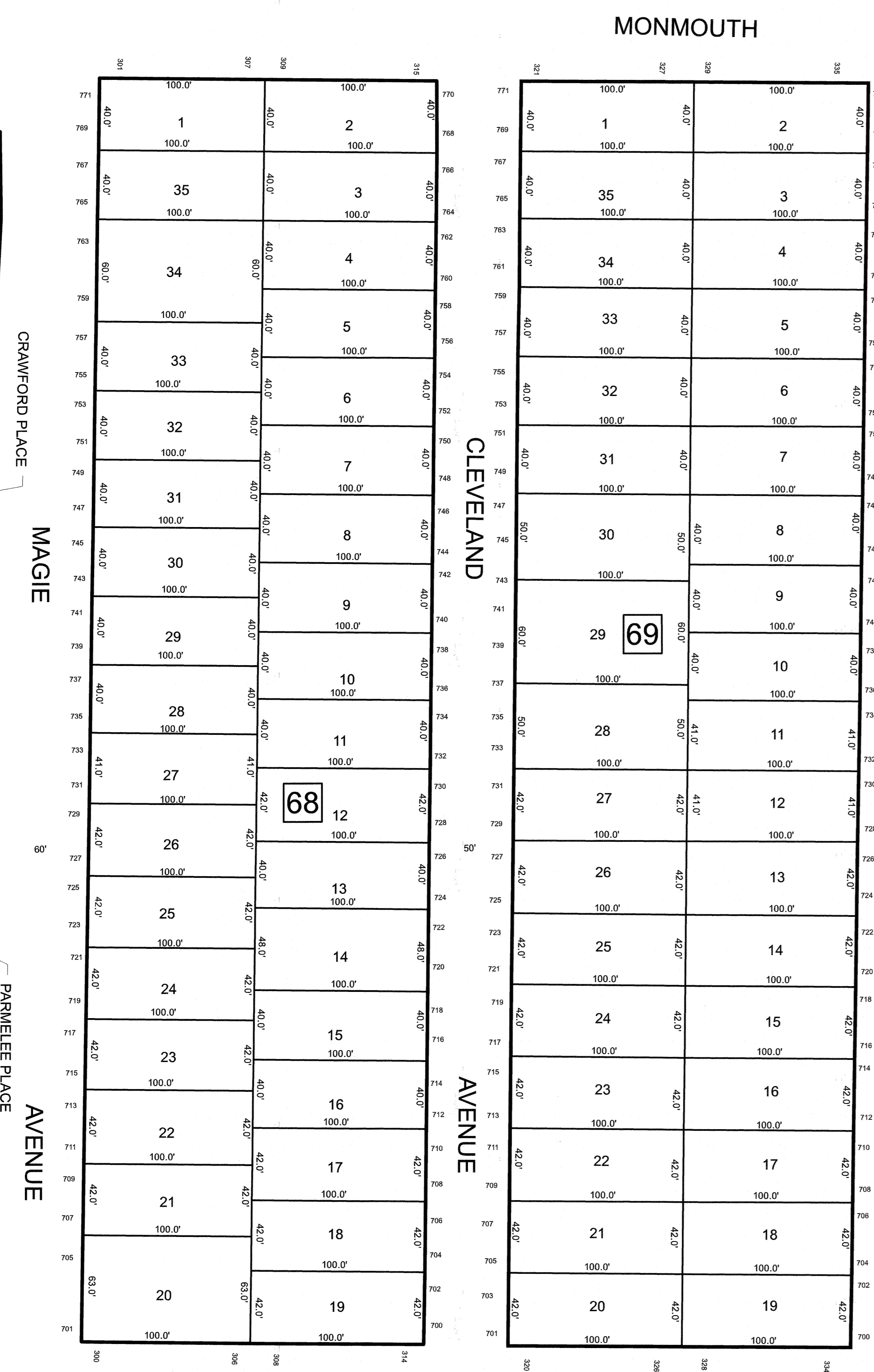
REVISIONS		
DATE	NAME	LIC. NO.

SEE SHEET 8

SEE SHEET 9

GEBHARDT AVENUE

ROAD



UNION TOWNSHIP
UNION COUNTY

CRAWFORD PLACE
MAGIE
SEE SHEET 11
PARMELEE PLACE
AVENUE

SPRINGFIELD

ROAD

SEE SHEET 17

THIS MAP HAS BEEN DRAWN USING COMPUTER AIDED DRAFTING/DESIGN (CAD/D)

NEW JERSEY DEPARTMENT OF THE TREASURY
DIVISION OF TAXATION
APPROVED AS A TAX MAP PURSUANT TO THE AUTHORITY OF
N.J.S.A. 54:1-18 AND N.J.S.A. 54:28-1
FOR THE DIRECTOR, DIVISION OF TAXATION



DATE MAR 31 2022 SERIAL NO. 1129

TAX MAP
CITY OF ELIZABETH
UNION COUNTY NEW JERSEY
SCALE: 1" = 50' FEB. 15, 2019
GLEN J. LLOYD
N.J. PROFESSIONAL LAND SURVEYOR LIC. #GS037598
MASER CONSULTING PA
331 NEWMAN SPRINGS ROAD, SUITE 203
RED BANK, NJ 07701