

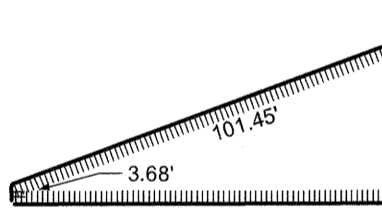
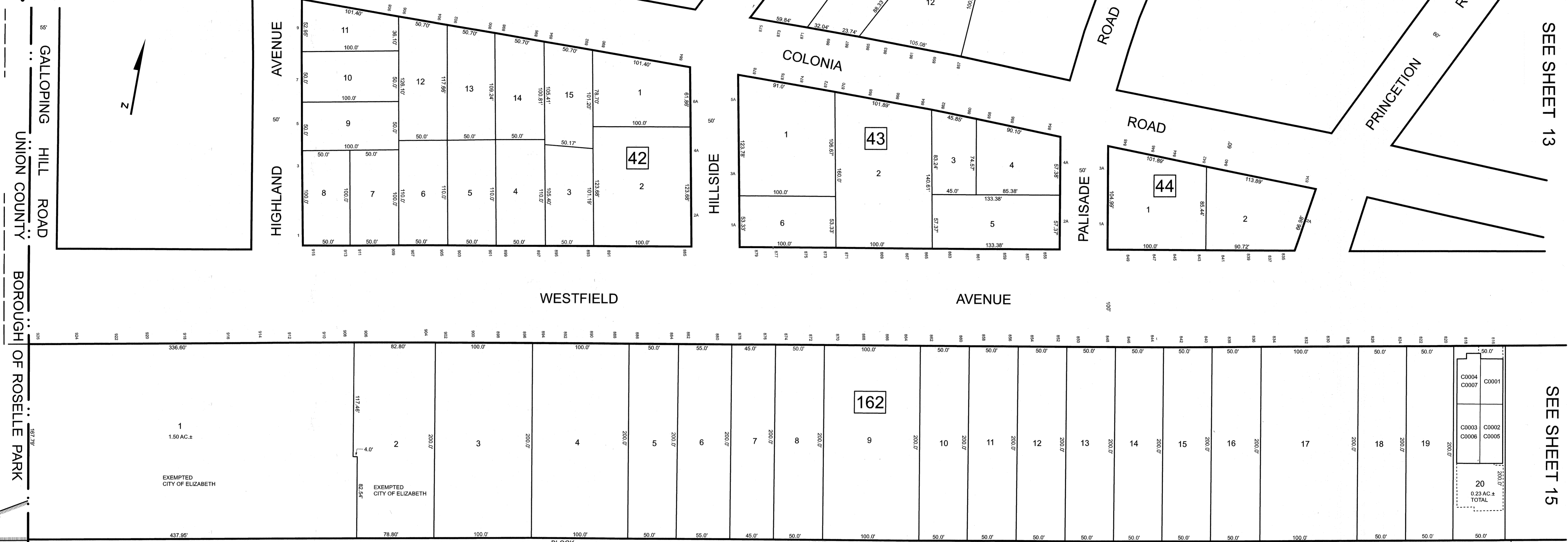
REVISIONS		
DATE	NAME	LIC. NO.

SEE SHEET 4

SEE SHEET 13

SEE SHEET 13

SEE SHEET 15



BLOCK	LOT	QUAL	SQ. FT.	FLOOR	UNIT NO.
162	20	C0001	553	1	1
		C0002	1,293.25	1	2
		C0003	1,181.87	1	3
		C0004	1,040	1	4
		C0005	1,293.25	2	5
		C0006	1,181.87	2	6
		C0007	1,040	2	7

NEW JERSEY DEPARTMENT OF THE TREASURY
 DIVISION OF TAXATION
 APPROVED AS A TAX MAP PURSUANT TO THE AUTHORITY OF
 N.J.S.A. 82:18 AND N.J.S.A. 84:2D-1
 FOR THE DIRECTOR, DIVISION OF TAXATION

DATE MAR 31 2022 SERIAL NO. 1129

TAX MAP
CITY OF ELIZABETH
 UNION COUNTY NEW JERSEY
 SCALE: 1" = 50' FEB. 15, 2019
GLEN J. LLOYD
 N.J. PROFESSIONAL LAND SURVEYOR LIC. #GS037598
 MASER CONSULTING PA
 331 NEWMAN SPRINGS ROAD, SUITE 203
 RED BANK, NJ 07701