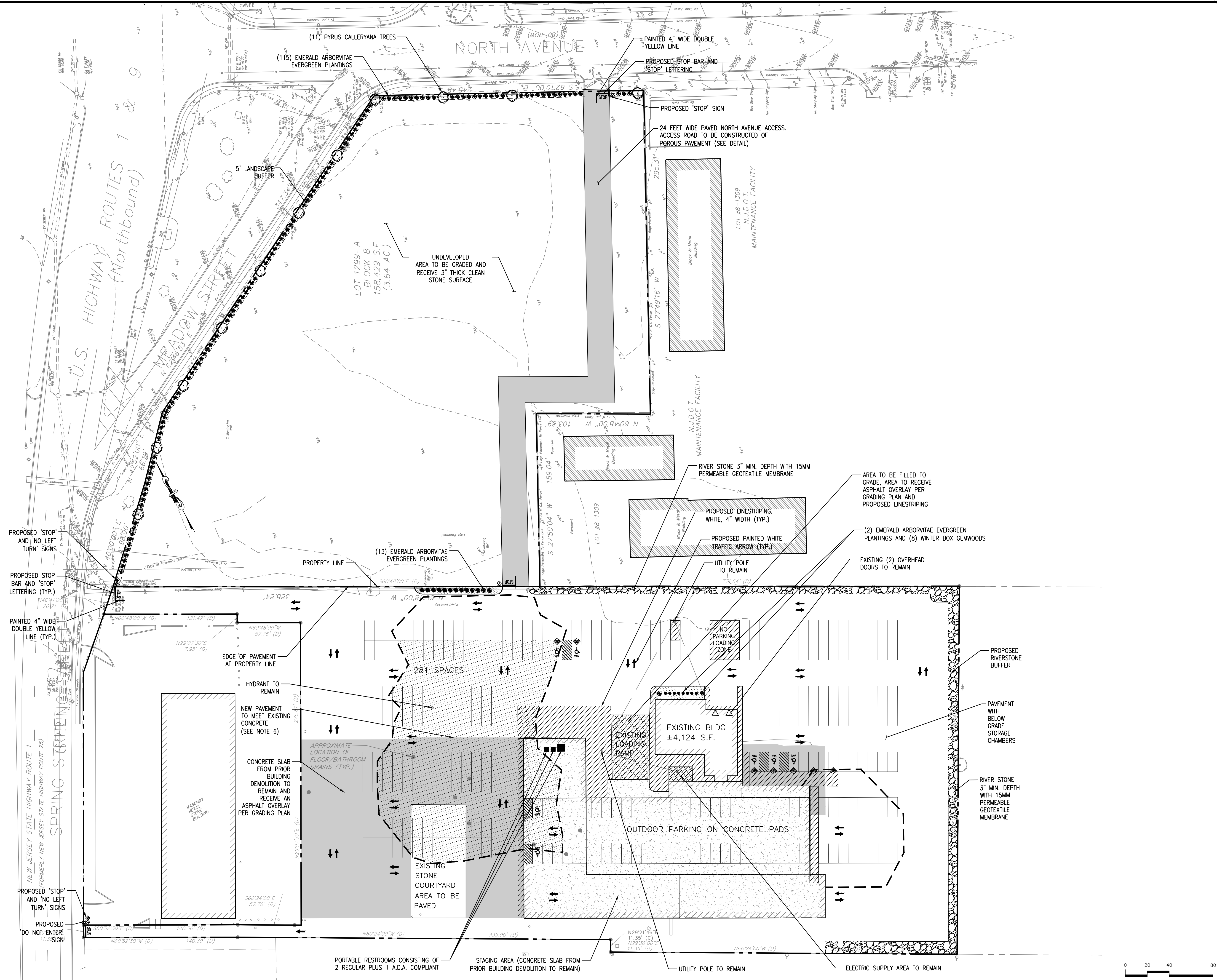


S:\PROJECTS\SSD-S-17-109 SPRING STREET DEVELOPMENT\CAD\SITE DESIGN\DRAWINGS\17-109 E-300 PREFERRED SITE PLAN EXHIBIT.DWG FBEMK PLOTTED: 09/26/2019



**Jarmel Kizel**  
ARCHITECTS AND ENGINEERS INC.  
42 OKNER PARKWAY  
LIVINGSTON, NEW JERSEY 07039  
TEL: 973-994-9669  
FAX: 973-994-4069  
www.jarmelkizel.com

Architecture  
Engineering  
Interior Design  
Implementation Services

ISSUE			
NO.	DATE	DESCRIPTION	INT.
1	9.26.19	ZONING BOARD SUBMISSION	LB

REVISION			
NO.	DATE	DESCRIPTION	INT.

PRINCIPALS	
<b>MATTHEW B. JARMEI, AIA, MBA</b>	NJ LIC: A01-12787 AZ LIC: A01-359 MN LIC: A01-4654 CO LIC: A01-483 CT LIC: A01-1415 DC LIC: A01-1849 DE LIC: S-000756 FL LIC: A01-9965 GA LIC: A01-1484 IA LIC: 00517 IL LIC: 001-00069 IN LIC: A01-0296 MD LIC: 120162189 MI LIC: 120162189
<b>IRWIN H. KIZEL, AIA, PE</b>	NJ LIC: A01-0822 NY LIC: A01-0822 PA LIC: A01-0822 VA LIC: A01-0822 WI LIC: A01-0822
<b>RICHARD A. JARMEI, PE</b>	NJ LIC: A01-0822 PA LIC: A01-0822 VA LIC: A01-0822 WI LIC: A01-0822
<b>RONALD A. BROKENSHE, PE</b>	NJ LIC: C64551 NY LIC: P08861 PA LIC: A01-13231 VA LIC: A01-13231 WI LIC: A01-13231
<b>DAVID L. LESENE, RA</b>	NJ LIC: A01-13231 PA LIC: A01-13231 VA LIC: A01-13231 WI LIC: A01-13231
<b>MICHAEL J. VOLAND, RA</b>	NJ LIC: C05993 PA LIC: A01-05993 VA LIC: A01-05993 WI LIC: A01-05993
<b>GERARD P. GESARIO, PE</b>	NJ LIC: C05993 PA LIC: A01-05993 VA LIC: A01-05993 WI LIC: A01-05993
<b>FREDERICK KINCAID, RA</b>	NJ LIC: A16502 PA LIC: A01-16502 VA LIC: A01-16502 WI LIC: A01-16502
<b>JEROME LESLIE BERN, PA, PP</b>	NJ LIC: A16502 PA LIC: A01-16502 VA LIC: A01-16502 WI LIC: A01-16502
<b>CHERYL SCHWEIKER, AIA</b>	NJ LIC: A01-07873 PA LIC: A01-07873 VA LIC: A01-07873 WI LIC: A01-07873

Project: 703-727 Spring Street and 729-763 Meadow Street Caping Plan  
TENANT: AMAZON LOGISTICS  
703-727 Spring Street, 729-763 Meadow Street,  
CITY OF ELIZABETH, UNION COUNTY, NJ  
BLOCK 8, LOTS 1299-A & 1699-D, TAX MAP: BK 4, PG 16 & 19

Project No: **SSD-S-17-109** Scale: **1" = 40'**

Drawn By: **LB** Approved By: **GPG**

Drawing Name: **PREFERRED SITE PLAN EXHIBIT**

Drawing Number: **E-300**

Sheet No: **1** of **1**

Initial Date: **SEPTEMBER 25, 2019**

**GERARD P. GESARIO**  
PROFESSIONAL ENGINEER  
N.J. LIC. #GE038255