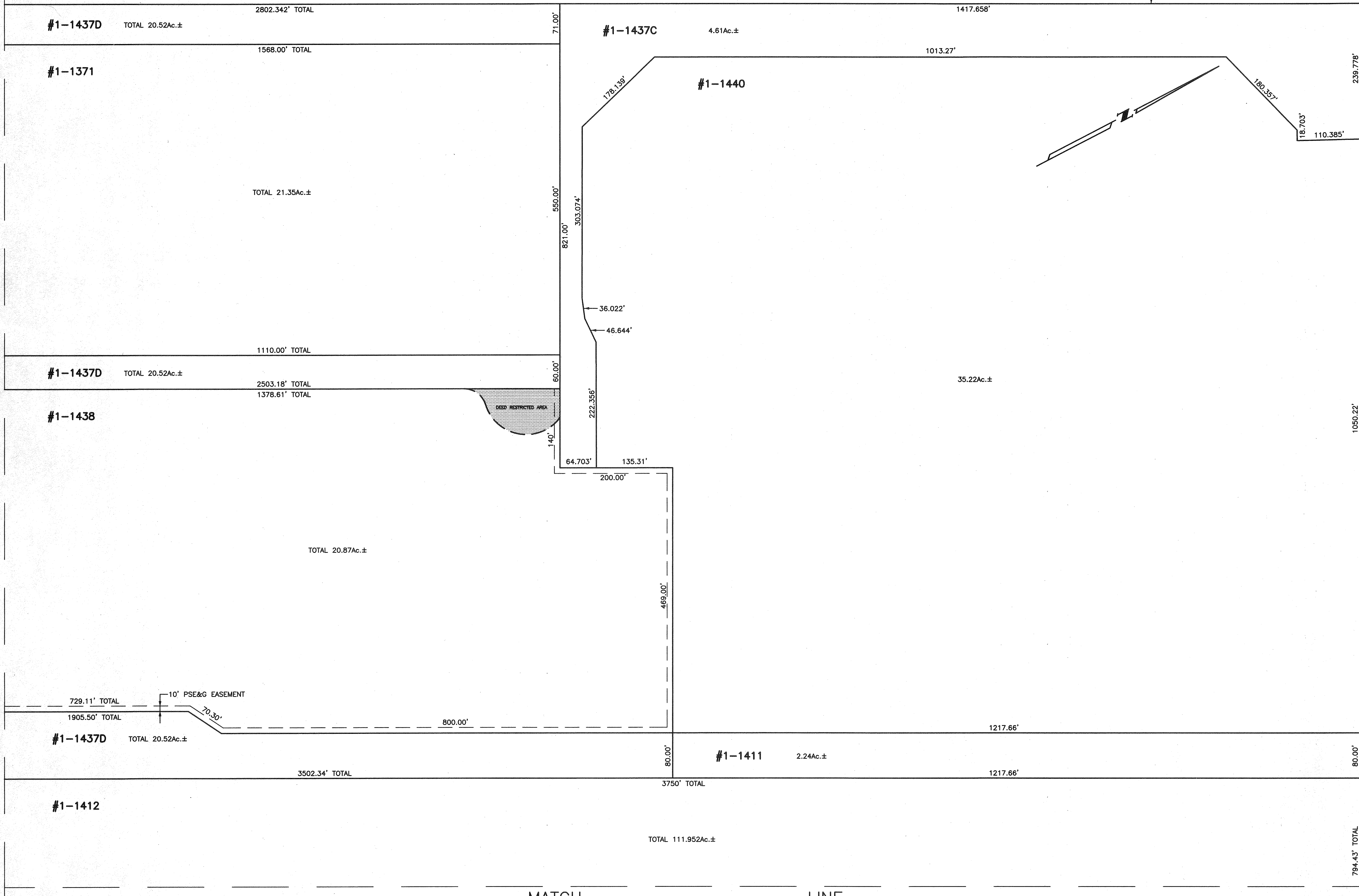


CENTRAL RAILROAD OF NEW JERSEY (CONRAIL)

BOOK 13 SHEET 2
MATCH
LINE



80.00'

BAY AVENUE (VACATED ORD. No. 2318)

308.0'

CHANGED TO CLASS II RAILROAD DESIGNATION JANUARY 2, 1976 ORIGINALLY TAX ACCOUNT #1-1560

438.00' TOTAL

CORBIN STREET (VACATED ORD. No. 2319)

478.00' TOTAL

#1-1351 1.65Ac.±

478.00' TOTAL

483.02' TOTAL

#1-1350 18.72Ac.±

BAY AVENUE (VACATED ORD. No. 2318)

1497.71' TOTAL

1050.22'

80.00'

794.43' TOTAL

REV. 03/15/1999, BY S. RINALDI GS38944
SUBDIVISION TAX ACCOUNT No. 1-1440, FILED MAP 903-A
AND VACATION OF CORBIN ST. AND BAY AVE., DATED 9/18/1990
REVISIONS: