

3.312016 TAX ACCOUNT #1-659 ADDED PER DEPARTMENT OF TREASURY NOTIFICATION 8/11/99. REV. BY S. RINALDI 6538944

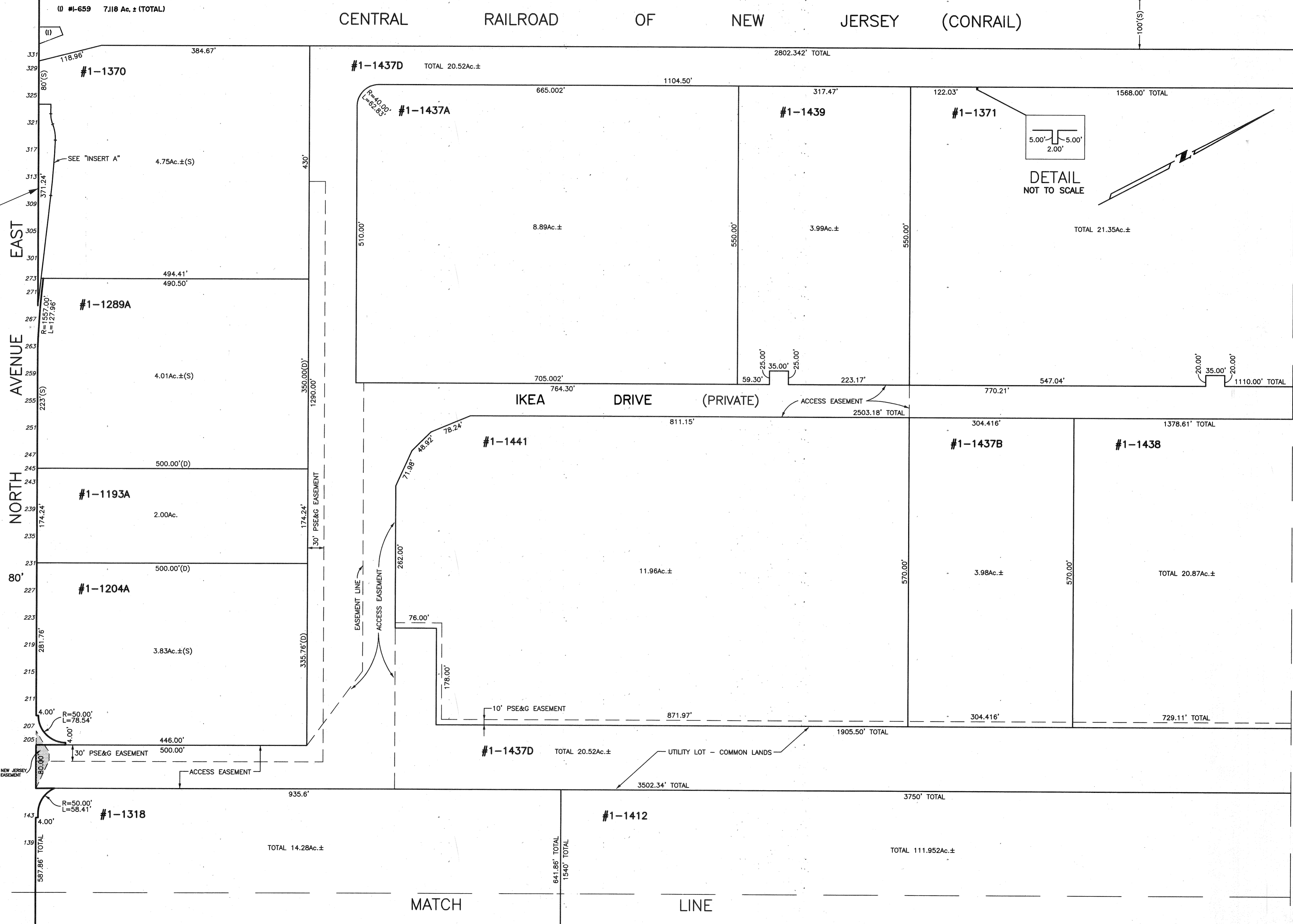
BOOK 13 SHEET 1

"INSERT A"
SCALE: 1"=50'

KAPKOWSKI ROAD

REV. 9-21-99

REV. 03/15/1999, BY S. RINALDI 6538944
SUBDIVISION TAX ACCOUNT NO. 1-1440, FILED MAP 803-A
AND 1995 TAKINGS FOR NORTH AVE. EAST ROADWAY WIDENING
TAX ACCOUNT NUMBERS 1-1289A AND 1-1204A
REVISIONS:



LINE

BOOK 13 SHEET 3

MATCH

BOOK 13 SHEET 7

SCALE: 1"=100'
BOOK 13. PAGE 2.