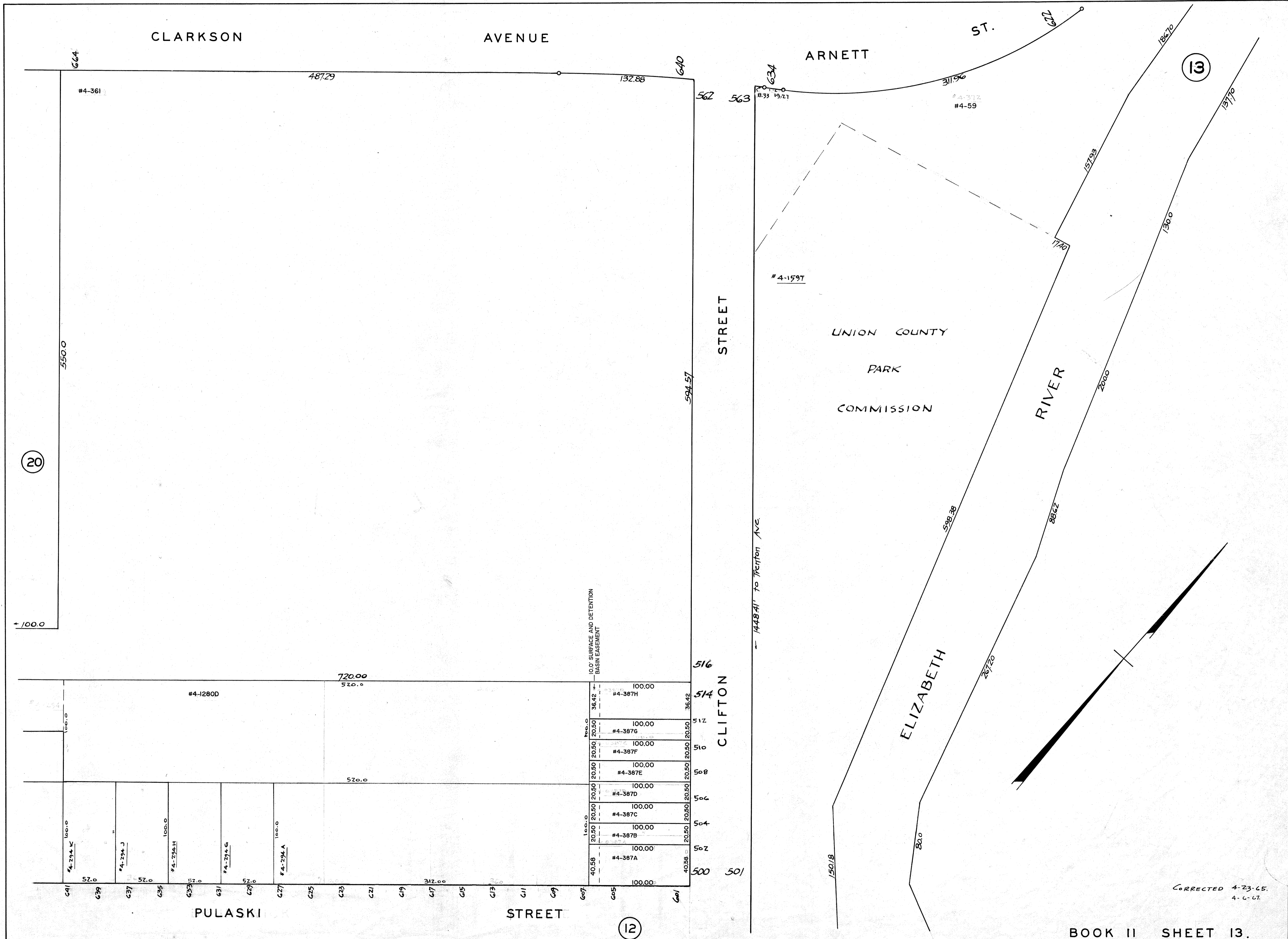


05-14-2001 500-514 CLIFTON STREET PER ENTERSE REV. BY S. RINALDI GS38944
 10-30-2002 540-654 CLARKSON AVE. TAX ACCT. 4-375 CHANGED BY ASSESSOR TO 4-361 REV. BY S. RINALDI GS38944
 10-30-2002 515-515 RICHMOND ST. REAR TAX ACCT. 4-294 COMBINED BY ASSESSOR INTO 4-1280D REV. BY S. RINALDI GS38944
 03-17-2004 622-634 ARNETT ST., TAX ACCT. 4-372 CORRECTED TO 4-59 BY ASSESSOR, REV. BY S. RINALDI GS38944



CORRECTED 4-23-05.
 4-6-07.