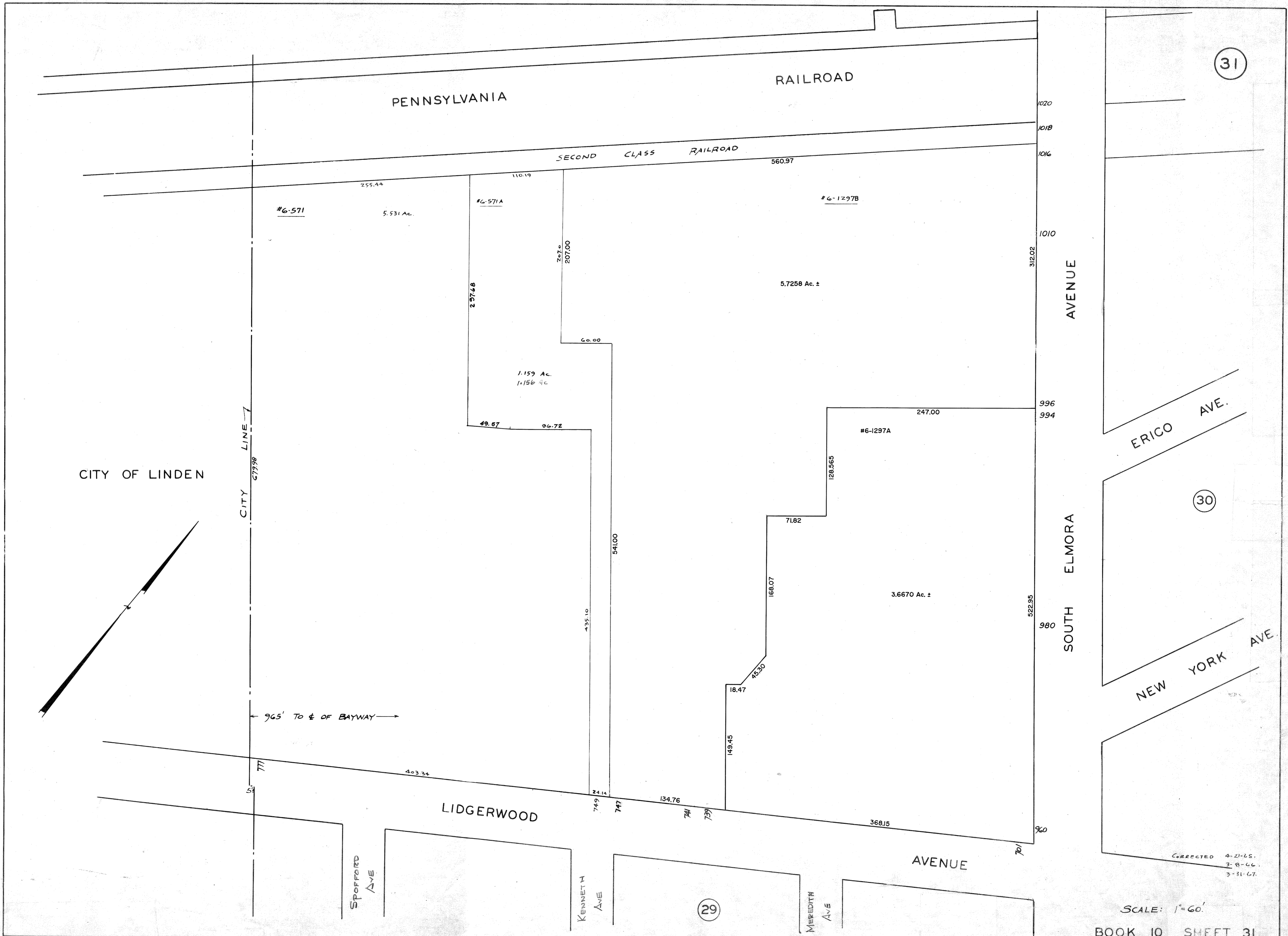


06-28-2000 70-747 LIDGERWOOD AVE. CONSOLIDATION BY DEED, REV. BY S. RINALDI 6538944
03-26-2004 960-1016 SOUTH ELMORA AVE., SUBDIVISION PER DEEDS 986 P60072, REV. BY S. RINALDI 6538944



SCALE: 1"=60'
BOOK 10. SHEET 31.